

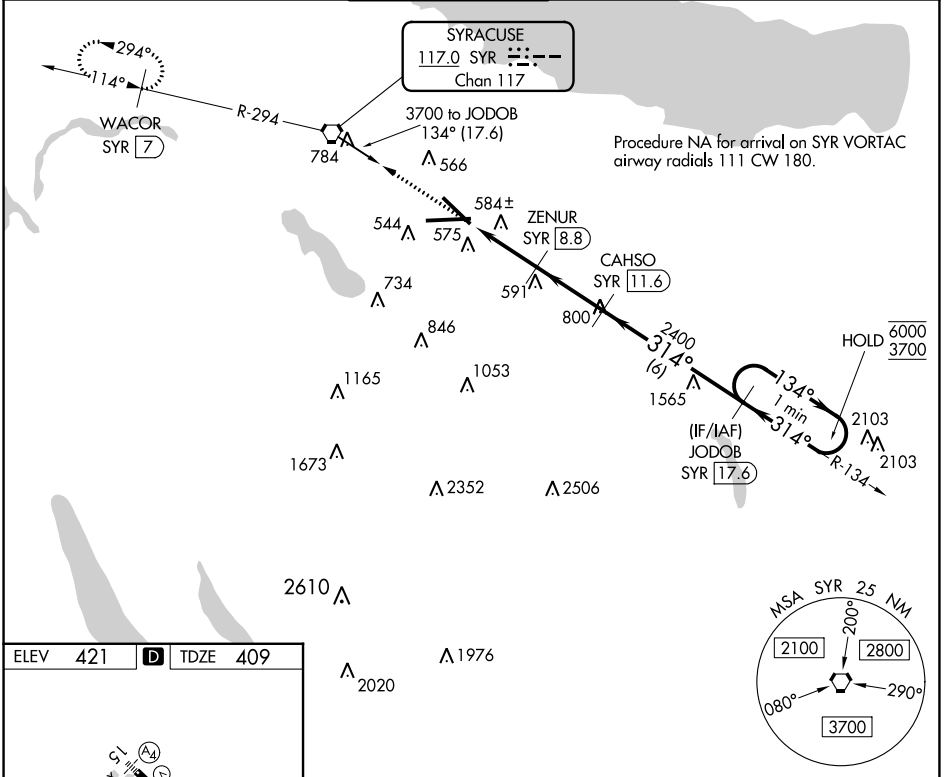
VORTAC SYR 117.0 Chan 117	APP CRS 314°	Rwy ldg TDZE Apt Elev	7500 409 421
---	------------------------	-----------------------------	---

TACAN RWY 33

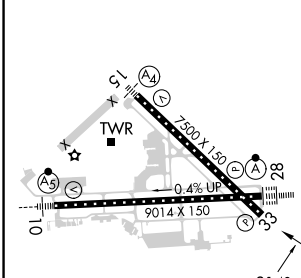
SYRACUSE HANCOCK INTL (SYR)

▼ Rwy 33 helicopter visibility reduction below 3/4 SM NA.
▲ MISSED APPROACH: Climb to 3000 direct SYR VORTAC and on SYR VORTAC R-294 to WACOR/7 DME and hold.

ATIS 124.225	SYRACUSE APP CON 126.125 269.125	SYRACUSE TOWER 120.3 239.0	GND CON 121.7 348.6	CLNC DEL 125.05 257.775
------------------------	--	--------------------------------------	-------------------------------	-----------------------------------



ELEV 421	D	TDZE 409
----------	----------	----------



TDZ/CL Rwy 28
HIRL Rws 10-28 and 15-33

SYR 7.1	SYR 5.9	ZENUR SYR 8.8	CAHSO SYR 11.6	JODOB SYR 17.6
1.2	1.7	2.8	6	

3000	SYR	SYR R-294	WACOR SYR 7	CAHSO SYR 11.6	JODOB SYR 17.6	One Minute Holding Pattern
						134° → 6000 ← 314° 3700
						2400
						1380
						TCH 53
						3.19°
						1.2 1.7 2.8 6
CATEGORY	A	B	C	D		
S-33	840/55	431 (500-1)	840-1¼	431 (500-1¼)		
C CIRCLING	900-1 479 (500-1)	920-1 499 (500-1)	1020-1½ 599 (600-1½)	1180-2½ 759 (800-2½)		

NE-2, 05 SEP 2024 to 03 OCT 2024

NE-2, 05 SEP 2024 to 03 OCT 2024