

FORT LEWIS, WASHINGTON

# RNAV (GPS) RWY 33

APCH CRS 331°  
Rwy Idg 6124  
TDZE 301  
Arprt Elev 301

AL-413 (USA)

GRAY AAF (JOINT BASE LEWIS MCCHORD) (KGRF)

RNP APCH

SSALR

MISSED APPROACH: Climb to 2000 direct CIKRI and hold.

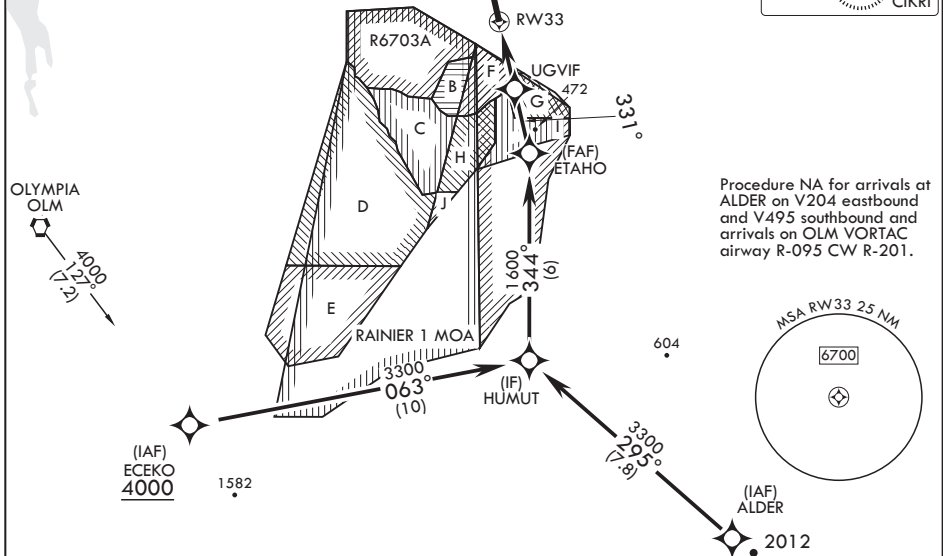
\* Circling not authorized W of Rwy 15-33.



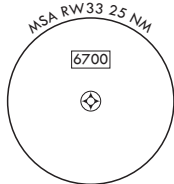
ATIS 124.65 306.2	SEATTLE APP CON/DEP CON 120.1 290.9	TOWER * 119.325 (CTAF) 256.8	GND CON 121.9 290.2	CLNC DEL 121.9 290.2	PAR
----------------------	--	---------------------------------	------------------------	-------------------------	-----

When local altimeter setting not received, use McChord Fld altimeter setting.

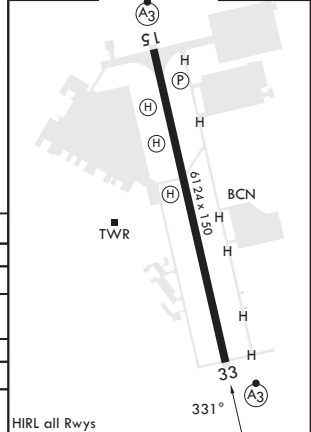
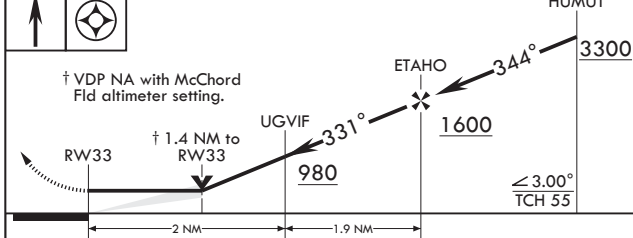
MISSED APPROACH



Procedure NA for arrivals at ALDER on V204 eastbound and V495 southbound and arrivals on OLM VORTAC airway R-095 CW R-201.



2000 CIKRI	ELEV 301	TDZE 301
------------	----------	----------



CATEGORY	A	B	C	D
LNAV MDA	800-½ 499	(500-½)	800-1 499	(500-1)
<b>C</b> CIRCLING*	840-1 539	(600-1)	840-1½ 539	920-2 619 (700-2)
MC CHORD FLD ALTIMETER SETTING MINIMUMS				
LNAV MDA	820-½ 519	(600-½)	820-1 519	(600-1)
<b>C</b> CIRCLING*	860-1 559	(600-1)	860-1½ 559	940-2 639 (700-2)

FORT LEWIS, WASHINGTON

47°05'N - 122°35'W GRAY AAF (JOINT BASE LEWIS MCCHORD) (KGRF)

Amdt 3 10AUG23

# RNAV (GPS) RWY 33

NW-1, 05 SEP 2024 to 03 OCT 2024

NW-1, 05 SEP 2024 to 03 OCT 2024