

TACOMA, WASHINGTON

ILS RWY 34 (CAT II)

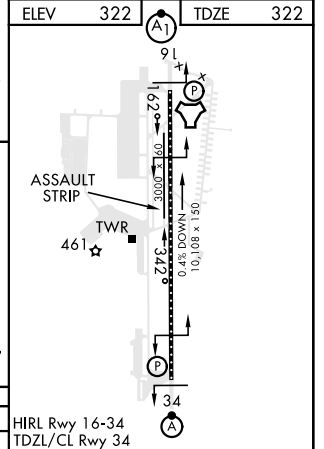
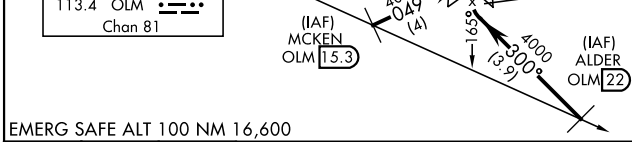
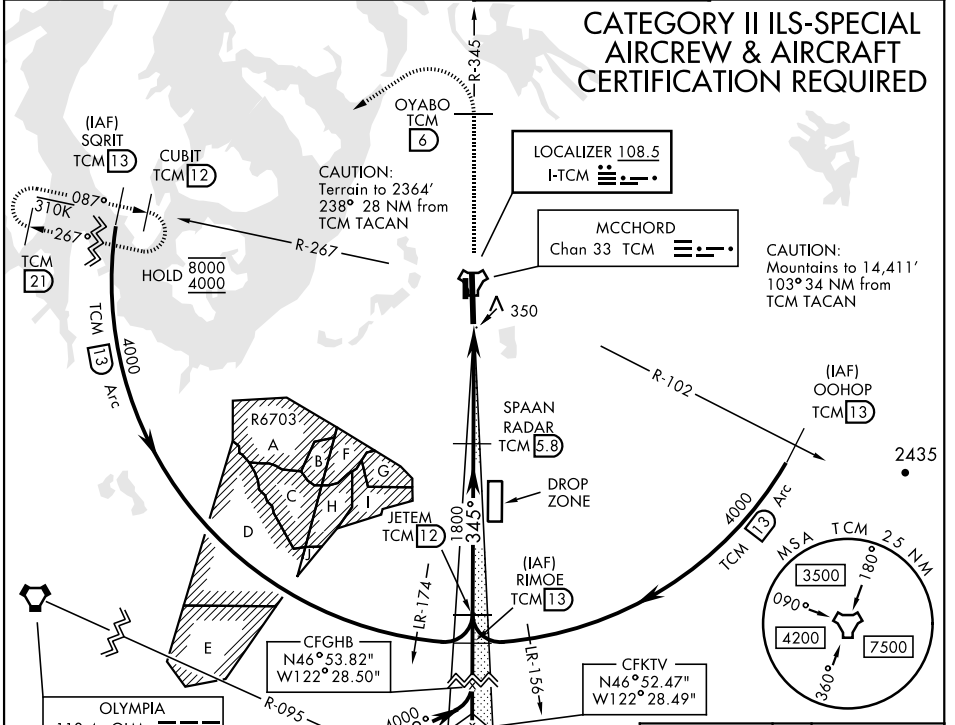
LOC I-TCM 108.5	APCH CRS 345°	Rwy Idg TDZE Arprt Elev 10,108 322 322
---------------------------	-------------------------	--

AL-414 [USAF]

MCCORD FLD (KTCM)

ALSF-2 MISSED APPROACH: Climb to 4000 on TCM TACAN R-345 to OYABO, then turn left via 215° course to intercept TCM R-267 to CUBIT and hold, continue climb in hold to 4000. Cross OYABO at or above 3000.

ATIS 135.825 270.1	SEATTLE APP CON 126.5 377.15	TOWER 124.8 259.3	GND CON 118.175 279.65
------------------------------	--	-----------------------------	----------------------------------



4000 TCM R-345	OYABO tr 215°	CUBIT TCM R-267	SPAAN RADAR 5.8	JETEM 12	RIMOE 13
----------------	---------------	-----------------	-----------------	----------	----------

CATEGORY	A	B	C	D	E
S-ILS 34	RA 139/12		100	DA 422	

TACOMA, WASHINGTON

47°08'N-122°29'W

MCCORD FLD (KTCM)

Amdt 4 10SEP20

ILS RWY 34 (CAT II)

NW-1, 05 SEP 2024 to 03 OCT 2024

NW-1, 05 SEP 2024 to 03 OCT 2024