

RNAV (GPS) RWY 34

APCH CRS	Rwy ldg	10,108
345°	TDZE	322
	Arprt Elev	322

AL-414 [USAF]

MCCHORD FLD (KTCM)

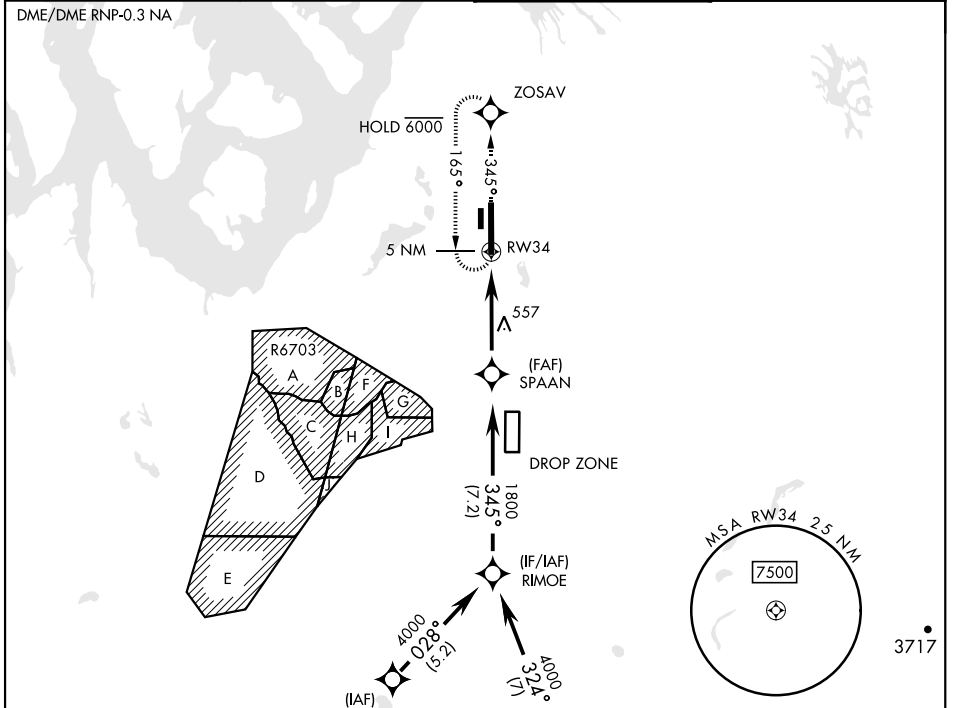
RADAR required.

▼ * When ALS inop, increase CAT AB RVR to 55, vis to 1 mile; CAT CDE vis to 1½ miles.
 ** Circling not authorized E of rwy 16-34.

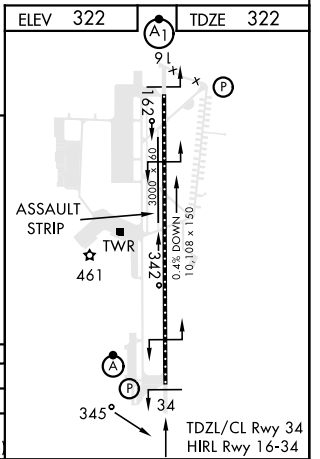
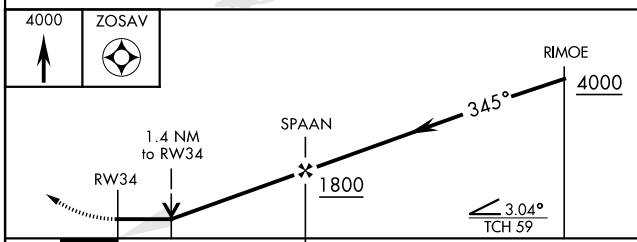


MISSED APPROACH: Climb to 4000 direct ZOSAV and hold, continue climb in hold to 4000.

ATIS 135.825 270.1	SEATTLE APP CON 126.5 377.15	TOWER 124.8 259.3	GND CON 118.175 279.65
------------------------------	--	-----------------------------	----------------------------------



EMERG SAFE ALT 100 NM 16,600



CATEGORY	A	B	C	D	E
LNVA MDA *	820/24	498 (500-½)	820/50	498 (500-1)	
** CIRCLING	940-1	618 (700-1)	940-1 ¼ 618 (700-1 ¼)	940-2 618 (700-2)	1020-2 ½ 698 (700-2 ½)

RNAV (GPS) RWY 34

NW-1, 05 SEP 2024 to 03 OCT 2024

NW-1, 05 SEP 2024 to 03 OCT 2024