

# TACAN RWY 16

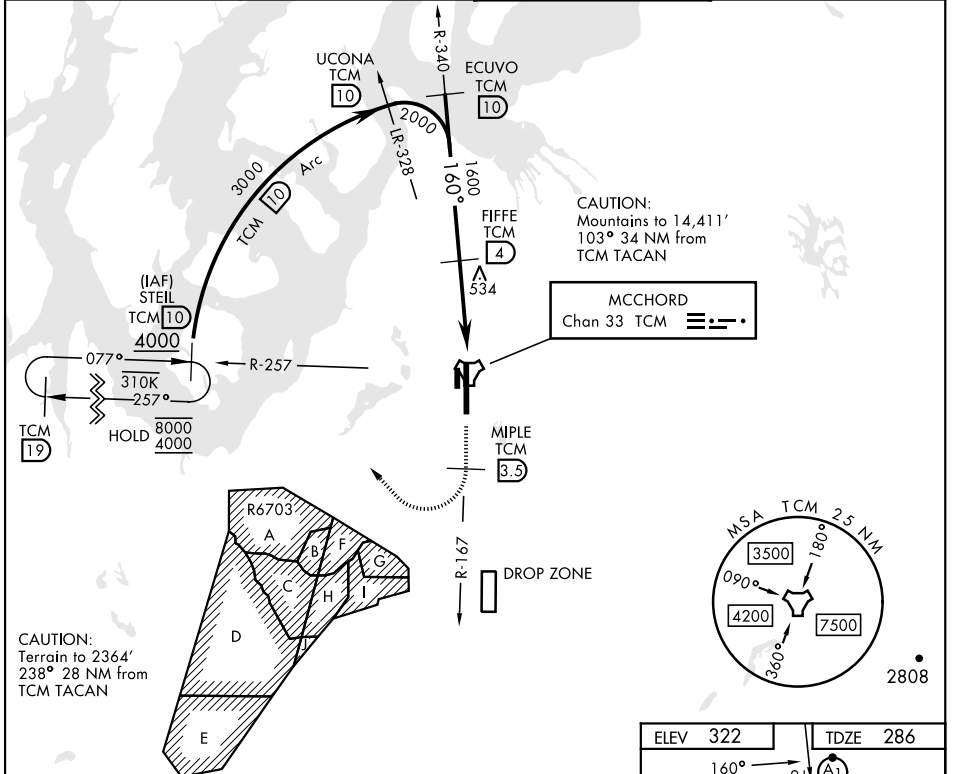
TACAN TCM Chan <b>33</b>	APCH CRS <b>160°</b>	Rwy Idg <b>10,108</b> TDZE <b>286</b> Arpt Elev <b>322</b>
-----------------------------	-------------------------	--

AL-414 [USAF]

MCCHORD FLD (KTCM)

<p>▼ * When ALS inop, increase CAT AB RVR to 55, vis to 1 mile, CAT CDE vis to 1 3/8 miles. ** Circling not authorized E of Rwy 16-34.</p>	<p>ALSF-1 A1</p>	<p>MISSED APPROACH: Climb to 4000 on TCM TACAN R-167. At TCM 3.5 DME turn right via 295° course to intercept TCM R-257 to STEIL and hold, continue climb-in-hold to 4000.</p>
--	----------------------	---

<p>ATIS <b>135.825 270.1</b></p>	<p>SEATTLE APP CON <b>126.5 377.15</b></p>	<p>TOWER <b>124.8 259.3</b></p>	<p>GND CON <b>118.175 279.65</b></p>
--------------------------------------	--	-------------------------------------	--

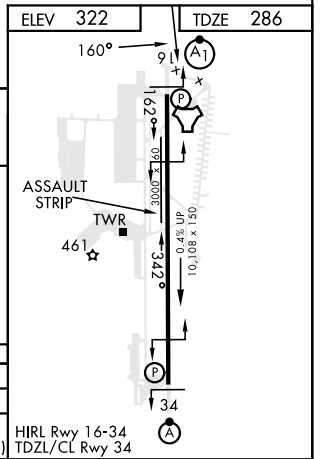
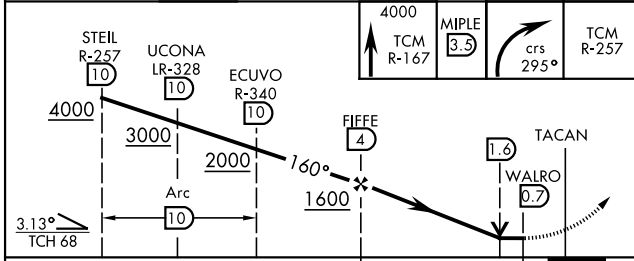


CAUTION: Terrain to 2364' 238° 28 NM from TCM TACAN

CAUTION: Mountains to 14,411' 103° 34 NM from TCM TACAN

MCCHORD  
Chan 33 TCM

EMERG SAFE ALT 100 NM 16,600



CATEGORY	A	B	C	D	E
S-16 *	800/24	514 (500-1/2)	800/55	514	(500-1)
CIRCLING **	940-1 618 (700-1)	940-1 3/4 618 (700-1 3/4)	940-2 618 (700-2)	1020-2 1/2 698 (700-2 1/2)	

# TACAN RWY 16

NW-1, 05 SEP 2024 to 03 OCT 2024

NW-1, 05 SEP 2024 to 03 OCT 2024