

LOC I-TRI 109.9	APP CRS 230°	Rwy Idg 8000	TDZE 1518
		Apt Elev 1519	

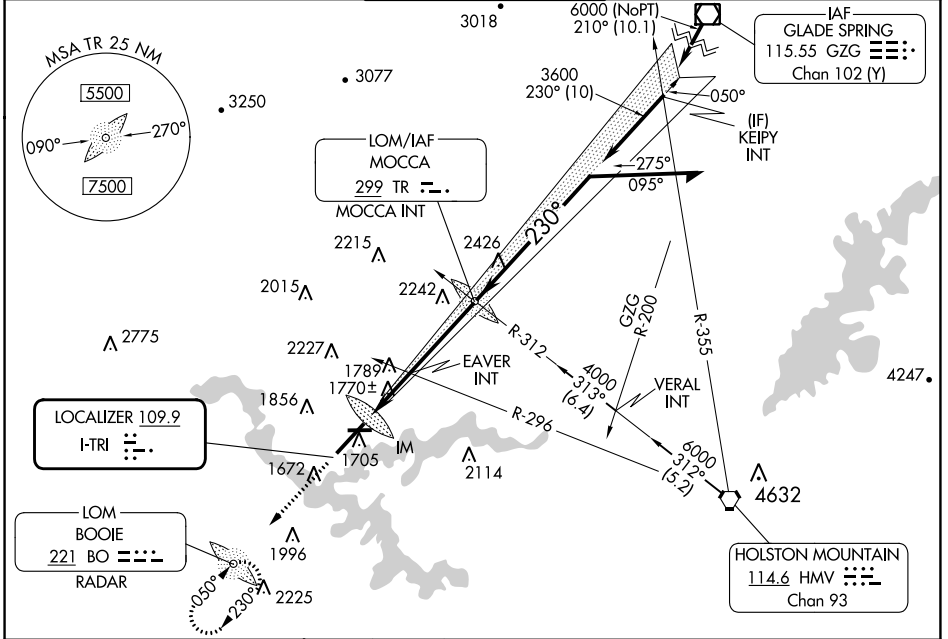
ILS or LOC RWY 23 TRI-CITIES (TRI)

ADF or RADAR required.

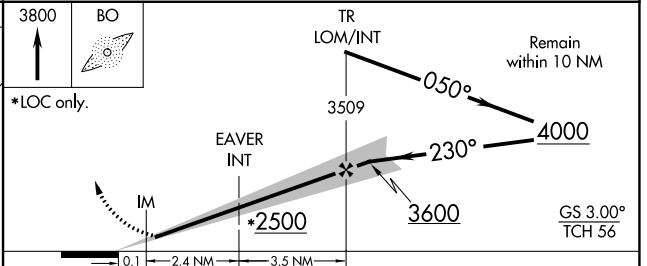
⚠ Circling to Rwy 9 NA at night. Circling NA northwest of Rws 9 and 23. CAUTION: Air traffic control tower 1634 feet MSL located 940 feet right of runway centerline 357 feet from runway threshold. When control tower closed: S-ILS 23 increase visibilities to RVR 4000 all Cats and S-LOC 23 increase visibilities 1/2 SM all Cats.

ALSIF-2 **(A)** MISSED APPROACH: Climb to 3800 direct BOOIE LOM/RADAR and hold.

ATIS 118.25	TRI-CITY APP CON ★ 134.425 349.0	TRI-CITY TOWER ★ 119.5 (CTAF) 257.8	GND CON 121.7 348.6	UNICOM 122.95
-----------------------	--	---	-------------------------------	-------------------------



ELEV 1519	D TDZE 1518
-----------	--------------------



CATEGORY	A	B	C	D
S-ILS 23	1718/18 200 (200-1/2)			
S-LOC 23	2500/40 982 (1000-3/4)	2500-1 982 (1000-1)	2500-2 1/2 982 (1000-2 1/2)	982 (1000-2 1/2)
C CIRCLING	2500-1 1/4 981 (1000-1 1/4)	2500-1 1/2 981 (1000-1 1/2)	2500-3 981 (1000-3)	
EAVER FIX MINIMUMS (DUAL VOR RECEIVERS REQUIRED)				
S-LOC 23	2020/24 502 (600-1/2)	2020/55 502 (600-1)		
C CIRCLING	2120-1 601 (700-1)	2180-1 661 (700-1)	2320-2 1/4 801 (900-2 1/4)	2500-3 981 (1000-3)

SE-1, 05 SEP 2024 to 03 OCT 2024

SE-1, 05 SEP 2024 to 03 OCT 2024