

HI-ILS or LOC Z RWY 12

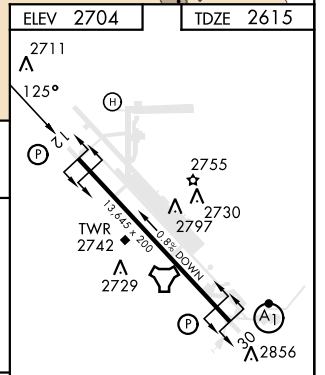
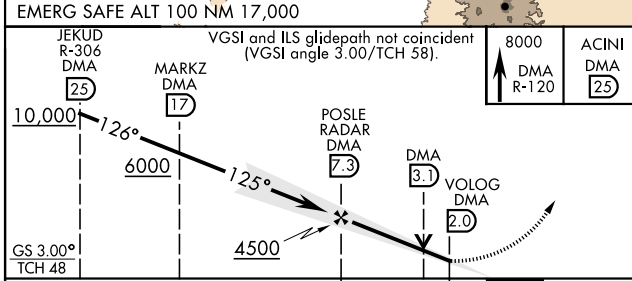
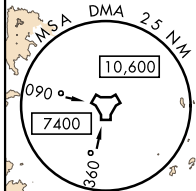
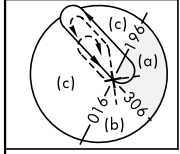
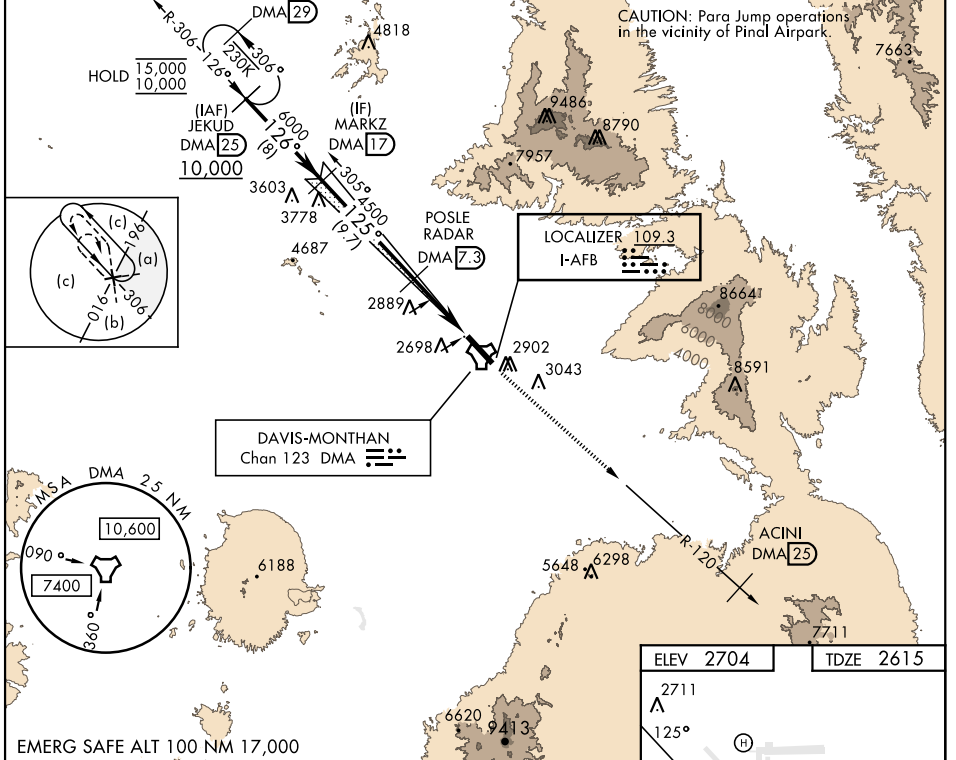
LOC I-AFB 109.3	APCH CRS 125°	Rwy Idg 13,645 TDZE 2615 Arpt Elev 2704
---------------------------	-------------------------	--

AL-429 [USAF]

DAVIS-MONTHAN AFB (KDMA)

DME or RADAR required.	MISSED APPROACH: Climbing to 8000 intercept DMA TACAN R-120 to ACINI. Expect RADAR vectors.
------------------------	---

ATIS* 270.1	TUCSON APP CON 066°-274° 119.4 318.1 275°-065° 125.1 269.55	TOWER 118.85 253.5	GND CON 121.8 275.8	CLNC DEL 121.8 275.8
-----------------------	---	------------------------------	-------------------------------	--------------------------------



CATEGORY	C	D	E	ELEV 2704	TDZE 2615
S-ILS 12		281.5/40 200 (200-¾)			
S-LOC 12		316.0-1½ 545 (500-1½)			
CIRCLING*	3280-1⅞ 576 (600-1⅞)	3420-2¼ 716 (800-2¼)	3460-2¾ 756 (800-2¾)		

TUCSON, ARIZONA 32°10'N-110°53'W DAVIS-MONTHAN AFB (KDMA)

Amtd 2 10AUG23

HI-ILS or LOC Z RWY 12

SW-4, 05 SEP 2024 to 03 OCT 2024

SW-4, 05 SEP 2024 to 03 OCT 2024

FAF to MAP 5.3 NM					
Knots	120	140	160	180	200
Min:Sec	2:39	2:16	1:59	1:46	1:35