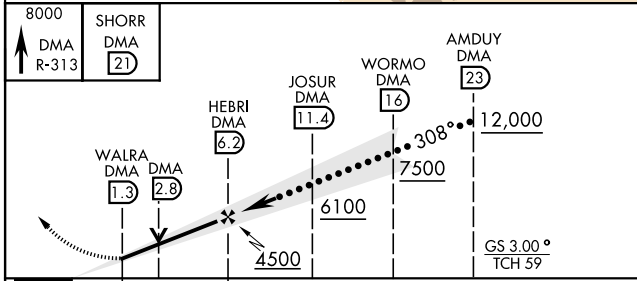
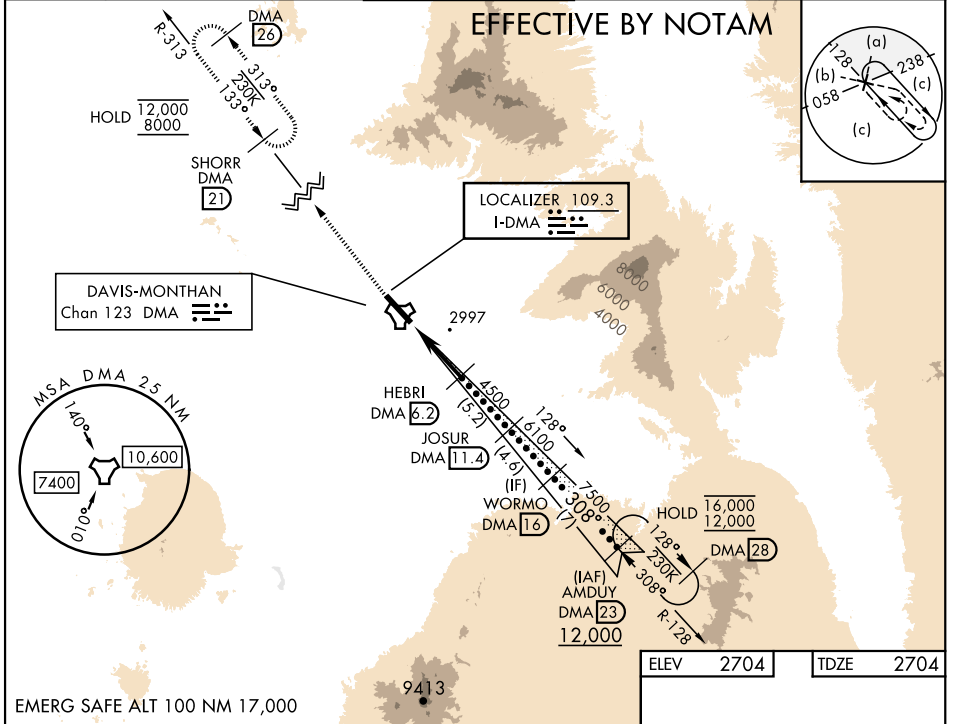


HI-ILS or LOC Z RWY 31

LOC I-DMA 109.3	APCH CRS 308°	Rwy ldg 13,645 TDZE 2704 Arprt Elev 2704	[USAF]	DAVIS-MONTHAN AFB (KDMA)
---------------------------	-------------------------	---	--------	--------------------------

DME or RADAR required.		ALSF-1 	MISSED APPROACH: Climb to 8000, intercept DMA TACAN R-313 to SHORR and hold, continue climb-in-hold to 8000.
* When ALS inop, increase RVR to 40, vis to 3/4 mile. ** When ALS inop, increase vis to 2 miles. *** Circling not authorized SW of Rwy 13-31.			

ATIS ★ 270.1	TUCSON APP CON 066°-274° 119.4 318.1 275°-065° 125.1 269.55	TOWER 118.85 253.5	GND CON 121.8 275.8	CLNC DEL 121.8 275.8
------------------------	---	------------------------------	-------------------------------	--------------------------------



CATEGORY	C	D	E
S-ILS 31 *	2904/24	200	(200-1/2)
S-LOC 31 **	3400-1 1/2	696	(700-1 1/2)
CIRCLING ***	3400-2 696 (700-2)	3420-2 1/4 716 (800-2 1/4)	3460-2 3/4 756 (800-2 3/4)

ELEV	2704	TDZE	2704		
REIL Rwy 13 HIREL Rwy 13-31					
FAF to MAP 4.9 NM					
Knots	120	140	160	180	200
Min:Sec	2:27	2:06	1:50	1:38	1:28

HI-ILS or LOC Z RWY 31

SW-4, 05 SEP 2024 to 03 OCT 2024

SW-4, 05 SEP 2024 to 03 OCT 2024