

HI-TACAN Z RWY 13

TACAN DMA Chan 123	APCH CRS 133°	Rwy Idg 13,645 TDZE 2615 Arprt Elev 2704
------------------------------	-------------------------	---

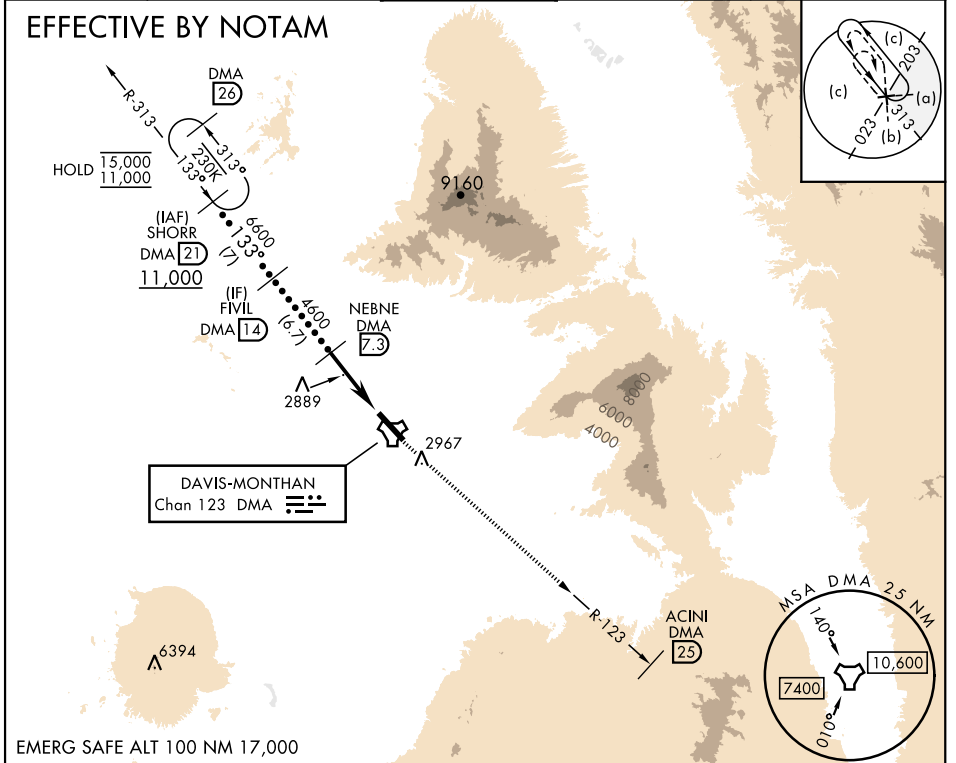
[USAF]

DAVIS-MONTHAN AFB (KDMA)

RADAR required *Circling not authorized SW of Rwy 13-31.	MISSED APPROACH: Climbing to 8000 intercept DMA TACAN R-123 to ACINI. Expect RADAR vectors.
---	---

ATIS* 270.1	TUCSON APP CON 125.1 269.55 (090°- 285°) 119.4 318.1 (286°- 089°)	TOWER 118.85 253.5	GND CON 121.8 275.8	CLNC DEL 121.8 275.8
-----------------------	---	------------------------------	-------------------------------	--------------------------------

EFFECTIVE BY NOTAM



SW-4, 05 SEP 2024 to 03 OCT 2024

SW-4, 05 SEP 2024 to 03 OCT 2024

EMERG SAFE ALT 100 NM 17,000

	SHORR DMA 2	FIVIL DMA 14	NEBNE DMA 7.3	ESALE DMA 2	DMA TACAN	ACINI DMA 25	ACINI DMA 25
	11,000	6600	4600	3160	2704	7400	2615
		133°	3.17°	5.3 NM	0.5 NM		
CATEGORY	C	D	E				
S-13	3160-1%	545	(500-1%)				
CIRCLING*	3280-1% 576 (600-1%)	3420-2¼ 716 (800-2¼)	3460-2¾ 756 (800-2¾)				
				HIRL Rwy 13-31 REIL Rwy 13			

HI-TACAN Z RWY 13