

TUCSON, ARIZONA

# ILS or LOC Y RWY 31

LOC I-DMA <b>109.3</b>	APCH CRS <b>308°</b>	Rwy Idg <b>13,645</b> TDZE <b>2704</b> Arprt Elev <b>2704</b>
---------------------------	-------------------------	---

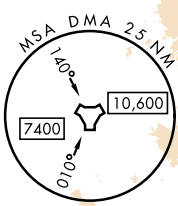
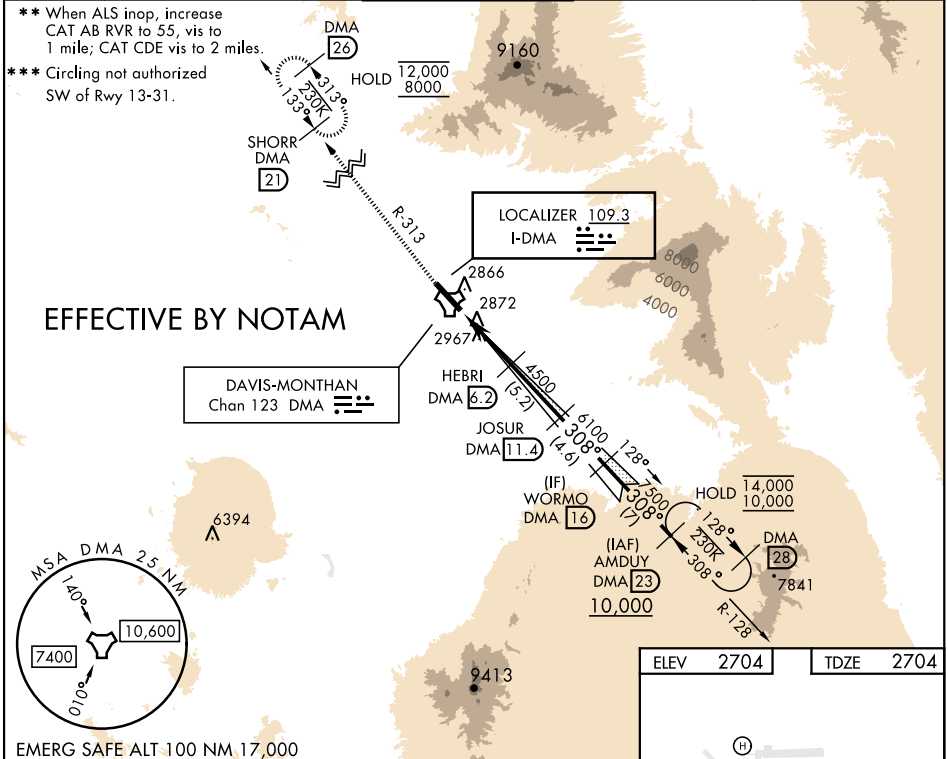
[USAF]

DAVIS-MONTHAN AFB (KDMA)

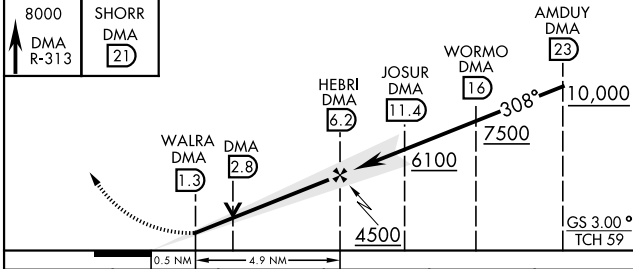
DME or RADAR required		ALSF-1 <b>(A1)</b>	MISSED APPROACH: Climb to 8000, intercept DMA TACAN R-313 to SHORR and hold, continue climb-in-hold to 8000.
-----------------------	--	-----------------------	--

ATIS* <b>270.1</b>	TUCSON APP CON 066°-274° <b>119.4 318.1</b> 275°-065° <b>125.1 269.55</b>	TOWER <b>118.85 253.5</b>	GND CON <b>121.8 275.8</b>	CLNC DEL <b>121.8 275.8</b>
-----------------------	---	------------------------------	-------------------------------	--------------------------------

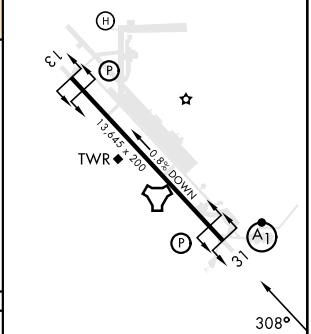
\*\* When ALS inop, increase CAT AB RVR to 55, vis to 1 mile; CAT CDE vis to 2 miles.  
\*\*\* Circling not authorized SW of Rwy 13-31.



EMERG SAFE ALT 100 NM, 17,000



ELEV 2704	TDZE 2704
-----------	-----------



CATEGORY	A	B	C	D	E
S-ILS 31*	2904/24 200 (200-½)				
S-LOC 31**	3400/24 696 (700-½)	3400-1½ 696 (700-1½)			
CIRCLING***	3400-1 696 (700-1)	3400-2 696 (700-2)	3420-2¼ 716 (800-2¼)	3460-2¾ 756(800-2¾)	

HIRL Rwy 13-31	FAF to MAP 4.9 NM				
REIL Rwy 13					
Knots	60	90	120	150	180
Min:Sec	4:54	3:16	2:27	1:58	1:38

TUCSON, ARIZONA  
Orig 05SEP24

32°10'N-110°53'W

DAVIS-MONTHAN AFB (KDMA)

# ILS or LOC Y RWY 31

SW-4, 05 SEP 2024 to 03 OCT 2024

SW-4, 05 SEP 2024 to 03 OCT 2024