

TUCSON, ARIZONA

RNAV (GPS) RWY 13

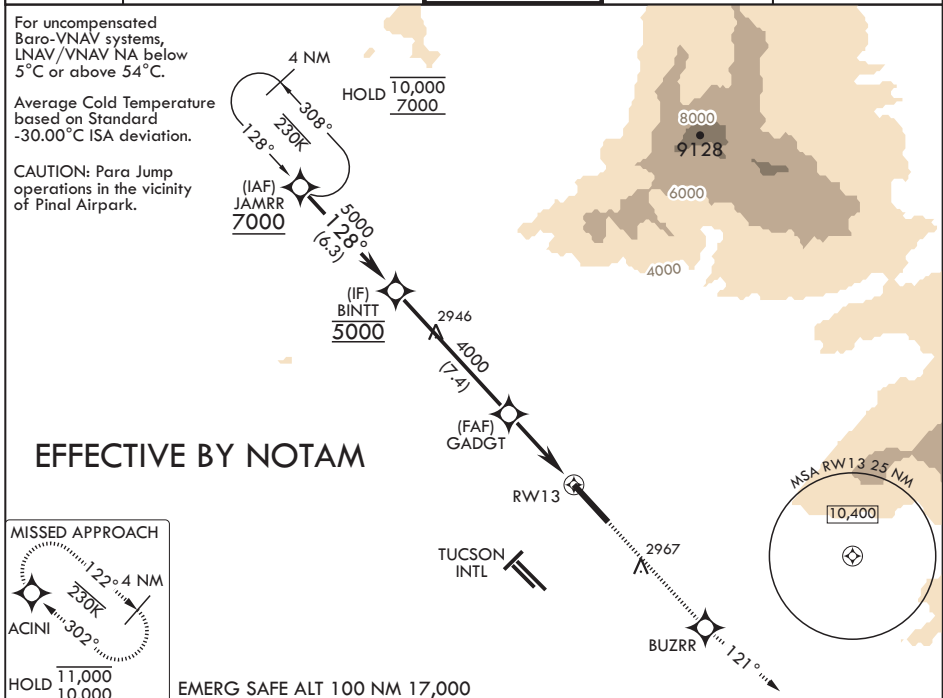
WAAS CH 66933 W13A	APCH CRS 128°	Rwy ldg TDZE 13,645 2615	Arpt Elev 2704
---------------------------------	-------------------------	---------------------------------------	--------------------------

-(USAF)

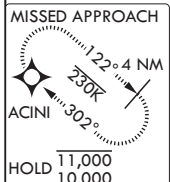
DAVIS MONTHAN AFB (KDMA)

RNP APCH	MISSED APPROACH: Climb to 10,000 direct BUZZR, track 121° to ACINI and hold, continue climb-in-hold to 10,000.
RADAR required	
* Circling not authorized SW of RWY 13-31.	

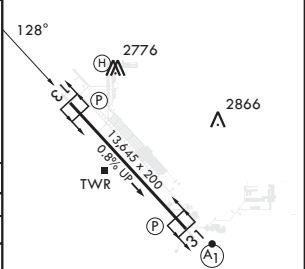
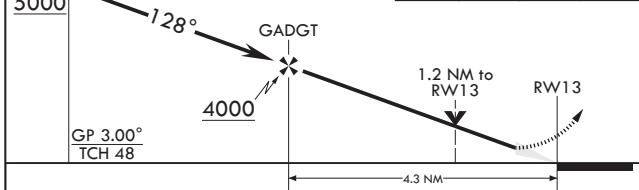
ATIS* 270.1	TUCSON APP CON/DEP CON 119.4 269.55	TOWER 118.85 253.5	GND CON 121.8 275.8	CLNC DEL 121.8 275.8
-----------------------	---	------------------------------	-------------------------------	--------------------------------



EFFECTIVE BY NOTAM



BINTT	VGSI and RNAV glidepath not coincident (VGSI Angle 3.00/TCH 58).	10,000	BUZZR	tr 121°	ACINI	ELEV 2704	TDZE 2615
-------	--	--------	-------	---------	-------	-----------	-----------



CATEGORY	A	B	C	D	E
LPV DA	2815/40		200	(200-¾)	
LNAV/VNAV DA	2892/45 277 (200-¾)	2903/45 288 (200-¾)	2911/45 296 (300-¾)	2922/45 307 (300-¾)	2973/55 358 (300-1)
LNAV MDA	3020/55	405 (400-1)	3020/60	405	(400-1¼)
C CIRCLING*	3200-1 496 (500-1)	3220-1 516 (600-1)	3280-1½ 576 (600-1½)	3420-2¼ 716 (800-2¼)	3460-2¾ 756 (800-2¾)

HIRL all Rwys
REIL Rwy 13

TUCSON, ARIZONA
Orig 05SEP24

32°10'N - 110°53'W

DAVIS MONTHAN AFB (KDMA)

RNAV (GPS) RWY 13

SW-4, 05 SEP 2024 to 03 OCT 2024

SW-4, 05 SEP 2024 to 03 OCT 2024