

TACAN Y RWY 13

DAVIS-MONTHAN AFB (KDMA)

TACAN DMA Chan 123	APCH CRS 133°	Rwy Ildg 13,645 TDZE 2615 Arprt Elev 2704
------------------------------	-------------------------	--

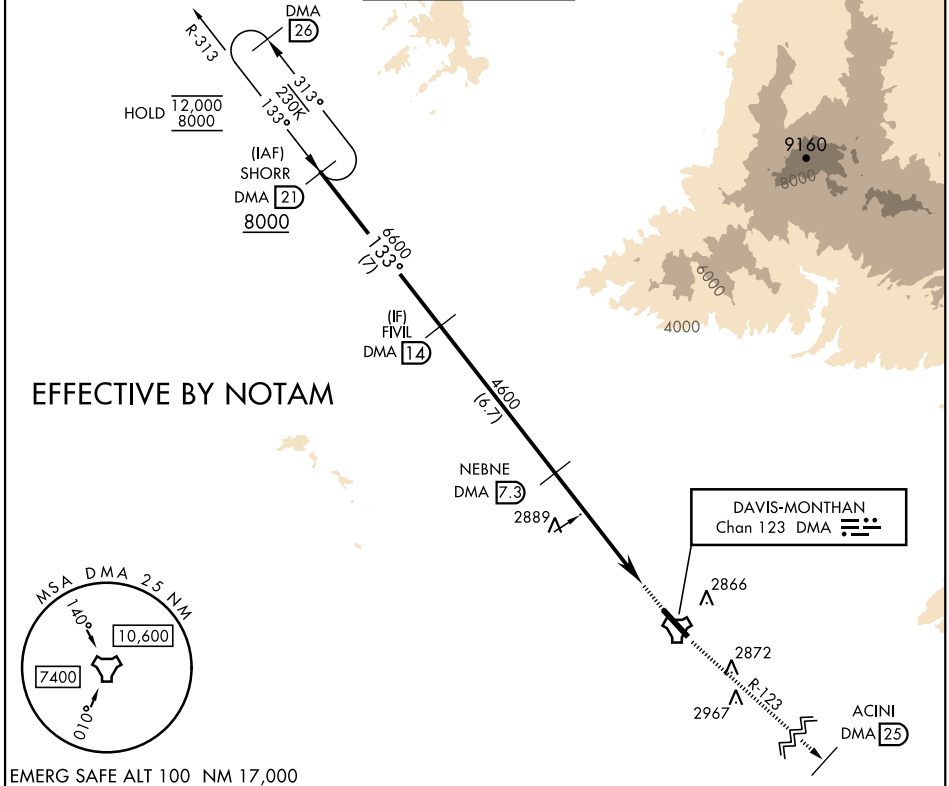
[USAF]

RADAR required

* Circling not authorized SW of Rwy 13-31.

MISSED APPROACH: Climb to 8000 intercept DMA TACAN R-123 to ACINI. Expect RADAR vectors.

ATIS ★ 270.1	TUCSON APP CON 090°-285° 125.1 269.55 286°-089° 119.4 318.1	TOWER 118.85 253.5	GND CON 121.8 275.8	CLNC DEL 121.8 275.8
------------------------	---	------------------------------	-------------------------------	--------------------------------



SHORR DMA 21	FIVIL DMA 14	NEBNE DMA 7.3	ESALE DMA 2	DMA TACAN	ELEV 2704	TDZE 2615
8000	6600	4600	3.17°			
TCH 58						
-5.3 NM					0.5 NM	
CATEGORY	A	B	C	D	E	
S-13	3160/55 545 (500-1)		3160-1%	545	(500-1%)	
CIRCLING*	3200-1 496 (500-1)	3220-1 516 (600-1)	3280-1% 576 (600-1%)	3420-2¼ 716 (800-2¼)	3460-2¾ 756 (800-2¾)	HIREL Rwy 13-31 REIL Rwy 13

TUCSON, ARIZONA 32°10'N-110°53'W DAVIS-MONTHAN AFB (KDMA)

Orig 05SEP24

TACAN Y RWY 13

SW-4, 05 SEP 2024 to 03 OCT 2024

SW-4, 05 SEP 2024 to 03 OCT 2024