

LOC/DME I-TUS 111.7 Chan 54	APP CRS 126°	Rwy Idg 10996 TDZE 2599 Apt Elev 2643
---	------------------------	--

ILS or LOC RWY 12

TUCSON INTL (TUS)

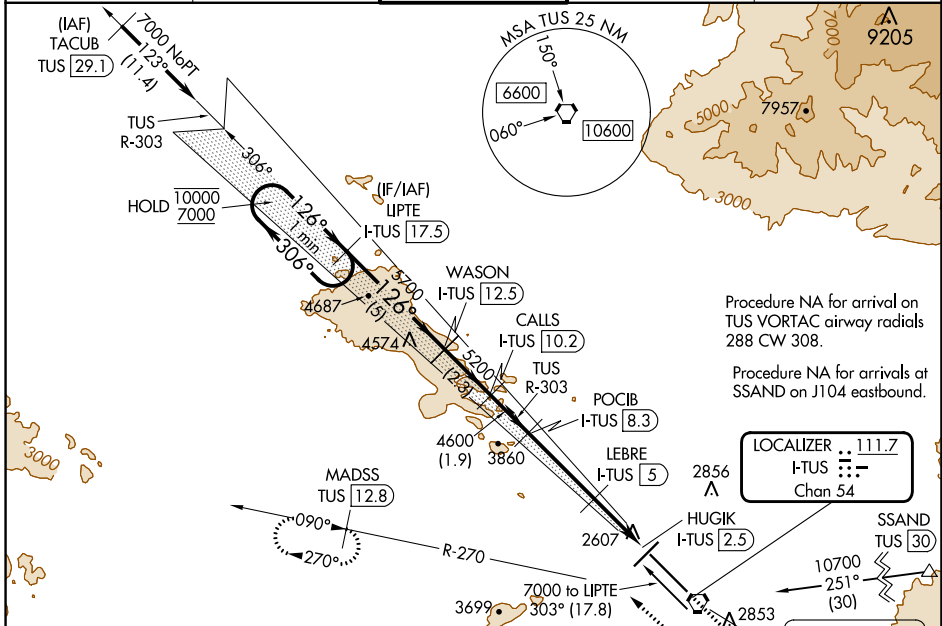
RADAR or DME required. RADAR required for procedure entry at TACUB.



MISSED APPROACH: Climb to 4000 then climbing right turn to 6000 on heading 300° and on TUS VORTAC R-270 to MADSS/TUS 12.8 DME and hold, continue climb in-hold to 6000.

For inop ALS, increase S-ILS 12 Cat E visibility to RVR 4000, S-LOC 12 Cat E visibility to 2 1/2 SM; LEBRE fix minimums: S-LOC 12 Cat C/D/E visibility to RVR 5500.
*RVR 1800 authorized with use of FD or AP or HUD to DA.

ATIS 123.8 279.65	TUCSON APP CON 119.4 318.1	TUCSON TOWER 118.3 257.8	GND CON 120.025 348.6	CLNC DEL 126.65 326.2
-----------------------------	--------------------------------------	------------------------------------	---------------------------------	---------------------------------



Procedure NA for arrival on TUS VORTAC airway radials 288 CW 308.

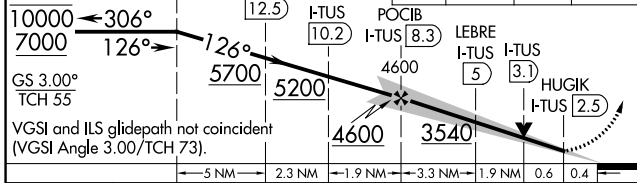
Procedure NA for arrivals at SSAND on J104 eastbound.

LOCALIZER 111.7
I-TUS
Chan 54

TUCSON 116.0 TUS
Chan 107

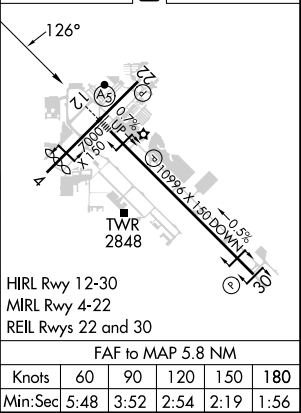
Use I-TUS DME when on the localizer course.

One Minute Holding Pattern	LIPT E I-TUS [17.5]	WASON I-TUS [12.5]	CALLS I-TUS [10.2]	POCIB I-TUS [8.3]	LEBRE I-TUS [5]	HUGIK I-TUS [2.5]	TUS R-270	MADSS TUS [12.8]
----------------------------	---------------------	--------------------	--------------------	-------------------	-----------------	-------------------	-----------	------------------



CATEGORY	A	B	C	D	E
S-ILS 12*	2799/24		200 (200-1/2)		
S-LOC 12	3540/40	941 (1000-3/4)	3540-2 941 (1000-2)		
CIRCLING	3540-1 1/4	897 (900-1 1/4)	3540-2 3/4 897 (900-2 3/4)	3640-3 997 (1000-3)	3900-3 1257 (1300-3)
LEBRE FIX MINIMUMS					
S-LOC 12	2960/24	361 (400-1/2)	2960/35	361 (400-3/4)	
CIRCLING	3160-1 517 (600-1)	3220-1 577 (600-1)	3220-1 1/2 577 (600-1 1/2)	3640-3 997 (1000-3)	3900-3 1257 (1300-3)

ELEV 2643	TDZE 2599
-----------	-----------



SW-4, 05 SEP 2024 to 03 OCT 2024

SW-4, 05 SEP 2024 to 03 OCT 2024

HRL Rwy 12-30					
MRL Rwy 4-22					
REIL Rws 22 and 30					
FAF to MAP 5.8 NM					
Knots	60	90	120	150	180
Min:Sec	5:48	3:52	2:54	2:19	1:56