

# TUCSON NINE DEPARTURE

AL-430 (FAA)

TUCSON INTL (TUS)  
TUCSON, ARIZONA

TUCSON DEP CON  
125.1 269.55  
ATIS  
123.8 279.65  
CLNC DEL  
126.65 326.2  
GND CON  
120.025 348.6  
TUCSON TOWER  
118.3 257.8

**TOP ALTITUDE:  
17000**

DME required.

PHOENIX  
115.6 PXR  
Chan 103

BUCKEYE  
110.6 BXX  
Chan 43

STANFIELD  
114.8 TFD  
Chan 95

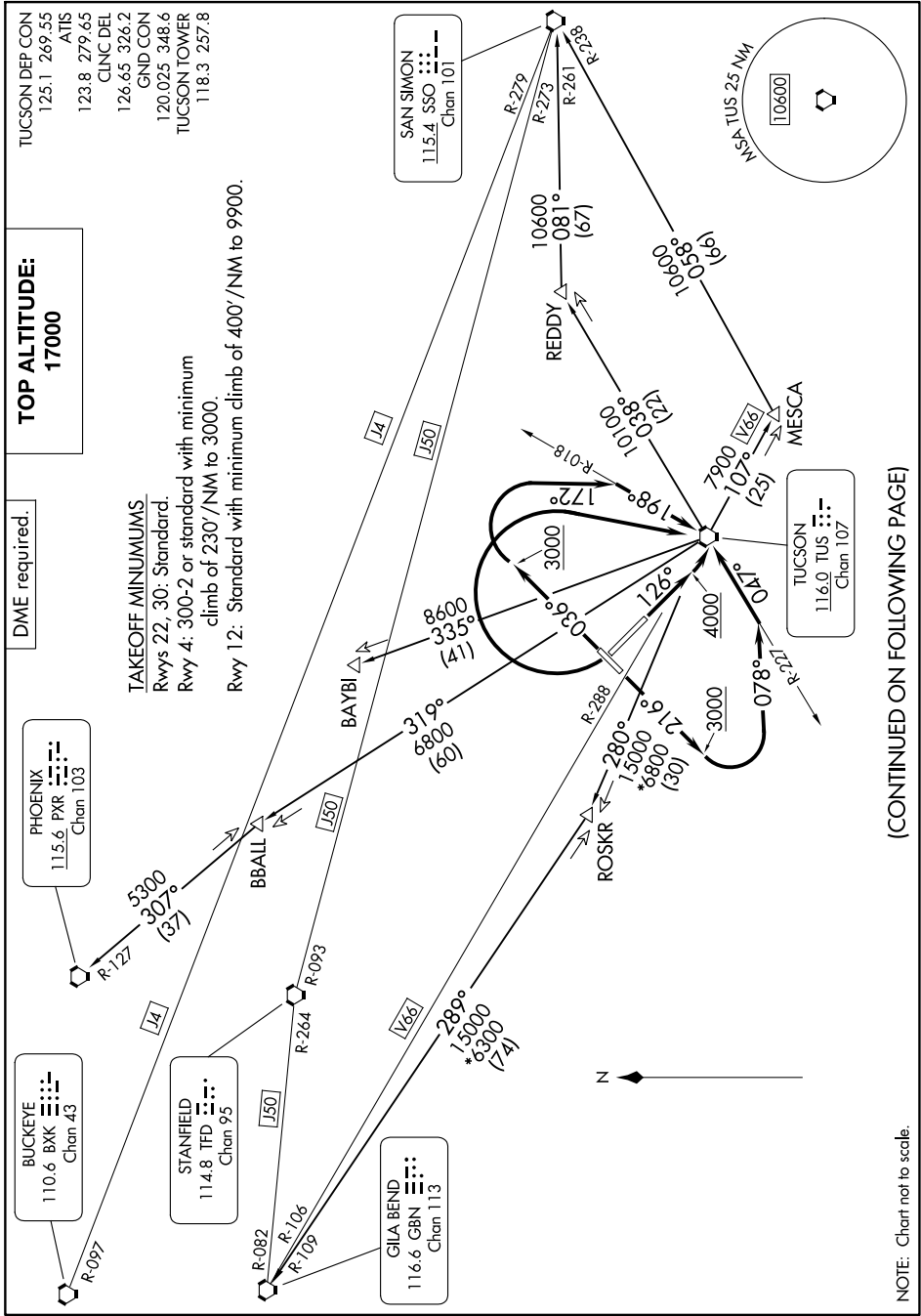
GILA BEND  
116.6 GBN  
Chan 113

SAN SIMON  
115.4 SSO  
Chan 101

TUCSON  
116.0 TUS  
Chan 107

**TAKEOFF MINIMUMS**  
Rwys 22, 30: Standard.  
Rwy 4: 300-2 or standard with minimum  
climb of 230'/NM to 3000.  
Rwy 12: Standard with minimum climb of 400'/NM to 9900.

SW-4, 05 SEP 2024 to 03 OCT 2024



(CONTINUED ON FOLLOWING PAGE)

NOTE: Chart not to scale.

SW-4, 05 SEP 2024 to 03 OCT 2024

# TUCSON NINE DEPARTURE

TUCSON, ARIZONA  
TUCSON INTL (TUS)