

VORTAC TCC <b>113.6</b> Chan <b>83</b>	APP CRS <b>201°</b>	Rwy Idg TDZE Apt Elev <b>7104</b> <b>4047</b> <b>4065</b>
--	------------------------	--

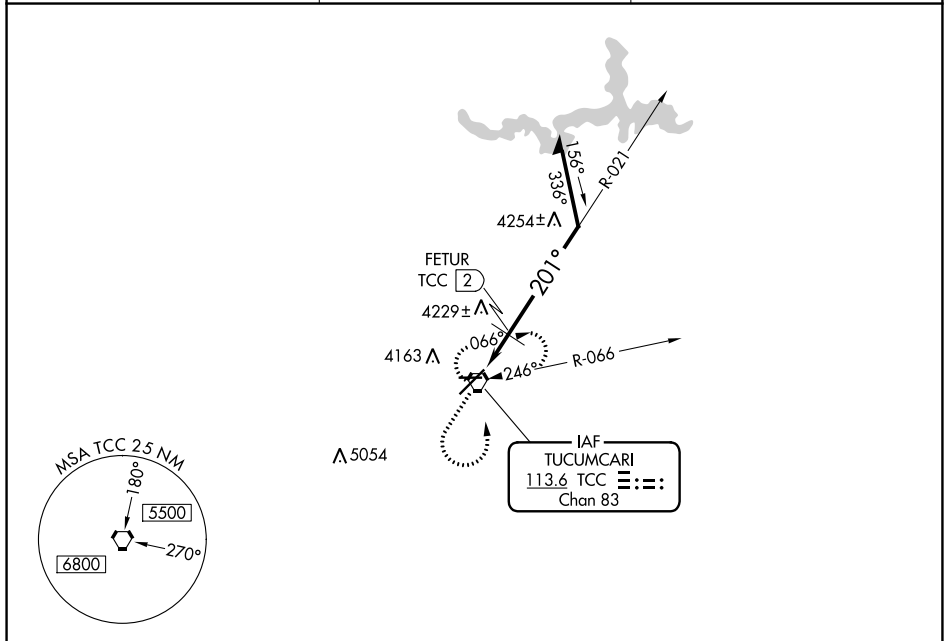
# VOR RWY 21

TUCUMCARI MUNI (TCC)

▼ If local altimeter setting not received, procedure NA. Circling NA for Cat D north of Rwy 8 and northwest of Rwy 21.

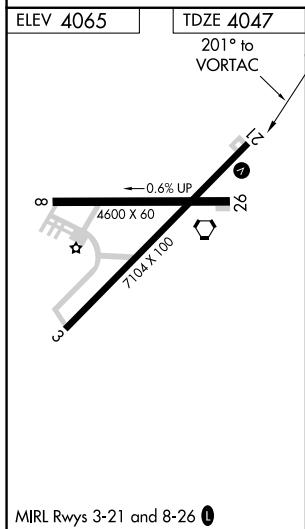
MISSED APPROACH: Climb to 5100 then climbing left turn to 6100 direct TCC VORTAC and hold.

ASOS <b>119.275</b>	ALBUQUERQUE CENTER <b>126.85 285.6</b>	UNICOM <b>122.95 (CTAF) 0</b>
------------------------	---	----------------------------------



SW-1, 05 SEP 2024 to 03 OCT 2024

SW-1, 05 SEP 2024 to 03 OCT 2024



▲ 5229				
5100	6100	TCC		
TCC VORTAC		6100	Remain within 10 NM	
021°		5800		
FETUR TCC (2)		4600		
≤ 3.03°		TCH 52		
1.6 NM				
CATEGORY	A	B	C	D
S-21	4600-1	553 (600-1)	4600-1½ 553 (600-1½)	4600-1¾ 553 (600-1¾)
<b>C</b> CIRCLING	4600-1	535 (600-1)	4600-1½ 535 (600-1½)	4640-2 575 (600-2)
FETUR FIX MINIMUMS				
S-21	4480-1	433 (500-1)	4480-1¼ 433 (500-1¼)	4480-1½ 433 (500-1½)
<b>C</b> CIRCLING	4580-1	515 (600-1)	4580-1½ 515 (600-1½)	4640-2 575 (600-2)