

VALDOSTA, GEORGIA

# RNAV (GPS) RWY 18L

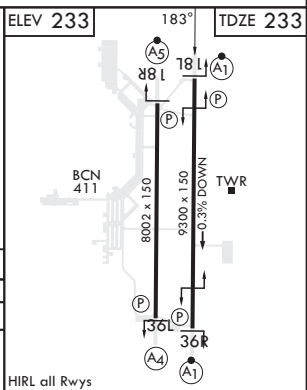
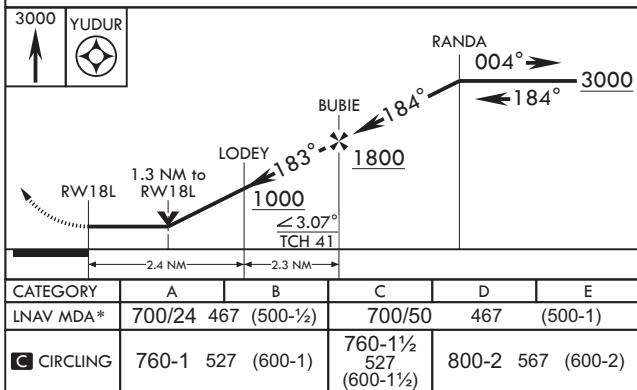
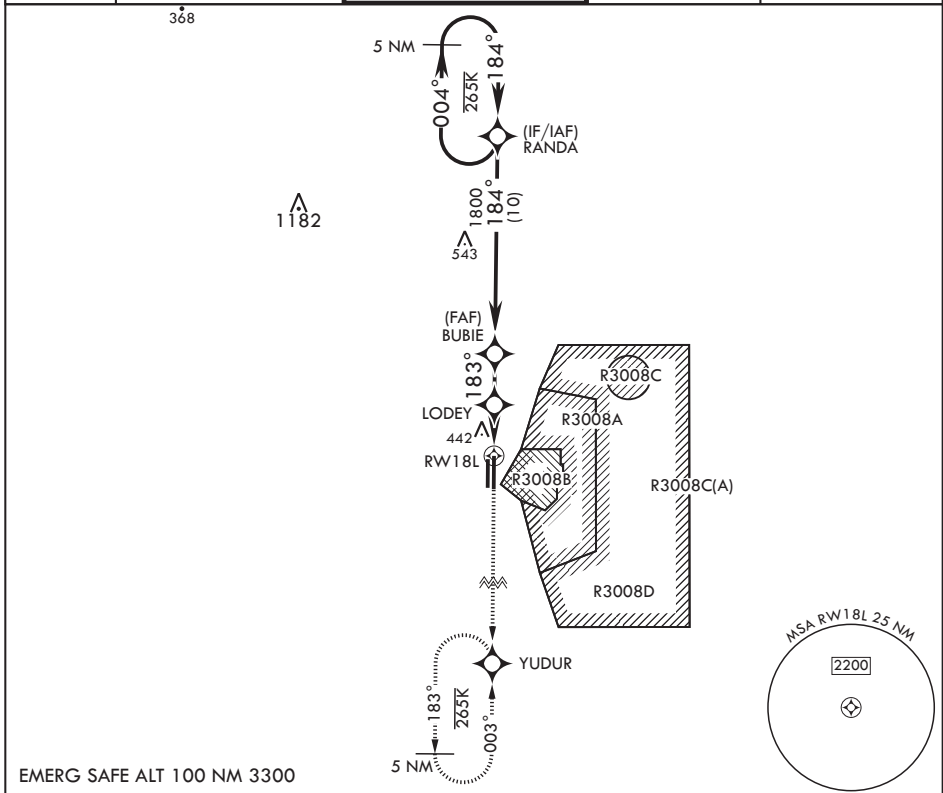
APCH CRS <b>183°</b>	Rwy Idg <b>9300</b>
	TDZE <b>233</b>
	Arprt Elev <b>233</b>

(USAF)

MOODY AFB (KVAD)

RNP APCH-GPS	ALSF-1 	MISSED APPROACH: Climb to 3000 direct YUDUR and hold.
<p><b>▼</b> * When ALS inop, increase CAT AB RVR to 55 and vis to 1 mile, CAT CDE vis to 1 3/8 miles.</p>		

ATIS★ <b>273.5</b>	VALDOSTA APP CON <b>126.6 285.6</b>	TOWER★ <b>128.45 (CTAF) 257.625</b>	GND CON <b>138.95 275.8</b>	CLNC DEL <b>120.625 296.7</b>
-----------------------	--	--	--------------------------------	----------------------------------



VALDOSTA, GEORGIA  
Amdt 2 25JAN24

30°58'N - 83°12'W

MOODY AFB (KVAD)

# RNAV (GPS) RWY 18L

SE-4, 05 SEP 2024 to 03 OCT 2024

SE-4, 05 SEP 2024 to 03 OCT 2024