

TACAN Y RWY 18R

TACAN VAD Chan 80	APCH CRS 180°	Rwy Idg TDZE Arprt Elev 8002 231 233	[USAF]	MOODY AFB (KVAD)
-----------------------------	-------------------------	--	--------	------------------

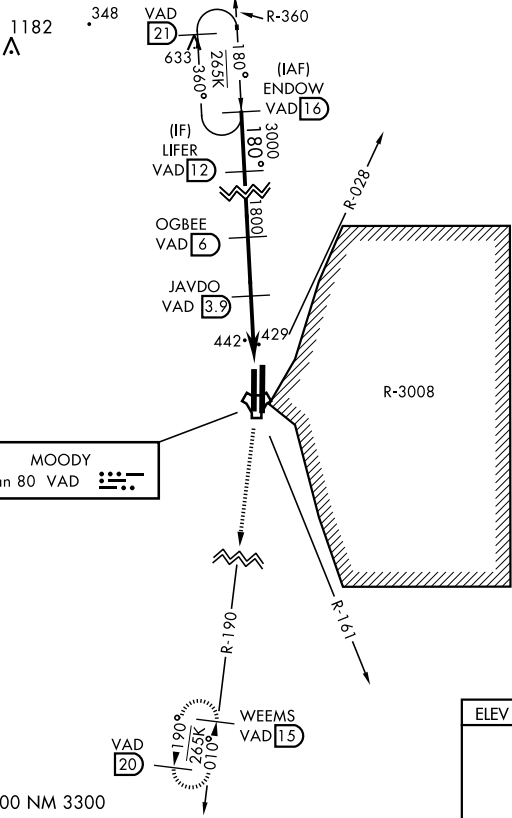
▼ * When ALS inop, increase CAT AB RVR to 55 and vis to 1 mile, CAT CDE vis to 1 1/2 miles.

MALSR **A5**

MISSED APPROACH: Climb to 3000 on VAD TACAN R-190 to WEEMS and hold.

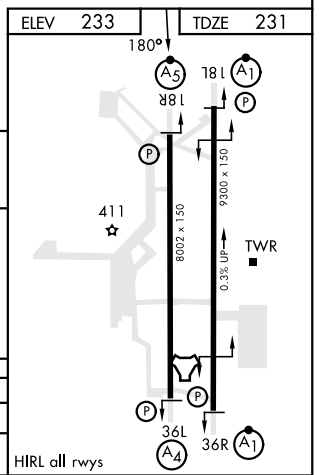
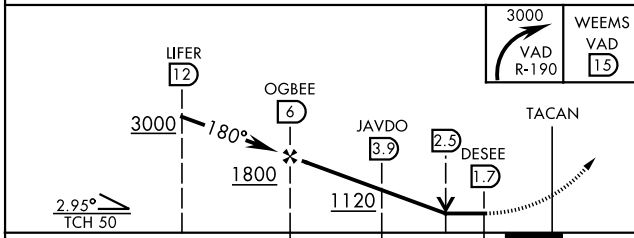
ATIS ★ 273.5	VALDOSTA APP CON 126.6 285.6	TOWER ★ 128.45 (CTAF) 257.625	GND CON 138.95 275.8	CLNC DEL 120.625 296.7
------------------------	--	---	--------------------------------	----------------------------------

Rwy 18R helicopter visibility reduction below RVR 4000 not authorized.



CAUTION: Remain west of VAD R-028 and VAD R-161 when R-3008 is active.

EMERG SAFE ALT 100 NM 3300



CATEGORY	A	B	C	D	E
S-18R *	700/40	469 (500-3/4)	700/50	469 (500-1)	
CIRCLING	760-1	527 (600-1)	760-1 1/2 527 (600-1 1/2)	800-2	567 (600-2)

TACAN Y RWY 18R

SE-4, 05 SEP 2024 to 03 OCT 2024

SE-4, 05 SEP 2024 to 03 OCT 2024