

# TACAN Y RWY 36L

TACAN VAD Chan <b>80</b>	APCH CRS <b>010°</b>	Rwy Idg TDZE Arprt Elev	<b>8002</b> <b>225</b> <b>233</b>
-----------------------------	-------------------------	-------------------------------	---

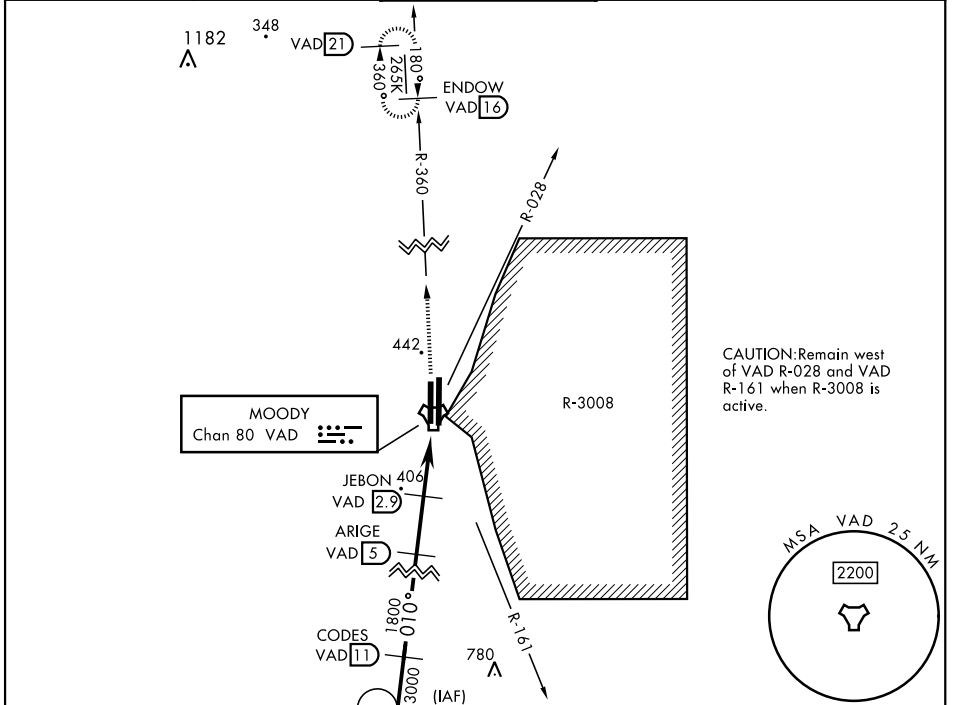
[USAF]

MOODY AFB (KVAD)

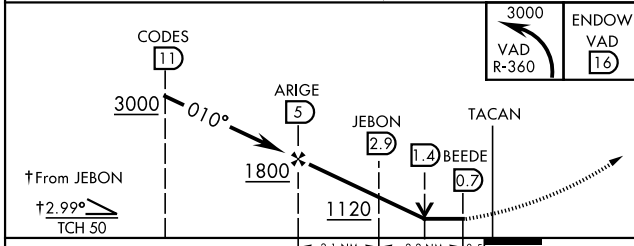
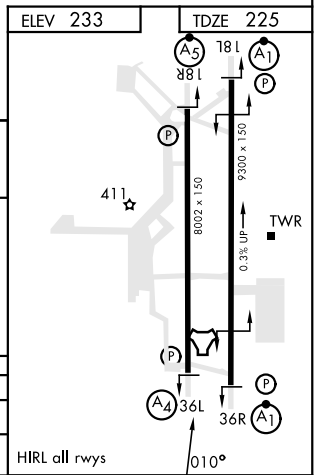
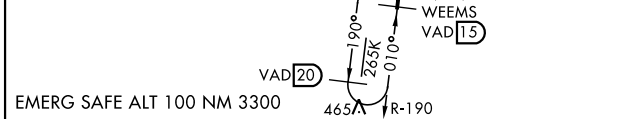
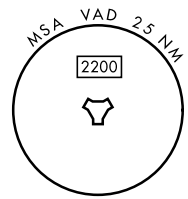
▼ \* When ALS inop, increase CAT AB RVR to 55 and vis to 1 mile, CAT CDE vis to 1¼ miles.

MALS (A4) MISSED APPROACH: Climb to 3000 on VAD TACAN R-360 to ENDOW and hold.

ATIS ★ <b>273.5</b>	VALDOSTA APP CON <b>126.6 285.6</b>	TOWER ★ <b>128.45 (CTAF) 257.625</b>	GND CON <b>138.95 275.8</b>	CLNC DEL <b>120.625 296.7</b>
------------------------	--	---	--------------------------------	----------------------------------



CAUTION: Remain west of VAD R-028 and VAD R-161 when R-3008 is active.



CATEGORY	A	B	C	D	E
S-36L*	660/40	435 (500-¾)	660/50	435 (500-1)	
◉ CIRCLING	760-1	527 (600-1)	760-1½ 527 (600-1½)	800-2	567 (600-2)

HIRL all rwys

# TACAN Y RWY 36L

SE-4, 05 SEP 2024 to 03 OCT 2024

SE-4, 05 SEP 2024 to 03 OCT 2024