

VOR/DME VCT 109.0 Chan 27	APP CRS 127°	Rwy Idg TDZE Apt Elev 9111 115 115
--	------------------------	--

VOR RWY 13

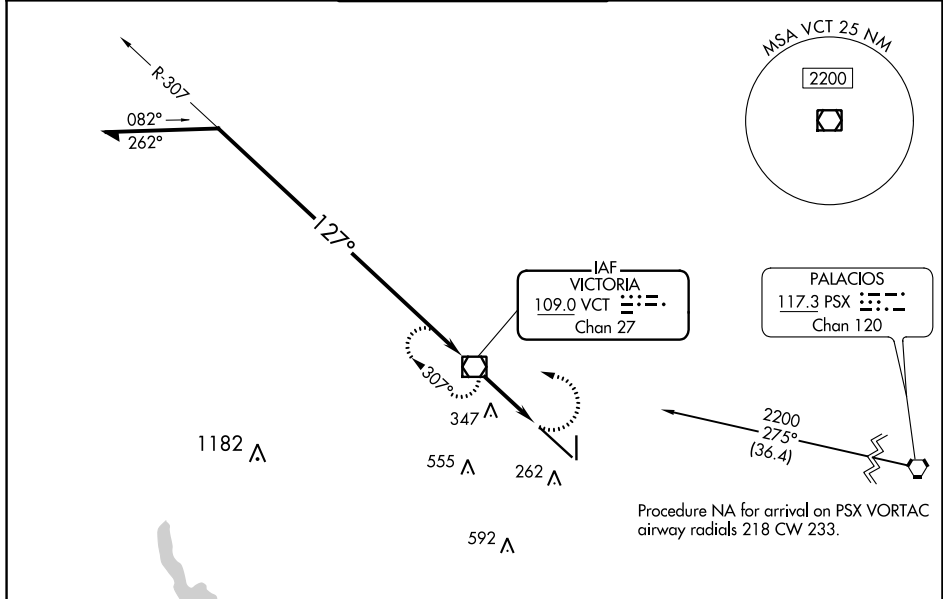
VICTORIA RGNL (VCT)

⚠ For inop ALS, increase Cat C/D/E visibility to 1 3/8 SM.

MALSR

MISSED APPROACH:
Climbing left turn to 2200
direct VCT VOR/DME and
hold, continue climb-in-hold
to 2200.

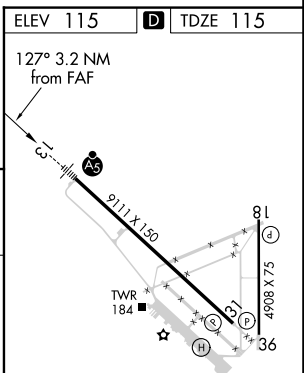
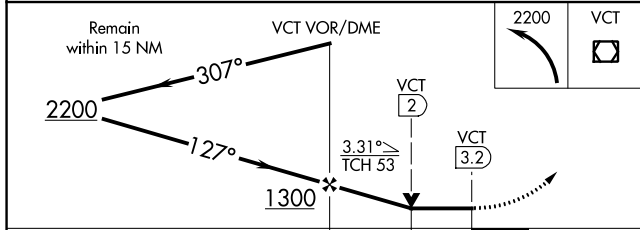
ATIS 119.025	HOUSTON CENTER 135.05 353.6	VICTORIA TOWER * 126.075 (CTAF) 0 257.95	GND CON 120.525 239.25	UNICOM 122.7
------------------------	---------------------------------------	---	----------------------------------	------------------------



SC-5, 05 SEP 2024 to 03 OCT 2024

SC-5, 05 SEP 2024 to 03 OCT 2024

ELEV 115	D TDZE 115
----------	-------------------



MIRL Rwy 18-36
REIL Rwy 18 and 36
HIRL Rwy 13-31

FAF to MAP 3.2 NM

Knots	60	90	120	150	180
Min:Sec	3:12	2:08	1:36	1:17	1:04

CATEGORY	A	B	C	D	E
S-13	600-1/2	485 (500-1/2)	600-1	485 (500-1)	
C CIRCLING	600-1	485 (500-1)	820-2 705 (800-2)	880-2 1/2 765 (800-2 1/2)	NA