

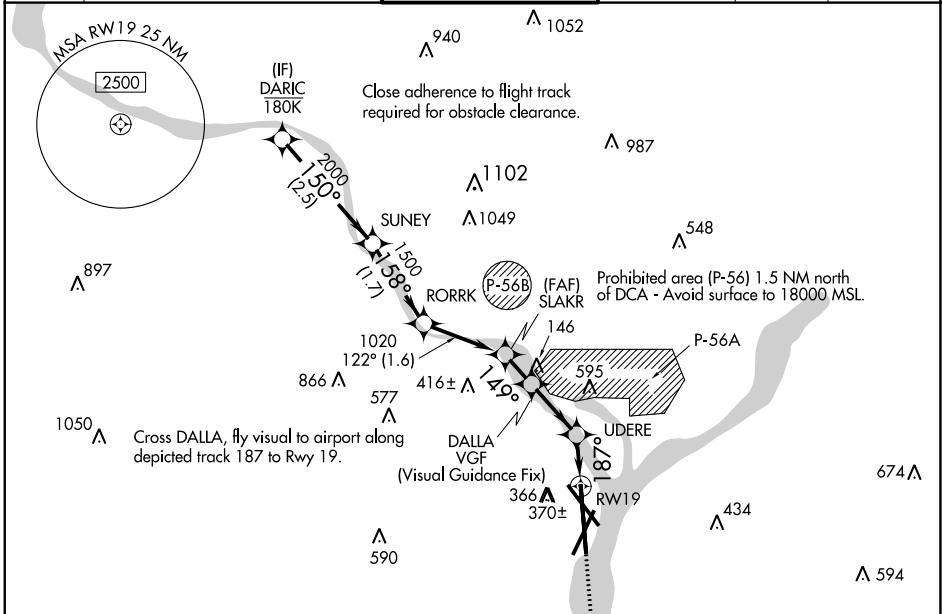
APP CRS	Rwy Idg	<b>6869</b>
<b>187°</b>	TDZE	<b>13</b>
	Apt Elev	<b>14</b>

# RNAV (GPS) Y RWY 19

RONALD REAGAN WASHINGTON NTL (DCA)

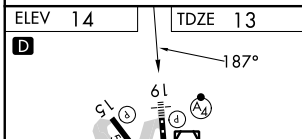
RNP APCH - GPS.		MALS F A4	MISSED APPROACH: (Do not exceed 165K until Rwy 19) Climb to 3000 on FMS lateral path to Rwy 19, then direct BADDN and hold, continue climb-in-hold to 3000. If unable to follow the FMS lateral path, climb to 3000 and turn to heading 187° direct BADDN and hold, continue climb-in-hold to 3000.		
RADAR required.					
<p>▼</p> <p>▲ Rwy 19 helicopter visibility reduction below ¾ SM NA. Inop table does not apply.</p>					

D-ATIS	POTOMAC APP CON (WEST/SOUTH)	WASHINGTON TOWER	GND CON	CLNC DEL	CPDLC
<b>132.65</b>	<b>119.85 239.25</b> <b>124.2 360.8</b>	<b>119.1 257.6</b>	<b>121.7 257.6</b>	<b>128.25</b>	



NE-3, 05 SEP 2024 to 03 OCT 2024

NE-3, 05 SEP 2024 to 03 OCT 2024



ELEV 14	TDZE 13
<p>3000</p> <p>FMS Lateral to RWY19</p> <p>BADDN</p> <p>*Check altitude. Turns required in the visual segment.</p>	
<p>DARIC 2700</p> <p>SUNEY 2000</p> <p>RORRK 1500</p> <p>SLAKR 1020</p> <p>DALLA *780</p> <p>UDERE *373</p> <p>RWY19</p> <p>2.5 NM   1.7 NM   1.6 NM   0.7 NM   1.2 NM   0.9 NM</p>	
CATEGORY	A B C D
LNAV MDA	780-2½ 767 (800-2½)

