

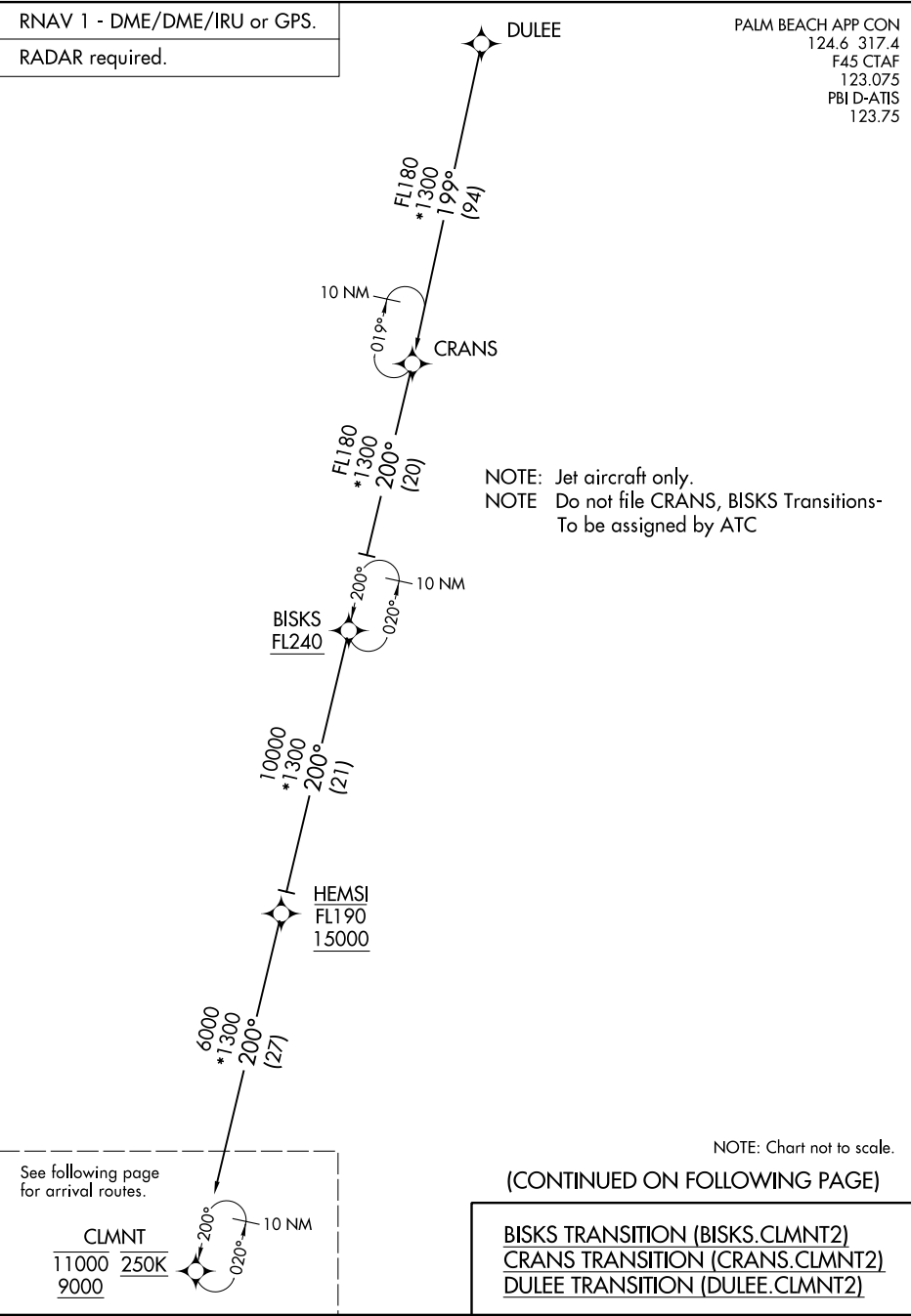
# CLMNT TWO ARRIVAL (RNAV) Transition Routes

WEST PALM BEACH, FLORIDA

RNAV 1 - DME/DME/IRU or GPS.

RADAR required.

PALM BEACH APP CON  
124.6 317.4  
F45 CTAF  
123.075  
PBI D-ATIS  
123.75

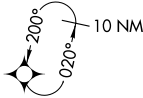


SE-3, 05 SEP 2024 to 03 OCT 2024

SE-3, 05 SEP 2024 to 03 OCT 2024

See following page for arrival routes.

CLMNT  
11000 250K  
9000



# CLMNT TWO ARRIVAL (RNAV) Transition Routes

WEST PALM BEACH, FLORIDA