

ILS/DME I-PBI 111.9 Chan 56	APP CRS 099°	Rwy Idg 8151 TDZE 16 Apt Elev 20
---	------------------------	---

ILS or LOC RWY 10L

PALM BEACH INTL (PBI)

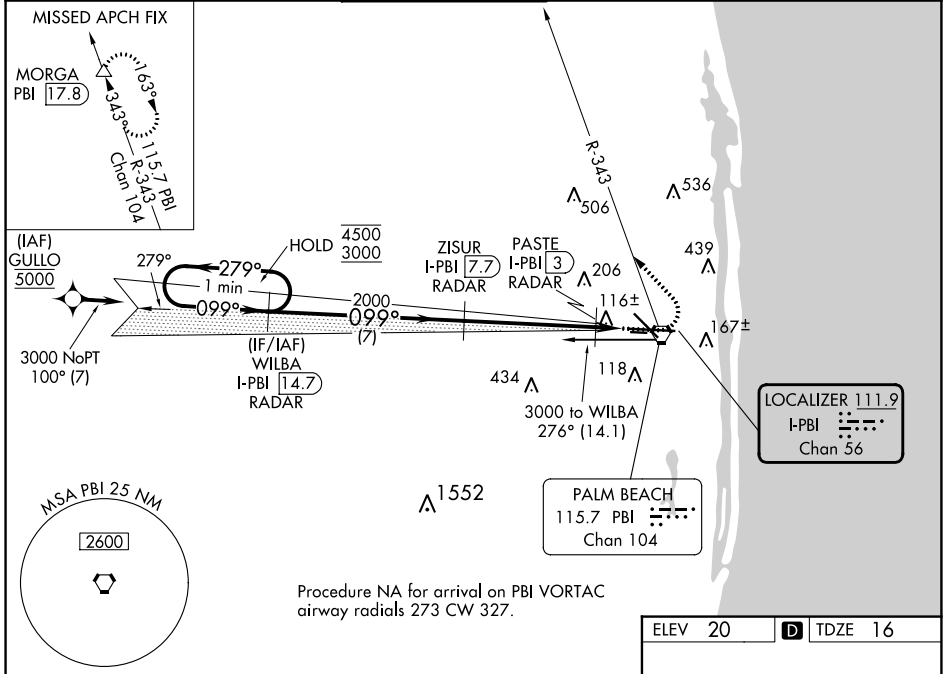
DME required. RNP APCH-GPS. From GULLO.

For inop ALS, increase S-LOC 10L Cat C/D visibility to RVR 5500.
* RVR 1800 authorized with use of FD or AP or HUD to DA.

MALSRS

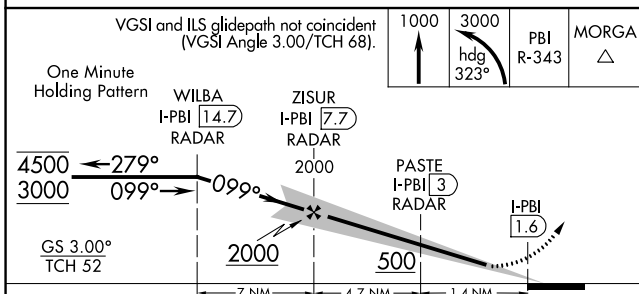
MISSED APPROACH: Climb to 1000 then climbing left turn to 3000 on heading 323° and PBI VORTAC R-343 to MORGA/PBI 17.8 DME and hold.

D-ATIS 123.75	PALM BEACH APP CON 128.3 317.4	PALM BEACH TOWER 119.1 257.8	GND CON 121.9 284.6	CLNC DEL 121.6 284.6	CPDLC
-------------------------	--	--	-------------------------------	--------------------------------	-------

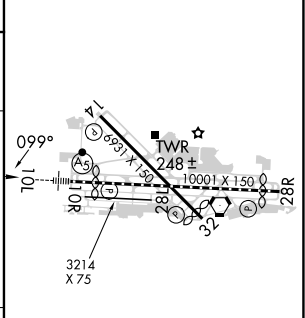


SE-3, 05 SEP 2024 to 03 OCT 2024

SE-3, 05 SEP 2024 to 03 OCT 2024



ELEV 20	TDZE 16
---------	---------



CATEGORY	A	B	C	D
S-ILS 10L *	216/24 200 (200-½)			
S-LOC 10L	380/24 364 (400-½)	380/35 364 (400-¾)		
CIRCLING	560-1 540 (600-1)	740-2 720 (800-2)		780-2½ 760 (800-2½)

HIRL Rwy 10L-28R
REIL Rwys 10R, 14, 28L, 28R and 32
MIRL Rwys 14-32 and 10R-28L