

LOC I-PWB <b>111.9</b>	APP CRS <b>279°</b>	Rwy Idg TDZE Apt Elev	<b>8240</b> <b>18</b> <b>20</b>
---------------------------	------------------------	-----------------------------	---------------------------------------

# ILS or LOC RWY 28R

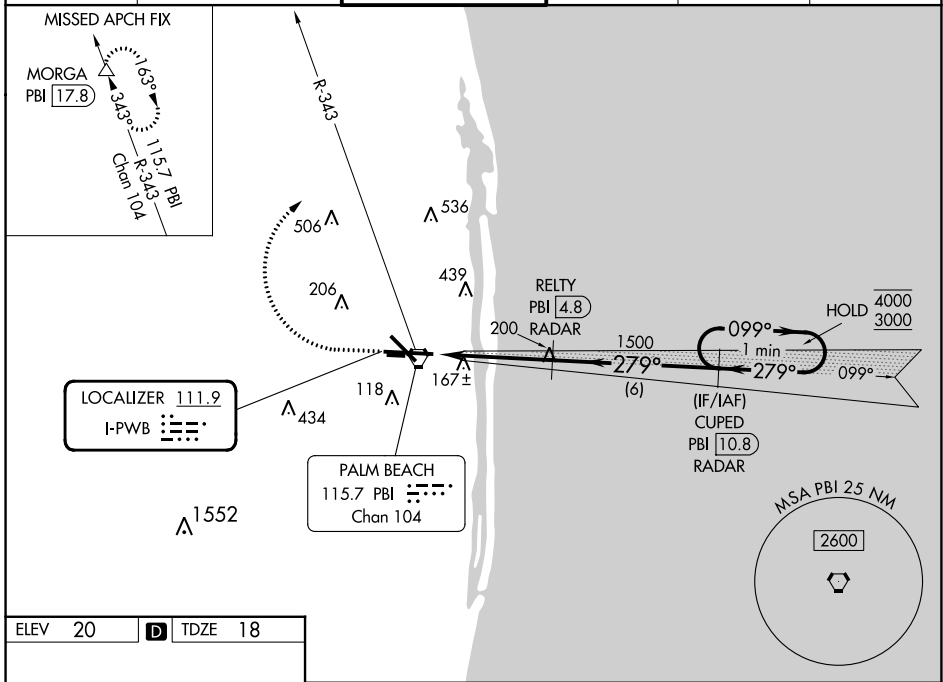
PALM BEACH INTL (PBI)

DME required. RADAR required for procedure entry.

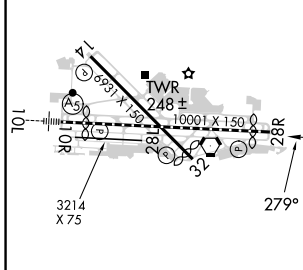
**▲**

MISSED APPROACH: Climb to 500 then climbing right turn to 3000 on PBI VORTAC R-343 to MORGA/PBI 17.8 DME and hold.

D-ATIS <b>123.75</b>	PALM BEACH APP CON <b>128.3 317.4</b>	PALM BEACH TOWER <b>119.1 257.8</b>	GND CON <b>121.9 284.6</b>	CLNC DEL <b>121.6 284.6</b>	CPDLC
-------------------------	--	--	-------------------------------	--------------------------------	-------



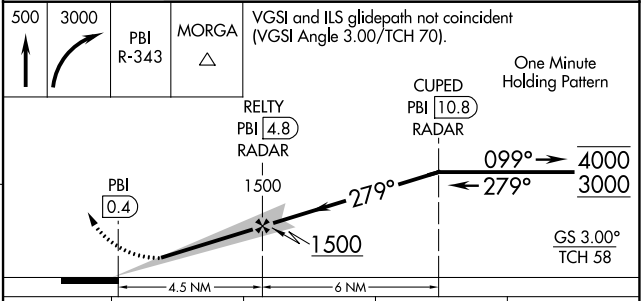
ELEV 20	<b>D</b>	TDZE 18
---------	----------	---------



HIRL Rwy 10L-28R  
REIL Rwys 10R, 14, 28L, 28R and 32  
MIRL Rwys 14-32 and 10R-28L

FAF to MAP 4.5 NM

Knots	60	90	120	150	180
Min:Sec	4:30	3:00	2:15	1:48	1:30



CATEGORY	A	B	C	D
S-ILS 28R	218/40 200 (200-¾)			
S-LOC 28R	460/55	442 (500-1)	460-1⅓	442 (500-1⅓)
<b>C</b> CIRCLING	560-1	540 (600-1)	740-2 720 (800-2)	780-2½ 760 (800-2½)

SE-3, 05 SEP 2024 to 03 OCT 2024

SE-3, 05 SEP 2024 to 03 OCT 2024