

APP CRS	Rwy Idg	8151
099°	TDZE	16
	Apt Elev	20

RNAV (RNP) Z RWY 10L

PALM BEACH INTL (PBI)

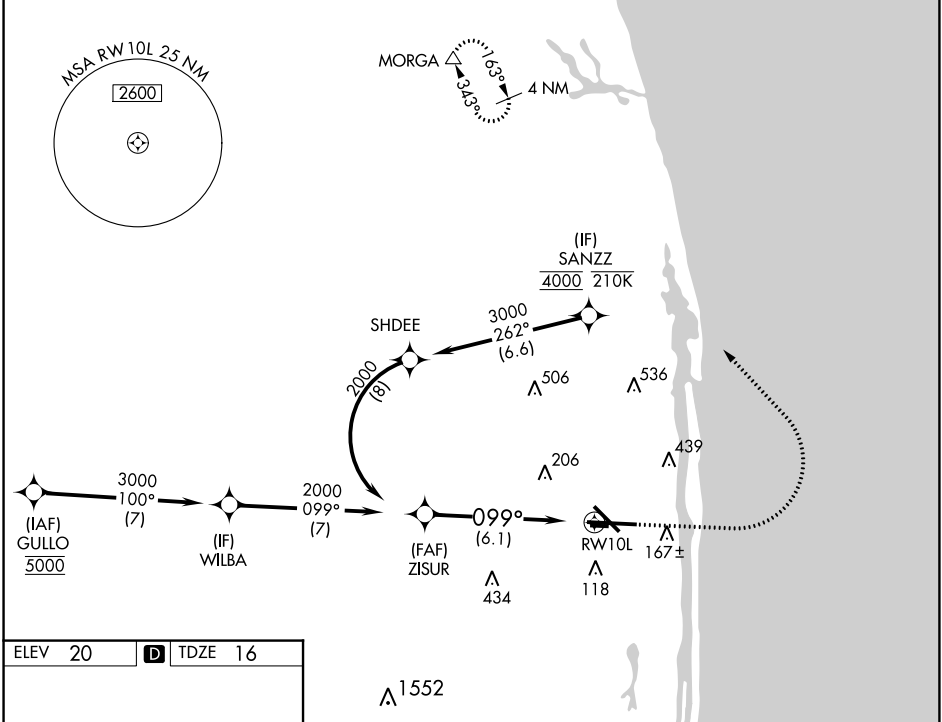
RNP AR APCH - GPS.

⚠ For uncompensated Baro-VNAV systems, procedure NA below 6°C or above 54°C.

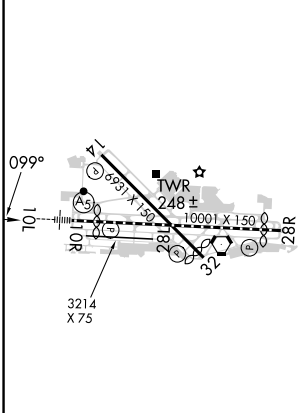
MALSR

MISSED APPROACH: Climb to 1000 then climbing left turn to 3000 direct MORGA and hold.

D-ATIS	PALM BEACH APP CON	PALM BEACH TOWER	GND CON	CLNC DEL	CPDLC
123.75	128.3 317.4	119.1 257.8	121.9 284.6	121.6 284.6	

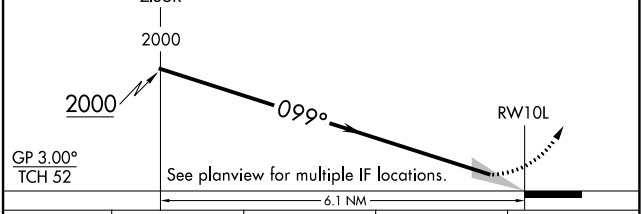


ELEV 20	D	TDZE 16
---------	----------	---------



VGSI and RNAV glidepath not coincident (VGSI Angle 3.00/TCH 68).

1000	3000	MORGA
↑	↙	△



GP 3.00°	TCH 52				
CATEGORY	A	B	C	D	
RNP 0.30 DA	355/26 339 (400-1/2)				

AUTHORIZATION REQUIRED

HIRL Rwy 10L-28R
REIL Rws 10R, 14, 28L, 28R and 32
MIRL Rws 14-32 and 10R-28L

SE-3, 05 SEP 2024 to 03 OCT 2024

SE-3, 05 SEP 2024 to 03 OCT 2024