

WAAS CH 45518 W28A	APP CRS 279°	Rwy Idg 8240 TDZE 18 Apt Elev 20
----------------------------------------	------------------------	-------------------------------------------------------------

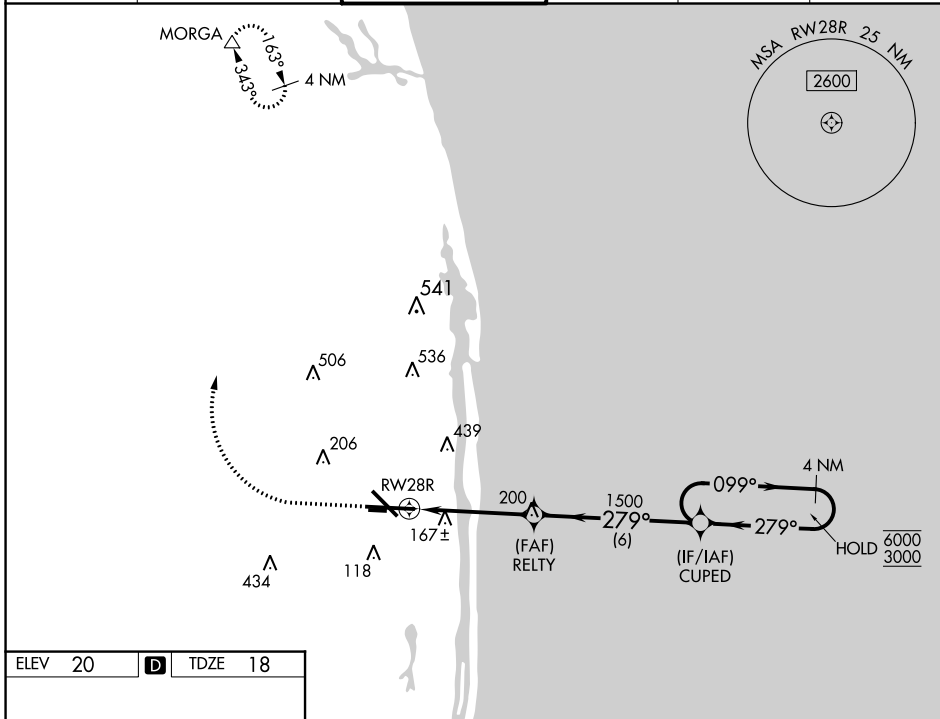
RNAV (GPS) Y RWY 28R

PALM BEACH INTL (PBI)

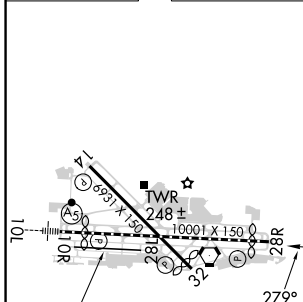
RNP APCH - GPS.
 ⚠ For uncompensated Baro-VNAV systems, procedure NA below 6°C or above 54°C.

MISSED APPROACH: Climb to 500 then climbing right turn to 3000 direct MORGA and hold.

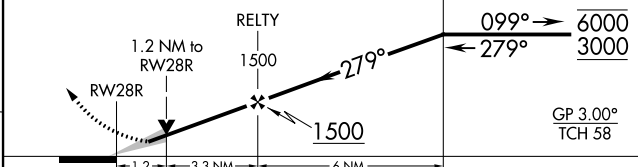
D-ATIS 123.75	PALM BEACH APP CON 128.3 317.4	PALM BEACH TOWER 119.1 257.8	GND CON 121.9 284.6	CLNC DEL 121.6 284.6	CPDLC
-------------------------	------------------------------------------	----------------------------------------	-------------------------------	--------------------------------	-------



ELEV 20	D	TDZE 18
---------	----------	---------



500 3000 MORGA VGSi and RNAV glidepath not coincident (VGSi Angle 3.00/TCH 70). 4 NM Holding Pattern



CATEGORY	A	B	C	D
LPV DA		218/40	200 (200-¾)	
LNAV/VNAV DA		342/50	324 (400-1)	
LNAV MDA	460/55	442 (500-1)	460-1⅓	442 (500-1⅓)
C CIRCLING	560-1	540 (600-1)	740-2 720 (800-2)	780-2½ 760 (800-2½)

HIRL Rwy 10L-28R
 REIL Rwys 10R, 14, 28L, 28R and 32
 MIRL Rwys 14-32 and 10R-28L

SE-3, 05 SEP 2024 to 03 OCT 2024

SE-3, 05 SEP 2024 to 03 OCT 2024