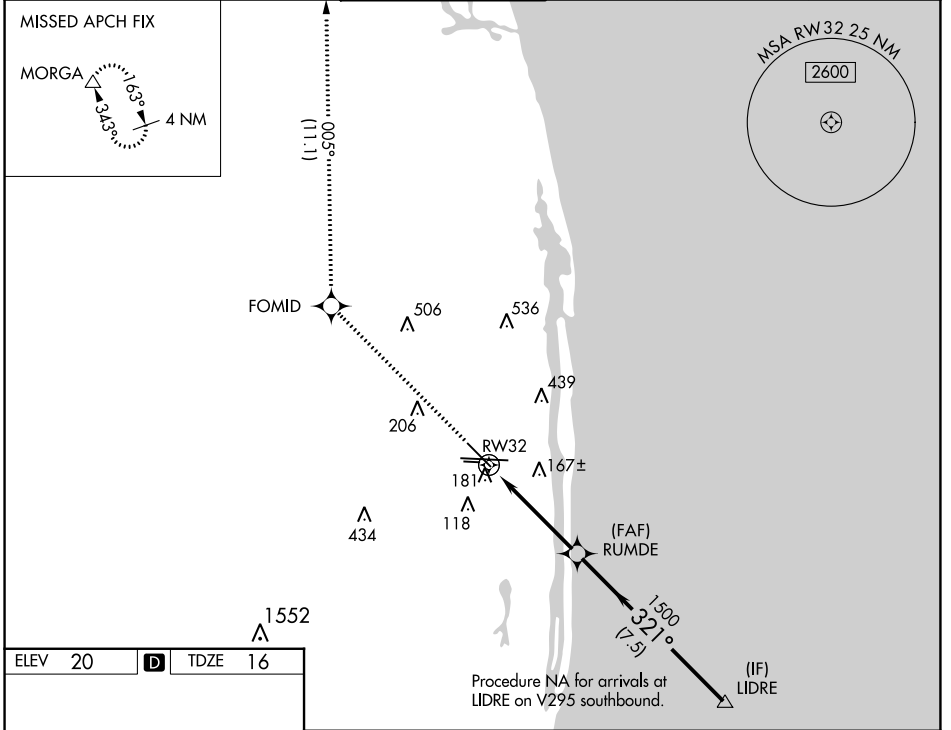


WAAS CH <b>62903</b> <b>W32A</b>	APP CRS <b>321°</b>	Rwy Idg <b>6513</b> TDZE <b>16</b> Apt Elev <b>20</b>
--	------------------------	---

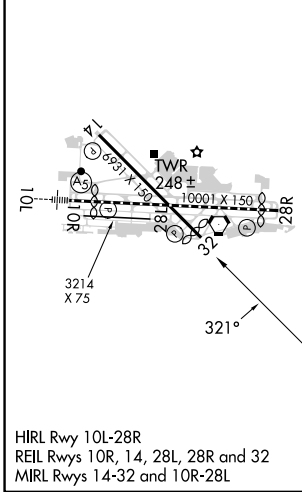
# RNAV (GPS) Y RWY 32

PALM BEACH INTL (PBI)

RNP APCH - GPS.			MISSED APPROACH: Climb to 3000 direct FOMID and on track 005° to MORGA and hold.		
<p><b>▼</b> Circling to Rwy 10L NA at night. Rwy 32 helicopter visibility reduction below 3/4 SM NA.  <b>▲</b> For uncompensated Baro-VNAV systems, LNAV/VNAV NA below 6°C or above 54°C.</p>					
D-ATIS <b>123.75</b>	PALM BEACH APP CON <b>128.3 317.4</b>	PALM BEACH TOWER <b>119.1 257.8</b>	GND CON <b>121.9 284.6</b>	CLNC DEL <b>121.6 284.6</b>	CPDLC



ELEV 20	<b>D</b>	TDZE 16
---------	----------	---------



HIRL Rwy 10L-28R  
REIL Rwys 10R, 14, 28L, 28R and 32  
MIRL Rwys 14-32 and 10R-28L

3000	FOMID	MORGA	VGSi and RNAV glidepath not coincident (VGSi Angle 3.25/TCH 57).	
↑	ir 005°	▲	LIDRE	
	RUMDE		LIDRE	
	1.1 NM to RW32	1500	321°	3000
		1500		GP 3.00° TCH 57
	1.1 NM	3.4 NM	7.5 NM	
CATEGORY	A	B	C	D
LPV DA	266-3/4		250 (300-3/4)	
LNAV/VNAV DA	342-1		326 (400-1)	
LNAV MDA	440-1	424 (500-1)	440-1 1/4	424 (500-1 1/4)
<b>C</b> CIRCLING	560-1	540 (600-1)	740-2 720 (800-2)	780-2 1/2 760 (800-2 1/2)

SE-3, 05 SEP 2024 to 03 OCT 2024

SE-3, 05 SEP 2024 to 03 OCT 2024