

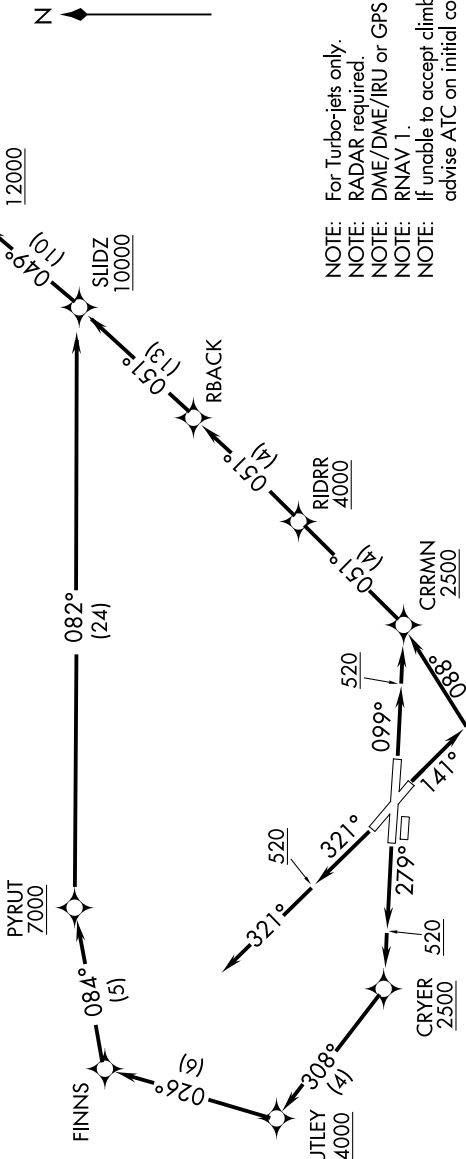
# SLIDZ TWO DEPARTURE (RNAV)

SE-3, 05 SEP 2024 to 03 OCT 2024

**TOP ALTITUDE:**  
Rwy 10L, 14, 28R: 12000  
Rwy 32: ASSIGNED BY ATC

**TAKEOFF MINIMUMS**  
Rwys 10L, 14, 28R, 32: Standard with minimum climb of 500' per NM to 520.

D-ATIS 123.75  
CLNC DEL 121.6 284.6  
CPDLC  
GND CON 121.9 284.6  
PALM BEACH TOWER 119.1 257.8  
PALM BEACH DEP CON 128.3 317.4



NOTE: For Turbo-jets only.  
NOTE: RADAR required.  
NOTE: DME/DME/IRU or GPS required.  
NOTE: RNAV 1.  
NOTE: If unable to accept climb rates, advise ATC on initial contact.

(NARRATIVE ON FOLLOWING PAGE)

NOTE: Chart not to scale.

SE-3, 05 SEP 2024 to 03 OCT 2024

# SLIDZ TWO DEPARTURE (RNAV)

(SLIDZ2.SLIDZ) 12AUG21