

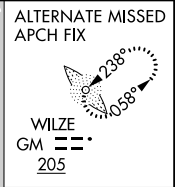
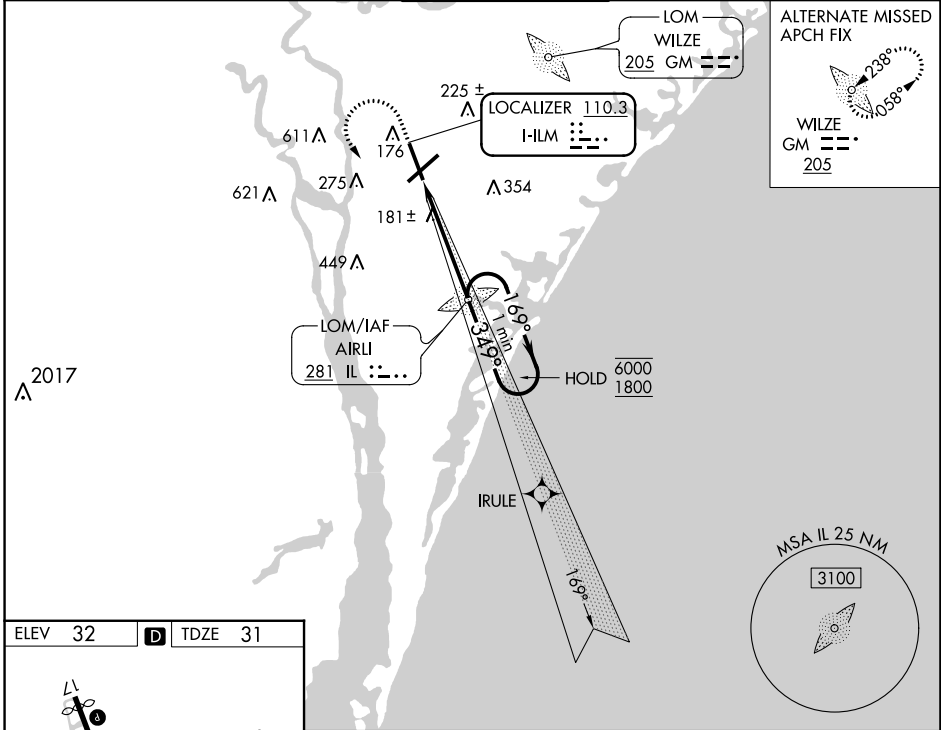
LOC I-ILM <b>110.3</b>	APP CRS <b>349°</b>	Rwy Idg TDZE Apt Elev	<b>7204</b> <b>31</b> <b>32</b>
---------------------------	------------------------	-----------------------------	---------------------------------------

# ILS Y or LOC RWY 35

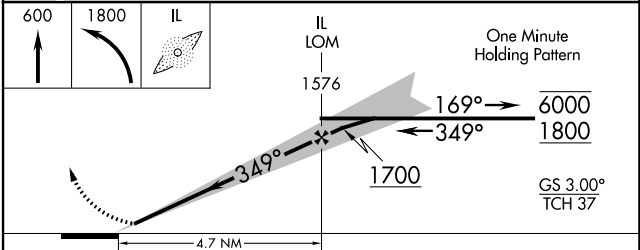
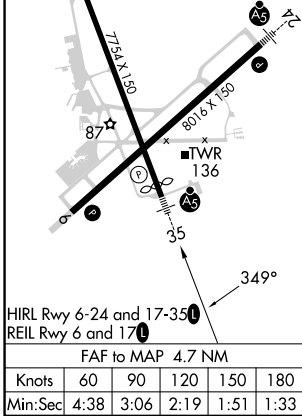
WILMINGTON INTL (ILM)

ADF required. RADAR required for procedure entry.		MALSR 	MISSED APPROACH: Climb to 600 then climbing left turn to 1800 direct AIRLI LOM and hold.
For inop ALS, increase S-LOC 35 Cat C/D visibility to 1 1/2 SM.			

ATIS <b>124.975</b>	WILMINGTON APP CON ★ <b>118.25 284.65</b> (164°-343°) <b>135.75 317.425</b> (344°-163°)	WILMINGTON TOWER ★ <b>119.9</b> (CTAF) <b>239.3</b>	GND CON <b>121.9 348.6</b>	UNICOM <b>122.95</b>
------------------------	---	--	-------------------------------	-------------------------



ELEV 32	<b>D</b>	TDZE 31
---------	----------	---------



CATEGORY	A	B	C	D
S-ILS 35	242/24 211 (300-1/2)			
S-LOC 35	500/24	469 (500-1/2)	500/50	469 (500-1)
<input checked="" type="checkbox"/> CIRCLING	560-1	528 (600-1)	720-2 688 (700-2)	920-3 888 (900-3)