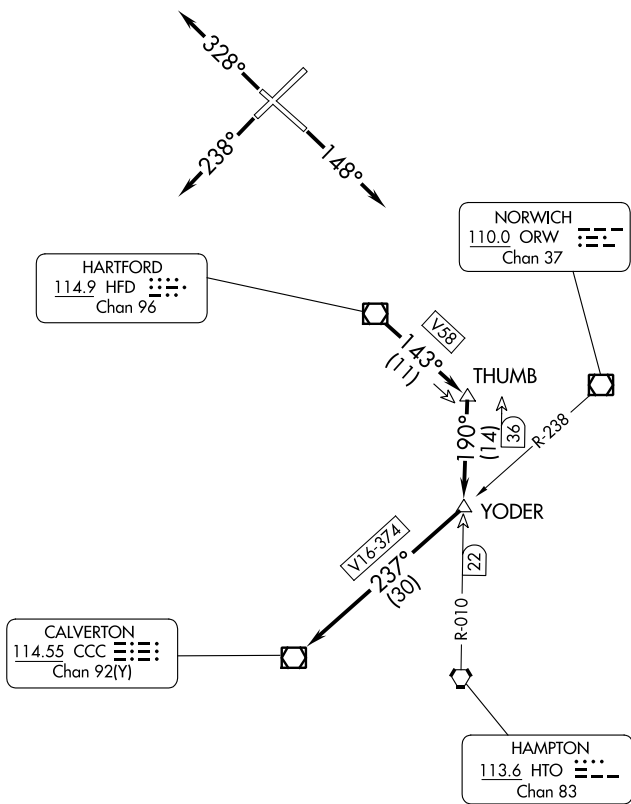


# COASTAL NINE DEPARTURE

**TOP ALTITUDE:  
4000**

D-ATIS 118.15  
CLNC DEL  
121.75 322.3  
GND CON  
121.9 348.6  
CPDLC  
BRADLEY TOWER  
120.3 351.8  
BRADLEY DEP CON  
123.95 290.55 (061°-240°)  
125.35 281.5 (241°-060°)



NOTE: RADAR required.  
NOTE: Initial departure headings are predicated on avoiding noise sensitive areas. Flight crew awareness and compliance is important in minimizing noise impacts on surrounding communities.

TAKEOFF MINIMUMS:

Rwys 6, 15, 24: Standard.  
Rwy 33: Standard with minimum climb of 340' per NM to 1000.

(NARRATIVE ON FOLLOWING PAGE)

NOTE: Chart not to scale.

# COASTAL NINE DEPARTURE

NE-1, 05 SEP 2024 to 03 OCT 2024

NE-1, 05 SEP 2024 to 03 OCT 2024