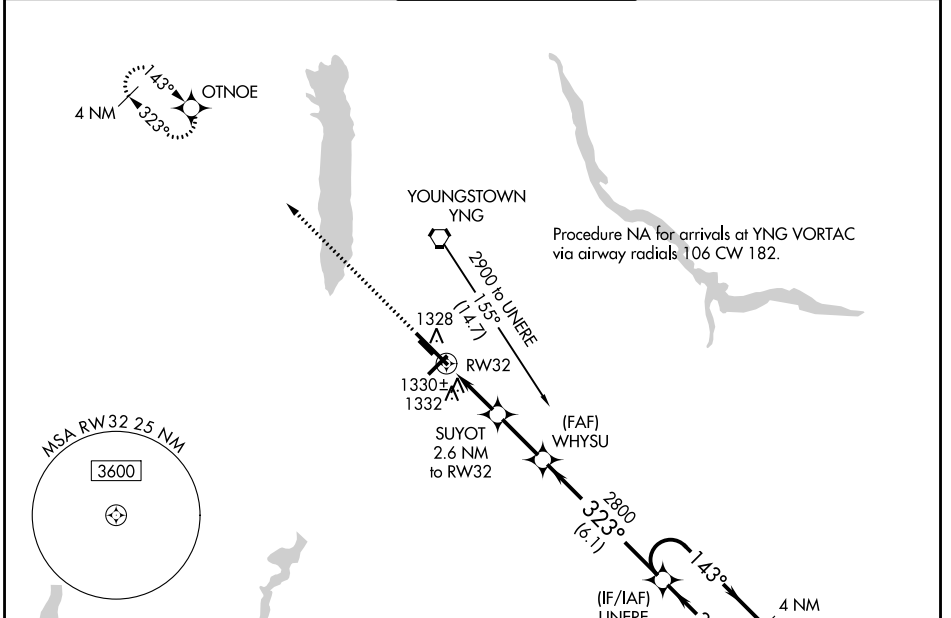


WAAS CH 97406 W32A	APP CRS 323°	Rwy Idg TDZE Apt Elev	9003 1186 1192
----------------------------------------	------------------------	-----------------------------	-------------------------------------------

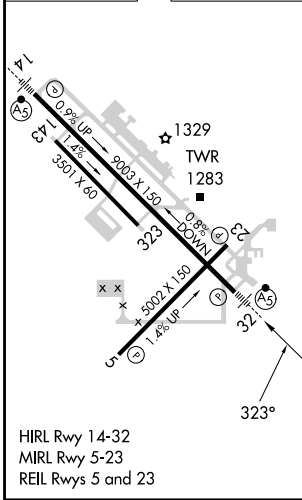
RNAV (GPS) RWY 32

YOUNGSTOWN/WARREN RGNL (YNG)

RNP APCH.		MAISR	MISSED APPROACH: Climb to 2900 direct OTNOE and hold.	
ASR				
For uncompensated Baro-VNAV systems, LNAV/VNAV NA below -17°C or above 46°C. For inop ALS, increase LPV all Cats visibility to RVR 5000 and LNAV Cat D visibility to RVR 6000. Circling Rwy 5 NA at night.				
ATIS 123.75	YOUNGSTOWN APP CON * 133.95 322.3	YOUNGSTOWN TOWER 119.5 263.0	GND CON 121.9 275.8	CLNC DEL 118.25



ELEV 1192	D	TDZE 1186
-----------	----------	-----------



YOUNGSTOWN/WARREN, OHIO
Orig-E 26MAR20

A 2537		2900 OTNOE			
*LNAV only		SUYOT 2.6 NM to RW32		WHYSU 2800	
RW32		*1.1 NM to RW32		UNERE 4 NM Holding Pattern	
1.1		1.5		2.3 NM	
1.1		1.5		6.1 NM	
*2040		*2800		GP 3.00° TCH 35	
CATEGORY	A	B	C	D	
LPV DA		1458/24	272 (300-½)		
LNAV/VNAV DA		1639/60	453 (500-1¼)		
LNAV MDA	1580/24	394 (400-½)		1580/50	394 (400-1)
C CIRCLING	1640-1 448 (500-1)	1660-1 468 (500-1)	1740-1½ 548 (600-1½)	1760-2	568 (600-2)

41°16'N-80°41'W

YOUNGSTOWN/WARREN RGNL (YNG)

RNAV (GPS) RWY 32

EC-2, 05 SEP 2024 to 03 OCT 2024

EC-2, 05 SEP 2024 to 03 OCT 2024