

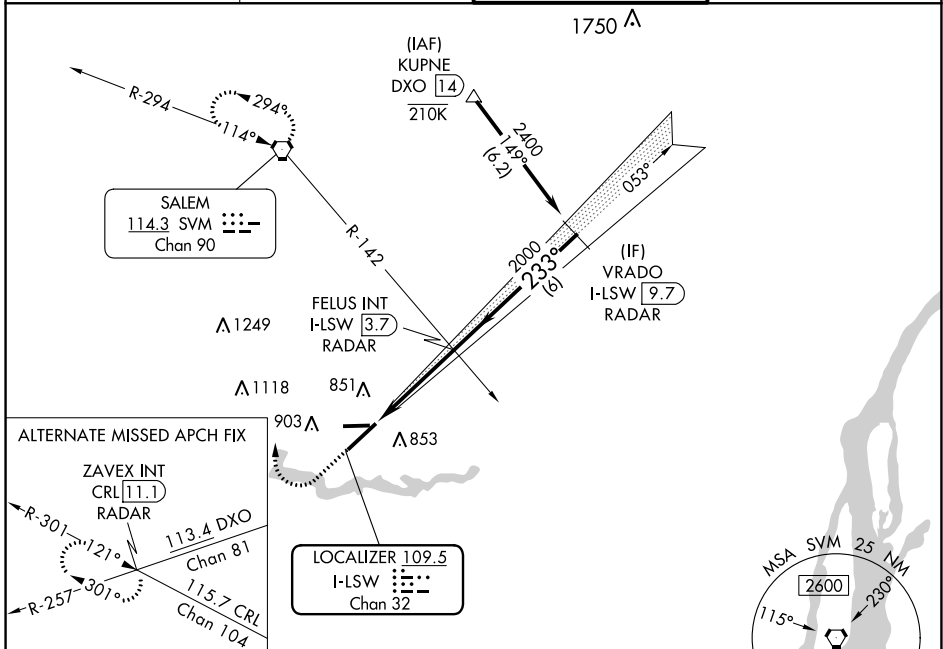
LOC/DME I-LSW 109.5 Chan 32	APP CRS 233°	Rwy Idg 7543 TDZE 710 Apt Elev 716
---	------------------------	---

ILS or LOC RWY 23

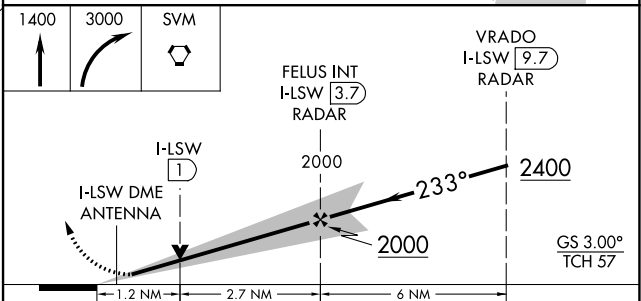
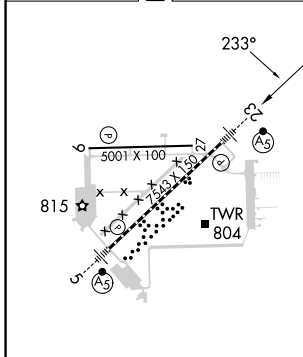
WILLOW RUN (YIP)

RNP APCH-GPS from KUPNE. RADAR or GPS required.	MALSR	MISSED APPROACH: Climb to 1400 then climbing right turn to 3000 direct SVM VORTAC and hold.
---	-------	---

ATIS 127.425	DETROIT APP CON 118.95 284.0	WILLOW RUN TOWER 125.275 256.9	GND CON 119.975
------------------------	--	--	---------------------------



ELEV 716	D	TDZE 710
----------	----------	----------



TDZ/CL Rwy 5 HIRL Rwy 5-23 MIRL Rwy 9-27	FAF to MAP 3.9 NM	<table border="1"> <tr> <td>Knots</td> <td>60</td> <td>90</td> <td>120</td> <td>150</td> <td>180</td> </tr> <tr> <td>Min:Sec</td> <td>3:54</td> <td>2:36</td> <td>1:57</td> <td>1:34</td> <td>1:18</td> </tr> </table>	Knots	60	90	120	150	180	Min:Sec	3:54	2:36	1:57	1:34	1:18
Knots	60	90	120	150	180									
Min:Sec	3:54	2:36	1:57	1:34	1:18									
CATEGORY	A	B	C	D										
S-ILS 23	910-1/2		200 (200-1/2)											
S-LOC 23	1140-1/2	430 (500-1/2)	1140-3/4	430 (500-3/4)										
C CIRCLING	1220-1	504 (600-1)	1220-1 1/2	1400-2 1/4										
			504 (600-1 1/2)	684 (700-2 1/4)										

EC-1, 05 SEP 2024 to 03 OCT 2024

EC-1, 05 SEP 2024 to 03 OCT 2024