

WAAS CH 78144	APP CRS 053°	Rwy Idg TDZE Apt Elev	7543 716 716
W05A			

RNAV (GPS) RWY 5

WILLOW RUN (YIP)

RNP APCH - GPS.

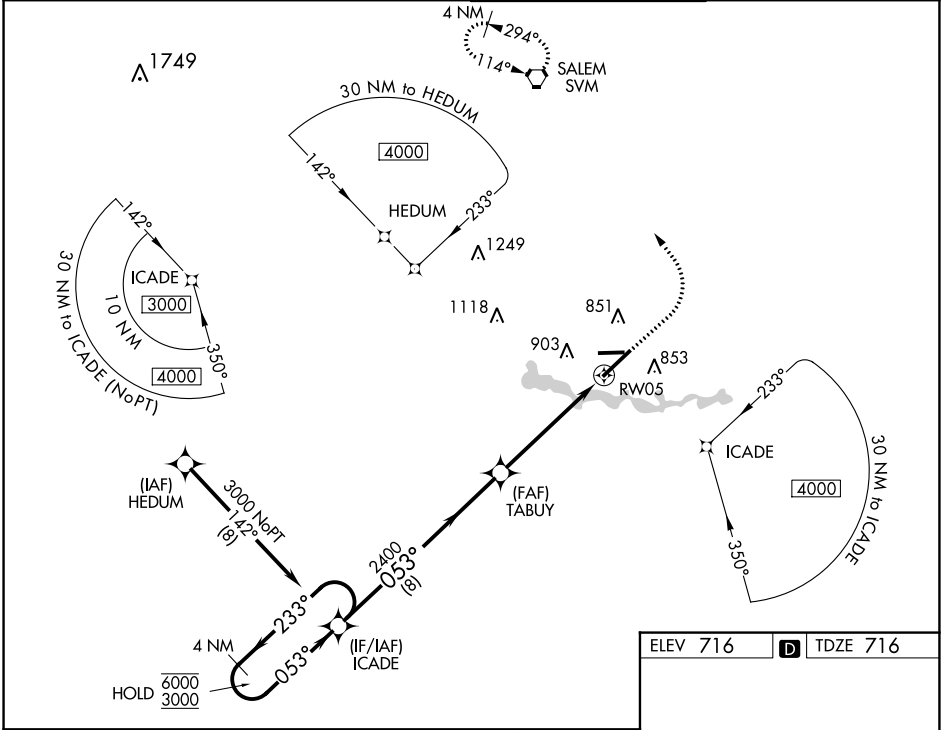
▼ For uncompensated Baro-VNAV systems, LNAV/VNAV NA below -19°C or above 54°C. For inop ALS, increase LNAV/VNAV all Cats visibility to RVR 6000, LNAV Cats C/D visibility to 1 $\frac{3}{8}$ SM.

MALSR



MISSED APPROACH: Climb to 1200 then climbing left turn to 3000 direct SVM VORTAC and hold.

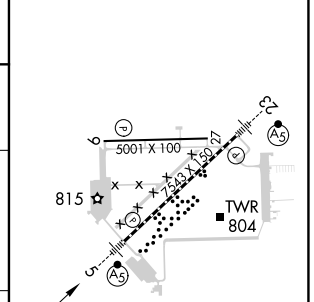
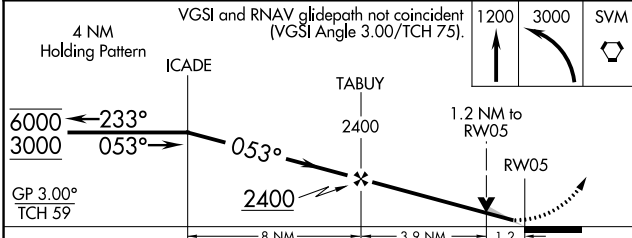
ATIS 127.425	DETROIT APP CON 118.95 284.0	WILLOW RUN TOWER 125.275 256.9	GND CON 119.975
------------------------	--	--	---------------------------



EC-1, 05 SEP 2024 to 03 OCT 2024

EC-1, 05 SEP 2024 to 03 OCT 2024

ELEV 716	D TDZE 716
----------	-------------------



CATEGORY	A	B	C	D
LPV DA	916/18 200 (200- $\frac{1}{2}$)			
LNAV/VNAV DA	1121/40 405 (500- $\frac{3}{4}$)			
LNAV MDA	1200/24	484 (500- $\frac{1}{2}$)	1200/50	484 (500-1)
C CIRCLING	1220-1	504 (600-1)	1220-1 $\frac{1}{2}$ 504 (600-1 $\frac{1}{2}$)	1400-2 $\frac{1}{4}$ 684 (700-2 $\frac{1}{4}$)

TDZ/CL Rwy 5
HIRL Rwy 5-23
MIRL Rwy 9-27