

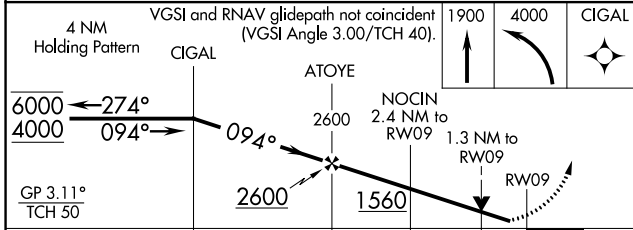
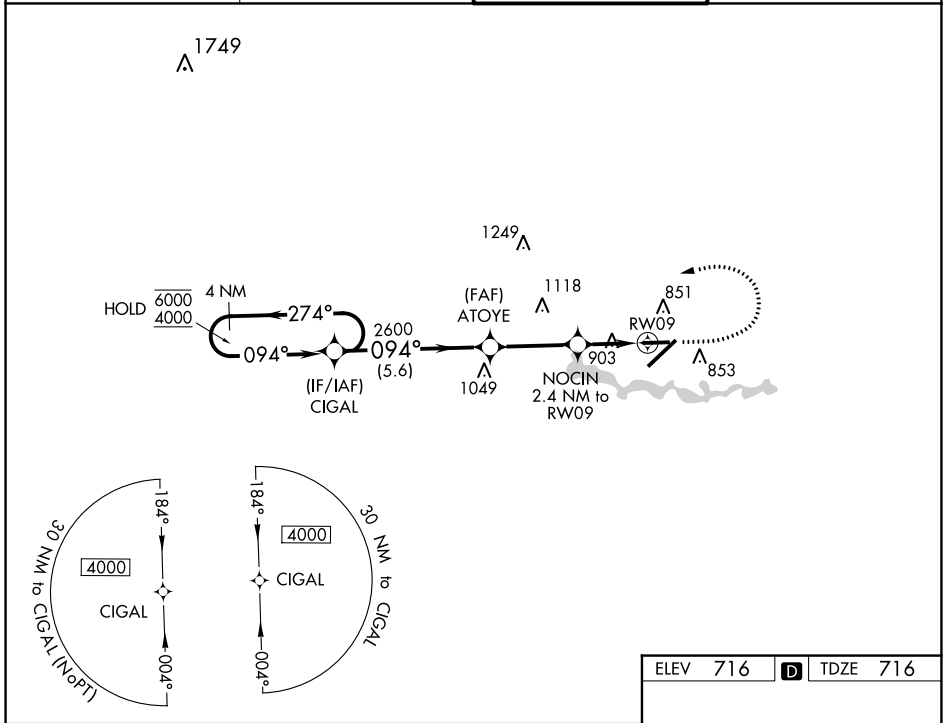
WAAS CH 73035 W09A	APP CRS 094°	Rwy Idg TDZE Apt Elev	5001 716 716
--	------------------------	-----------------------------	---

RNAV (GPS) RWY 9

WILLOW RUN (YIP)

RNP APCH - GPS.	MISSED APPROACH: Climb to 1900 then climbing left turn to 4000 direct CIGAL and hold, continue climb-in-hold to 4000.
▼ Rwy 9 helicopter visibility reduction below 3/4 SM NA. For uncompensated Baro-VNAV systems, LNAV/VNAV NA below -21°C or above 54°C.	

ATIS 127.425	DETROIT APP CON 118.95 284.0	WILLOW RUN TOWER 125.275 256.9	GND CON 119.975
------------------------	--	--	---------------------------



ELEV 716	D TDZE 716
----------	-------------------

TDZ/CL Rwy 5
HIRL Rwy 5-23
MIRL Rwy 9-27

EC-1, 05 SEP 2024 to 03 OCT 2024

EC-1, 05 SEP 2024 to 03 OCT 2024