


RNAV (RNP) Z RWY 30

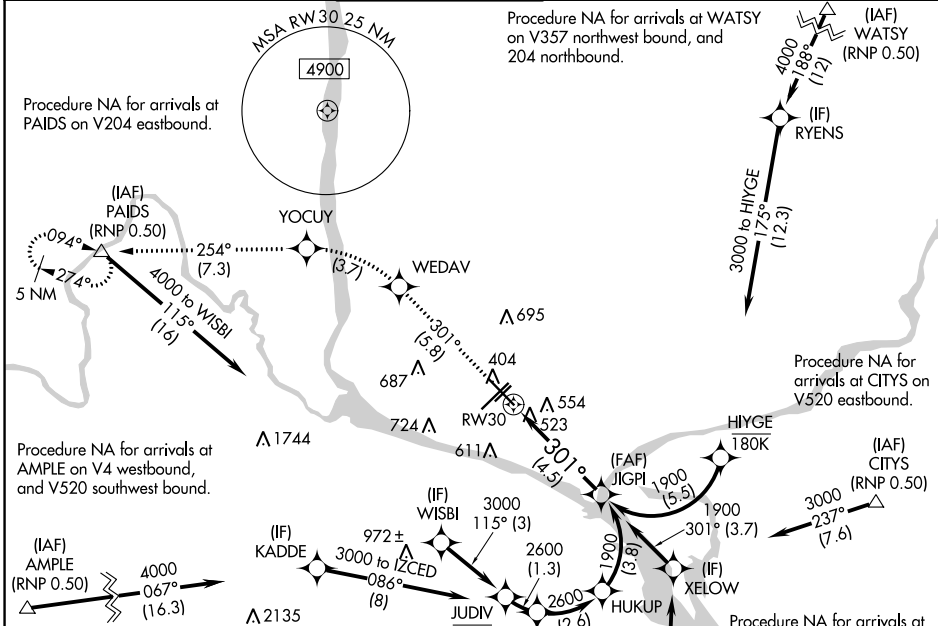
TRI-CITIES (PSC)

APP CRS	Rwy Idg	7504
301°	TDZE	405
	Apt Elev	410

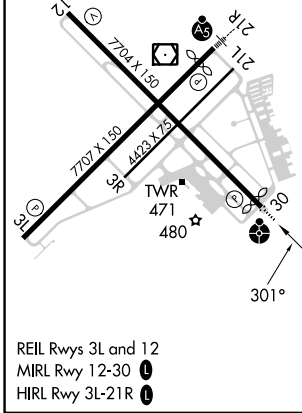
▼ For uncompensated Baro-VNAV systems, procedure NA below -14°C (7°F) or above 54°C (130°F). RF required. GPS required. For inoperative ODALS, increase RNP 0.11 visibility all Cats to 1½ mile, and increase RNP 0.30 visibility all Cats to 1¾ mile.



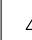

ODALS

MISSED APPROACH: Climb to 5200 on track 301° to WEDAV, left turn to YOCUY, and on track 254° to PAIDS and hold.

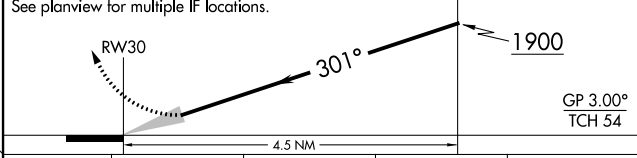
ATIS 125.65	SPOKANE APP CON * 128.75 377.2	TRI-CITIES TOWER * 135.3 (CTAF) 0 323.3	GND CON 121.8	CLNC DEL 120.0	UNICOM 122.95
-----------------------	--	--	-------------------------	--------------------------	-------------------------



ELEV	410	D	TDZE	405
------	-----	----------	------	-----



5200	WEDAV	YOCUY	tr 254°	PAIDS	JIGPI
tr 301°					



CATEGORY	A	B	C	D
RNP 0.11 DA		778-1½	373 (400-1½)	
RNP 0.30 DA		834-1¼	429 (500-1¼)	

AUTHORIZATION REQUIRED

NW-1, 05 SEP 2024 to 03 OCT 2024

NW-1, 05 SEP 2024 to 03 OCT 2024