

WAAS CH <b>40206</b> <b>W03A</b>	APP CRS <b>031°</b>	Rwy Idg TDZE Apt Elev	<b>7707</b> <b>410</b> <b>410</b>
--	------------------------	-----------------------------	---

# RNAV (GPS) Y RWY 3L

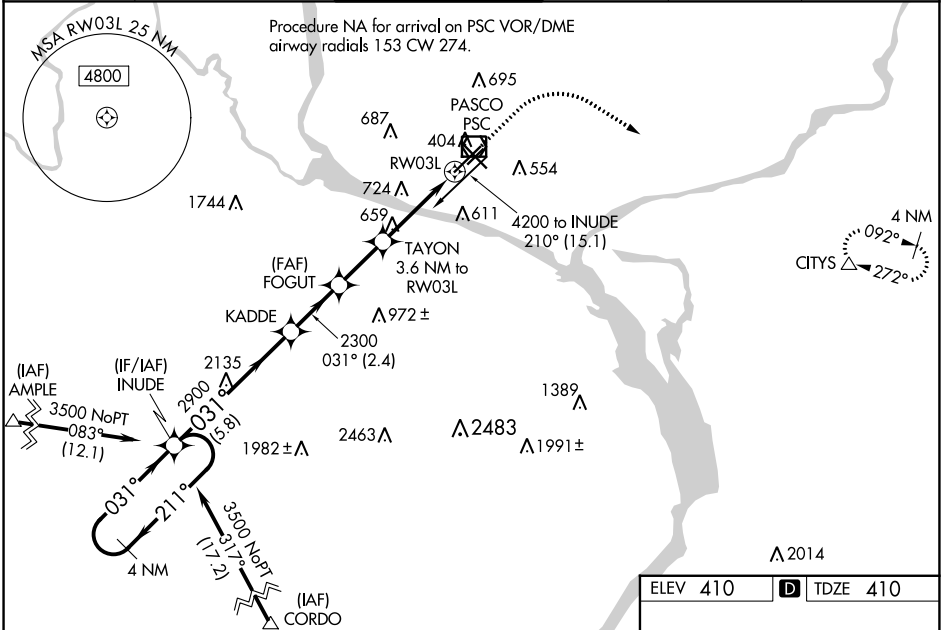
TRI-CITIES (PSC)

RNP APCH.

**⚠** Baro-VNAV NA when using Hermiston altimeter setting. For uncompensated Baro-VNAV systems, LNAV/VNAV NA below -14°C or above 54°C. VDP NA with Hermiston altimeter setting. When local altimeter setting not received, use Hermiston altimeter setting: increase all DA 95 feet and all MDA 100 feet. Increase LPV all Cats visibility ¼ mile, LNAV/VNAV all Cats visibilities ⅓ mile: increase LNAV Cats C and D visibility ⅓ mile. Circling Cat C and D visibility ¼ mile.

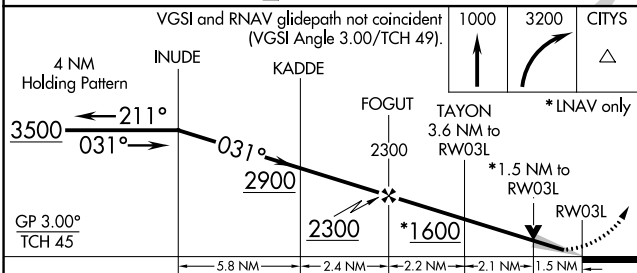
**MISSED APPROACH:**  
Climb to 1000 then climbing right turn to 3200 direct CITYS and hold.

ATIS <b>125.65</b>	SPOKANE APP CON* <b>128.75 377.2</b>	TRI-CITIES TOWER* <b>135.3 (CTAF) 0 323.3</b>	GND CON <b>121.8</b>	CLNC DEL <b>120.0</b>	UNICOM <b>122.95</b>
-----------------------	---	--	-------------------------	--------------------------	-------------------------



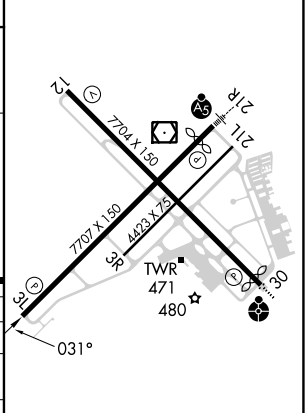
NW-1, 05 SEP 2024 to 03 OCT 2024

NW-1, 05 SEP 2024 to 03 OCT 2024



ELEV 410	<b>D</b> TDZE 410
----------	-------------------

CATEGORY	A	B	C	D
LPV DA	610-¾	200 (200-¾)		
LNAV/VNAV DA	708-1	298 (300-1)		
LNAV MDA	920-1 510 (600-1)	920-1 510 (600-1 ⅓)		
<b>C</b> CIRCLING	920-1 510 (600-1)	940-1 530 (600-1)	1040-1 630 (700-1 ⅓)	1100-2 690 (700-2 ¼)



REIL Rwy 3L and 12  
MIRL Rwy 12-30  
HIRL Rwy 3L-21R