

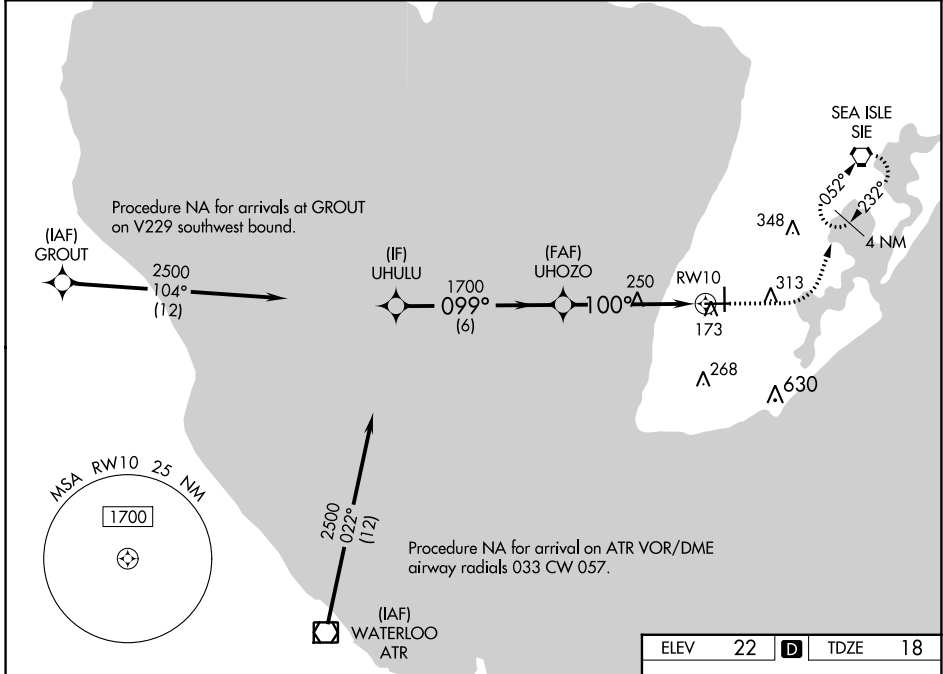
WAAS CH 93541 W10A	APP CRS 100°	Rwy Idg TDZE Apt Elev	5000 18 22
--	------------------------	-----------------------------	---------------------------------------

RNAV (GPS) RWY 10

CAPE MAY COUNTY (WWD)

RNP APCH.		MISSED APPROACH: Climb to 500 then climbing left turn to 2000 direct SIE VORTAC and hold.
<p>▼ For uncompensated Baro-VNAV systems, LNAV/VNAV NA below -15° C or above 54° C. Circling NA for Cats C and D northeast of Rwy 19 and 28. Rwy 10 helicopter visibility reduction below 3/4 SM NA. Circling Rwy 1 NA at night.</p>		

AWOS-3PT 118.275	ATLANTIC CITY APP CON 124.6 327.125	CLNC DEL 121.7	UNICOM 122.7 (CTAF) 0
----------------------------	---	--------------------------	---------------------------------



NE-2, 05 SEP 2024 to 03 OCT 2024

NE-2, 05 SEP 2024 to 03 OCT 2024

ELEV 22					D					TDZE 18				
<p>VGSI and RNAV glidepath not coincident (VGSI Angle 3.00/TCH 45).</p> <p>500 2000 SIE</p> <p>↑ ↘</p> <p>* LNAV only</p>														
CATEGORY	A		B		C		D							
LPV DA	285-7/8		267 (300-7/8)											
LNAV/VNAV DA	336-1		318 (400-1)											
LNAV MDA	500-1		482 (500-1)		500-1 3/8		482 (500-1 3/8)							
CIRCLING	500-1 478 (500-1)		620-1 598 (600-1)		620-1 1/2 598 (600-1 1/2)		980-3 958 (1000-3)		HIRL Rwy 1-19 0 MIRL Rwy 10-28 0					