

ALTUS, OKLAHOMA

# ILS or RNAV (GPS) Y RWY 36L

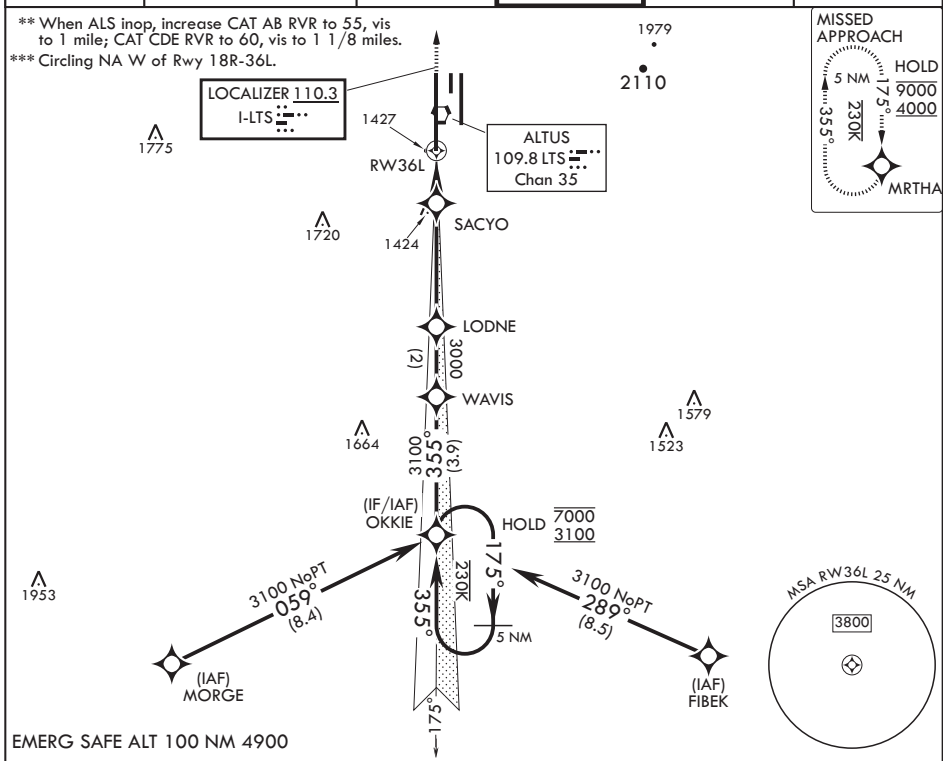
LOC I-LTS <b>110.3</b>	APCH CRS <b>355°</b>	Rwy Idg <b>13,440</b>	TDZE <b>1354</b>
		Arprt Elev <b>1382</b>	

AL-482 (USAF)

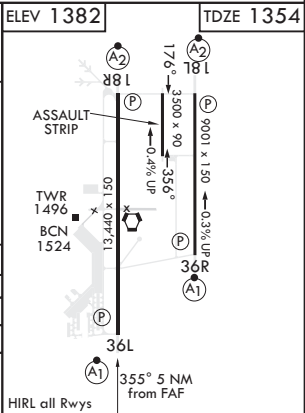
ALTUS AFB (KLTS)

RNP APCH for LNAV	ALSF-1	MISSED APPROACH: Climb to 4000 direct MRTHA and hold.
RNAV1-GPS required for ILS.		
<p>▼ * When ALS inop, increase CAT ABCDE RVR to 40, vis to 3/4 mile; RVR 18 authorized with use of FD or AP or HUD to DA.</p>		

ATIS* <b>109.8 273.5</b>	FORT WORTH CENTER <b>133.5 350.35</b>	APP CON <b>125.1 353.7</b>	TOWER* <b>119.65 254.4</b>	GND CON <b>121.85 275.8</b>	CLNC DEL <b>120.65 284.7</b>
-----------------------------	--	-------------------------------	-------------------------------	--------------------------------	---------------------------------



OKKIE (12)		WAVIS		LODNE		SACYO		VORTAC		
7000		3100		355°		3000		1800		
3100		355°		3100		3000		1800		
GS 3.00°		TCH 55								
				3.5 NM		1.5 NM		1 NM to RWY 36L		
CATEGORY	A	B	C	D	E					
S-ILS 36L*	1554/24		200		(200-½)					
LNAV MDA**	1740/24	386 (400-½)	1740/35	386	(400-¾)					
CIRCLING***	1780-1 398 (400-1)	1840-1 458 (500-1)	1880-1½ 498 (500-1½)	2080-2¼ 698 (700-2¼)	2180-2¾ 798 (800-2¾)					
						ELEV 1382		TDZE 1354		



ALTUS, OKLAHOMA

34°40'N - 99°16'W

ALTUS AFB (KLTS)

Amdt 3 14JUL22  
TERPS

# ILS or RNAV (GPS) Y RWY 36L

SC-1, 05 SEP 2024 to 03 OCT 2024

SC-1, 05 SEP 2024 to 03 OCT 2024