

ALTUS, OKLAHOMA

RNAV (GPS)-A

22195

APCH CRS 215°	Rwy Idg TDZE Arpt Elev	N/A N/A 1382
-------------------------	------------------------------	---

AL-482 (USAF)

ALTUS AFB (KLTS)

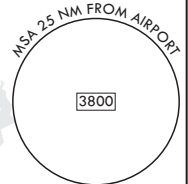
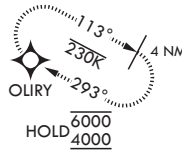
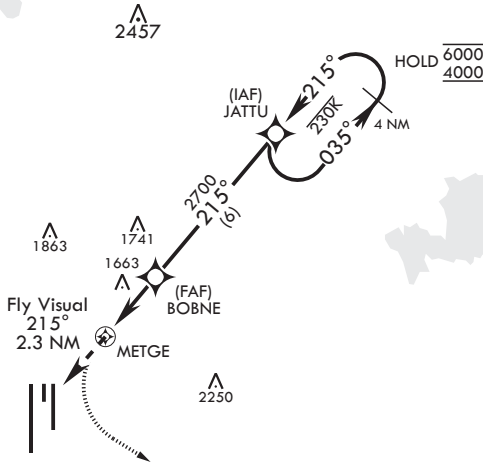
RNP APCH. DME/DME RNP 0.3 NA

MISSED APPROACH: Climb to 2200, then climbing left turn to 4000 direct OLIRY and hold.

ATC RADAR REQUIRED

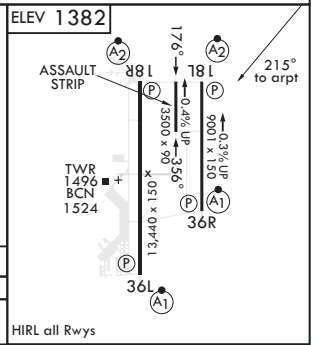
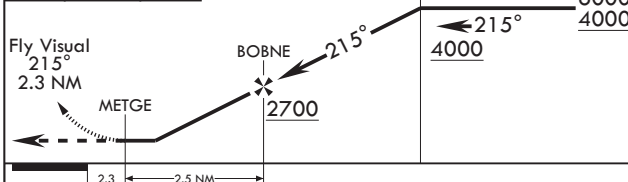
◀ Circling NA W of Rwy 18R-36L

ATIS ★ 109.8 273.5	FORT WORTH CENTER 133.5 350.35	APP CON 125.1 353.7	TOWER ★ 119.65 254.4	GND CON 121.85 275.8	CLNC DEL 120.65 284.7
------------------------------	--	-------------------------------	--------------------------------	--------------------------------	---------------------------------



FOR USE BY 97 AMW ACFT ONLY

EMERG SAFE ALT 100 NM 4900



2.3	2.5 NM				
CATEGORY	A	B	C	D	E
C CIRCLING	NA			2080-3 698 (700-3)	2180-3 798 (800-3)

HIRL all Rwys

ALTUS, OKLAHOMA

34°40'N - 99°16'W

ALTUS AFB (KLTS)

Amdt 4 14JUL22
TERPS

RNAV (GPS)-A

SC-1, 05 SEP 2024 to 03 OCT 2024

SC-1, 05 SEP 2024 to 03 OCT 2024