

(LIFRR2.LIFRR) 24109

AL-494 (FAA)

HOMESTEAD ARB (KHST)

# LIFRR TWO DEPARTURE (RNAV)

HOMESTEAD, FLORIDA

**TOP ALTITUDE:  
ASSIGNED BY ATC**

RNAV 1 - DME/DME/IRU or GPS.

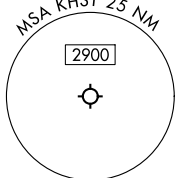
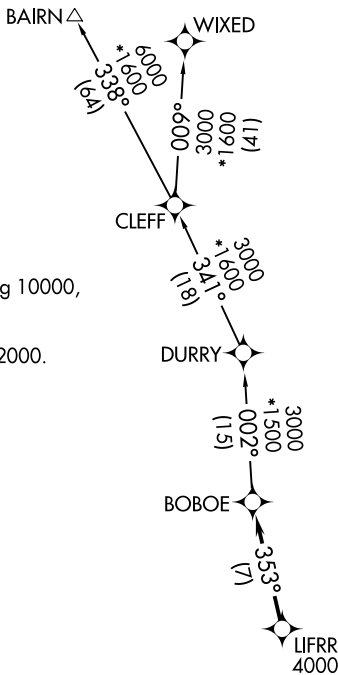
RADAR required for non-GPS  
equipped aircraft.

NOTE: Accelerate to 250K until leaving 10000,  
if unable, advise ATC.

NOTE: Jet aircraft only.

NOTE: For aircraft filed at or below 12000.

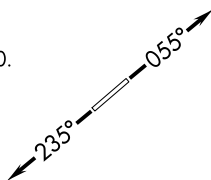
MIAMI DEP CON	125.5 354.1
ATIS*	
132.275 269.9	
CLNC DEL	
121.75 275.8	
GND CON	
121.75 275.8	
HOMESTEAD TOWER	
133.45 279.55	



### TAKEOFF MINIMUMS

Rwy 6: Standard with minimum climb of 500'/NM to 1800.

Rwy 24: Standard with minimum climb of 500'/NM to 2200.



NOTE: Chart not to scale.



### DEPARTURE ROUTE DESCRIPTION

TAKEOFF RUNWAY 6: Climb on heading 055° or as assigned by ATC, thence. . .  
TAKEOFF RUNWAY 24: Climb on heading 235° or as assigned by ATC, thence. . .

. . . for RADAR vector to cross LIFRR at or above 4000, then on track 353° to BOBOE, then on assigned transition, maintain ATC assigned altitude, expect clearance to filed altitude within 10 minutes after departure.

BAIRN TRANSITION (LIFRR2.BAIRN)  
WIXED TRANSITION (LIFRR2.WIXED)

# LIFRR TWO DEPARTURE (RNAV)

(LIFRR2.LIFRR) 21MAR24

HOMESTEAD, FLORIDA  
HOMESTEAD ARB (KHST)

SE-3, 05 SEP 2024 to 03 OCT 2024

SE-3, 05 SEP 2024 to 03 OCT 2024