

TACAN Z RWY 6

TACAN HST Chan 19	APCH CRS 056°	Rwy ldg 11,201 TDZE Arpt Elev 5 6
-----------------------------	-------------------------	--

AL-494 [USAF]

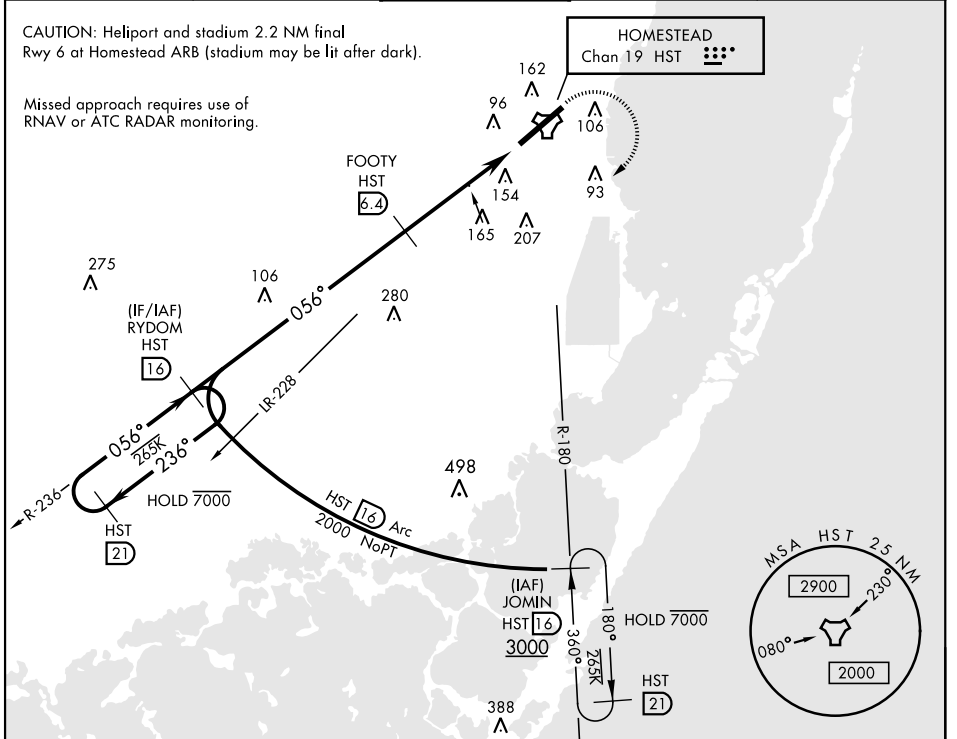
HOMESTEAD ARB (KHST)

▼ * When ALS inop, increase CAT AB RVR to 55, vis to 1 mile; CAT CDE vis to 1½ miles.
 ** Circling NA NW of Rwy 6-24.

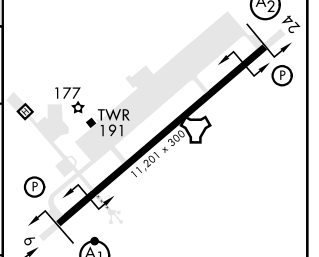
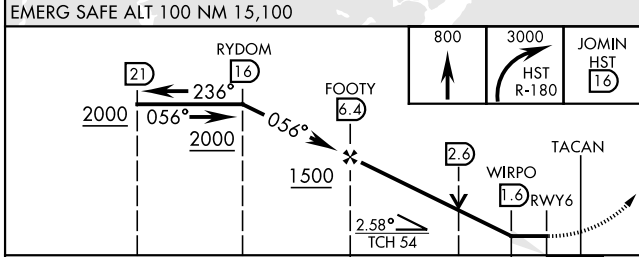
 ALSF-1

 MISSED APPROACH: Climb to 800 then climbing right turn to 3000 intercept HST TACAN R-180 to JOMIN and hold.

ATIS ★ 132.275 269.9	APP CON 123.8 257.675	TOWER 133.45 279.55	GND CON 121.75 275.8	CLNC DEL 121.75 275.8
--------------------------------	---------------------------------	-------------------------------	--------------------------------	---------------------------------



EMERG SAFE ALT 100 NM 15,100	ELEV 6	TDZE 5
------------------------------	--------	--------



CATEGORY	A	B	C	D	E
S-6 *	460/24	455 (500-½)	460/45	455 (500-¾)	
** CIRCLING	460-1 454 (500-1)	500-1 494 (500-1)	520-1½ 514 (600-1½)	580-2 574 (600-2)	780-2¾ 774 (800-2¾)

HIRL Rwy 6-24

TACAN Z RWY 6

SE-3, 05 SEP 2024 to 03 OCT 2024

SE-3, 05 SEP 2024 to 03 OCT 2024