

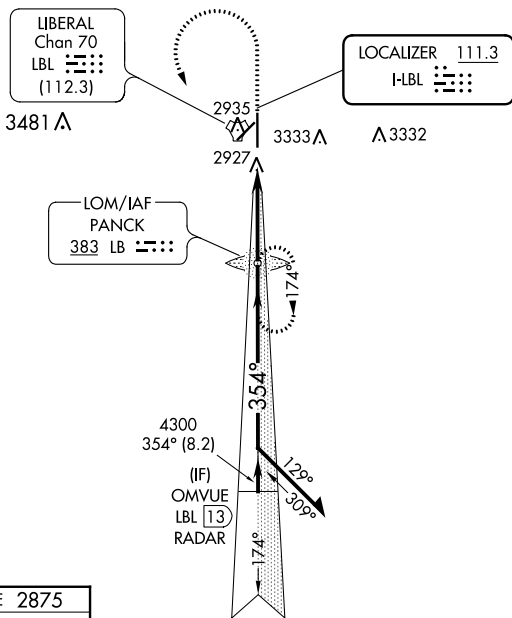
LOC I-LBL <b>111.3</b>	APP CRS <b>354°</b>	Rwy Idg TDZE Apt Elev	<b>7105</b> <b>2875</b> <b>2886</b>
---------------------------	------------------------	-----------------------------	---

# ILS or LOC RWY 35

LIBERAL MID-AMERICA RGNL (L.B.L)

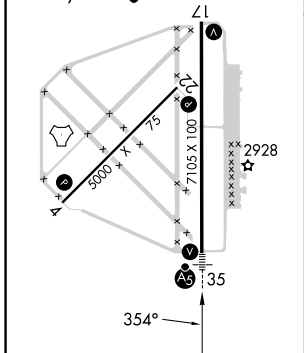
ADF or RADAR required.	MALSR 	MISSED APPROACH: Climb to 4000 then climbing left turn to 4600 direct PANCK LOM and hold.
Circling NA east of Rwy 17-35. For inop ALS, increase S-LOC 35 Cats C/D visibility to ½ SM.		

AWOS-3PT <b>118.375</b>	KANSAS CITY CENTER <b>134.0 257.625</b>	UNICOM <b>122.8 (CTAF)</b>
----------------------------	--	-------------------------------

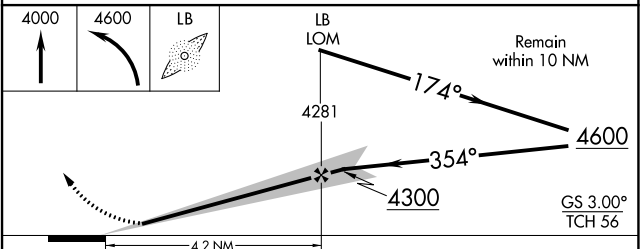


ELEV 2886	<b>D</b>	TDZE 2875
-----------	----------	-----------

REIL Rwys 4, 17 and 22  
 MIRL Rwy 4-22  
 HIRL Rwy 17-35



FAF to MAP 4.2 NM					
Knots	60	90	120	150	180
Min:Sec	4:12	2:48	2:06	1:41	1:24



CATEGORY	A	B	C	D
S-ILS 35	3075-½		200 (200-½)	
S-LOC 35	3180-½		305 (300-½)	
<b>C</b> CIRCLING	3280-1 394 (400-1)	3400-1 514 (600-1)	3400-1½ 514 (600-1½)	3460-2 574 (600-2)

NC-2, 05 SEP 2024 to 03 OCT 2024

NC-2, 05 SEP 2024 to 03 OCT 2024