

WAAS CH <b>78205</b> <b>W17A</b>	APP CRS <b>174°</b>	Rwy Idg TDZE Apt Elev	<b>7105</b> <b>2878</b> <b>2885</b>
--	------------------------	-----------------------------	---

# RNAV (GPS) RWY 17

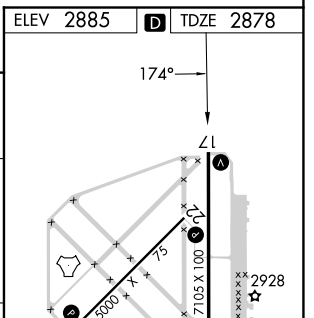
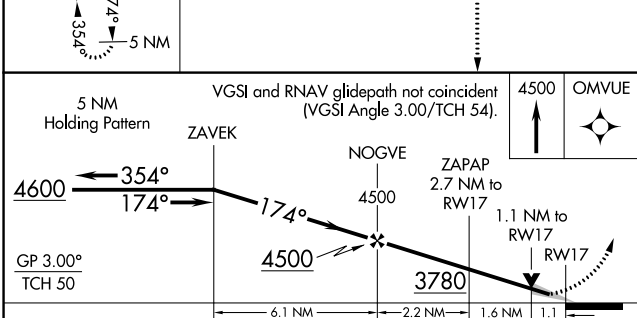
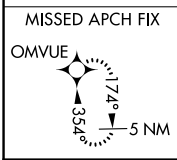
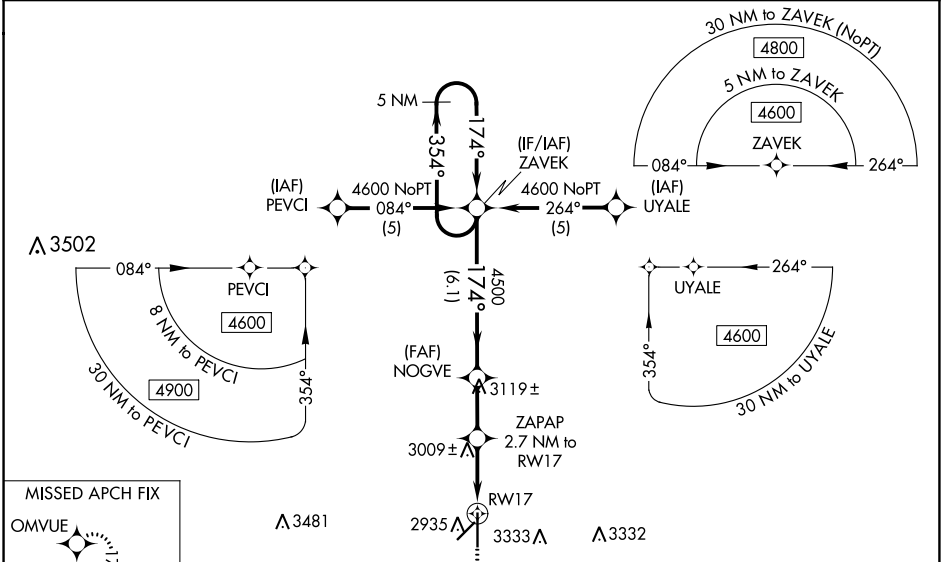
LIBERAL MID-AMERICA RGNL (L.B.L)

RNP APCH - GPS.

**⚠** For uncompensated Baro-VNAV systems, LNAV/VNAV NA below -20°C or above 54°C. Circling NA east of Rwy 17-35. When local altimeter setting not received, use GUY altimeter setting and increase LPV DA 3240 feet; increase LNAV/VNAV DA to 3432 feet and all visibilities ¼ SM. Increase all MDAs 120 feet and LNAV visibility Cat C/D ¼ SM, and Circling visibility Cat C/D ¼ SM. Baro-VNAV and VDP NA when using GUY altimeter setting.

MISSED APPROACH: Climb to 4500 direct OMVUE and hold.

AWOS-3PT <b>118.375</b>	KANSAS CITY CENTER <b>134.0 257.625</b>	UNICOM <b>122.8 (CTAF) 0</b>
----------------------------	--	---------------------------------



CATEGORY	A	B	C	D
LPV DA		3128-1	250 (300-1)	
LNAV/VNAV DA		3320-1 <sup>3</sup> / <sub>8</sub>	442 (500-1 <sup>3</sup> / <sub>8</sub> )	
LNAV MDA	3260-1	382 (400-1)	3260-1 <sup>1</sup> / <sub>8</sub>	382 (400-1 <sup>1</sup> / <sub>8</sub> )
<b>C</b> CIRCLING	3320-1 435 (500-1)	3360-1 475 (500-1)	3400-1 <sup>1</sup> / <sub>2</sub> 515 (600-1 <sup>1</sup> / <sub>2</sub> )	3640-2 <sup>1</sup> / <sub>2</sub> 755 (800-2 <sup>1</sup> / <sub>2</sub> )

ELEV 2885 TDZE 2878

REIL Rwy 4, 17 and 22 0

MIRL Rwy 4-22 0

HIRL Rwy 17-35 0

NC-2, 05 SEP 2024 to 03 OCT 2024

NC-2, 05 SEP 2024 to 03 OCT 2024