

WAAS CH 56523 W12A	APP CRS 118°	Rwy Idg TDZE Apt Elev	4400 3294 3298
--	------------------------	-----------------------------	---

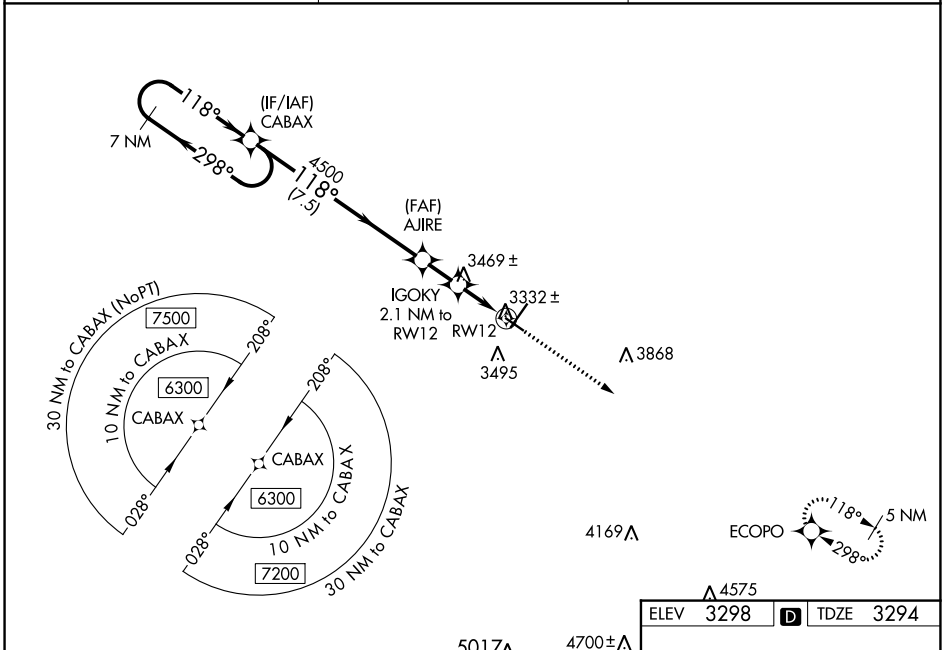
RNAV (GPS) RWY 12

CHADRON MUNI (CDR)

⚠ Baro-VNAV NA when using Pine Ridge altimeter setting. For uncompensated Baro-VNAV systems, LNAV/VNAV NA below -21°C (-5°F) or above 54°C (130°F). DME/DME RNP-0.3 NA. When local altimeter setting not received, use Pine Ridge altimeter setting and increase all DA 70 feet and all MDA 80 feet; increase LPV all Cats visibility 1/8 mile, LNAV/VNAV all Cats visibility 1/4 mile, and Circling Cat C visibility 1/4 mile.

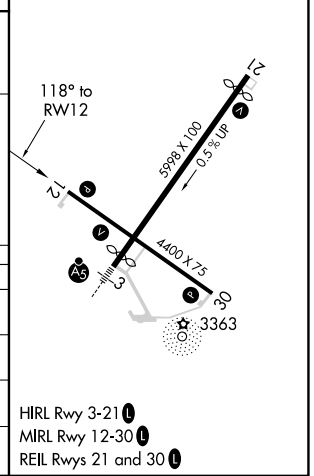
MISSED APPROACH:
Climb to 5900 direct ECOPO and hold.

ASOS 118.05	DENVER CENTER 127.95 338.2	UNICOM 122.8 (CTAF) 0
-----------------------	--------------------------------------	---------------------------------



7 NM Holding Pattern at 6300. VGSI and RNAV glidepath not coincident (VGSI Angle 3.00/TCH 29). GP 3.00° TCH 42. *LNAV only. RWY 12.

CATEGORY	A	B	C	D
LPV DA	3544-1		250 (300-1)	NA
LNAV/VNAV DA	3719-1½		425 (500-1½)	NA
LNAV MDA	3720-1	426 (500-1)	3720-1¼ 426 (500-1¼)	NA
CIRCLING	3820-1 522 (600-1)	3920-1 622 (700-1)	3920-1¾ 622 (700-1¾)	NA



NC-2, 05 SEP 2024 to 03 OCT 2024

NC-2, 05 SEP 2024 to 03 OCT 2024