

LOC/DME I-LEI 108.5 Chan 22	APP CRS 234°	Rwy Idg 7500 TDZE 435 Apt Elev 435
---	------------------------	---

ILS or LOC RWY 23L

RALEIGH-DURHAM INTL (RDU)

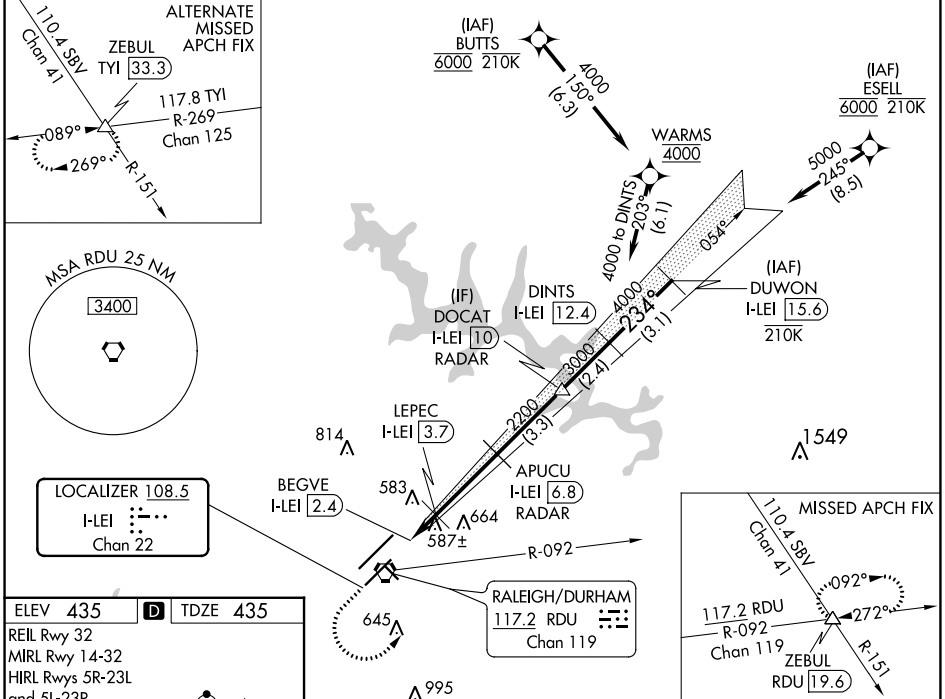
RNAV 1-DME/DME/IRU or GPS or RADAR required for procedure entry.
DME required for LOC only.



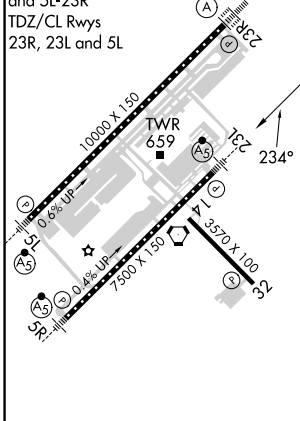
MISSED APPROACH: Climb to 1100 then climbing left turn to 2600 on heading 050° and RDU VORTAC R-092 to ZEBUL INT and hold.

⚠ Simultaneous approach authorized. For inop ALS, increase S-ILS 23L all Cats visibility to RVR 5500. Localizer unusable for coupled approaches below 1100 or within 2 NM of threshold.

D-ATIS 123.8	RALEIGH APP CON 127.675 307.9	(EAST) RALEIGH TOWER (WEST) 127.45 257.8 119.3 257.8 Rwys 5R-23L and 14-32 Rwy 5L-23R	(EAST) GND CON (WEST) 121.9 348.6 121.7 348.6 Rwys 5R-23L and 14-32 Rwy 5L-23R	CLNC DEL 120.1	CPDLC
------------------------	---	--	---	--------------------------	-------



ELEV 435	D	TDZE 435
REIL Rwy 32		
MIRL Rwy 14-32		
HIRL Rwys 5R-23L and 5L-23R		
TDZ/CL Rwys 23R, 23L and 5L		



1100	2600	RDU R-092	ZEBUL	Localizer unusable from 1 NM from threshold.	DUWON I-LEI 15.6
*LOC only.					
BEGVE I-LEI 2.4	LEPEC I-LEI 3.7	2200	APUCU I-LEI 6.8 RADAR	DOCAT I-LEI 10 RADAR	DINTS I-LEI 12.4
3000					
2200					
4000					
5000					
GS 3.00° TCH 56					
1 NM — 1.3 NM — 3.1 NM — 3.3 NM — 2.4 NM — 3.1 NM					
CATEGORY	A		B		C
S-ILS 23L			806/35		371 (400- ⁵ / ₈)
S-LOC 23L			840/40		405 (500- ³ / ₄)
C CIRCLING	960-1 ¹ / ₄		525 (600-1 ¹ / ₄)		1020-1 ¹ / ₂ 585 (600-1 ¹ / ₂)
					1180-2 ¹ / ₂ 745 (800-2 ¹ / ₂)