

WAAS CH 70309 W04A	APP CRS 043°	Rwy Idg TDZE Apt Elev	7927 592 598
--	------------------------	-----------------------------	---

RNAV (GPS) RWY 4

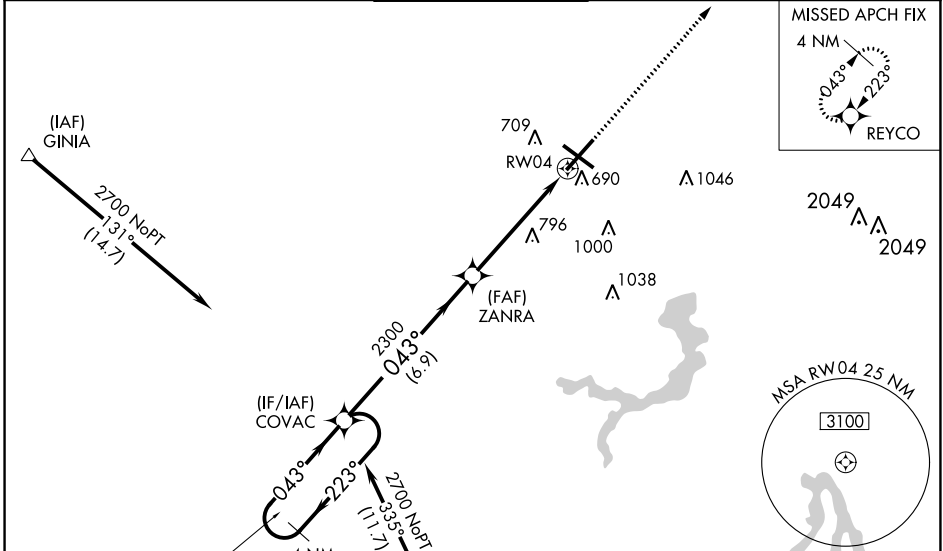
ABRAHAM LINCOLN CAPITAL (SPI)

RNP APCH - GPS.

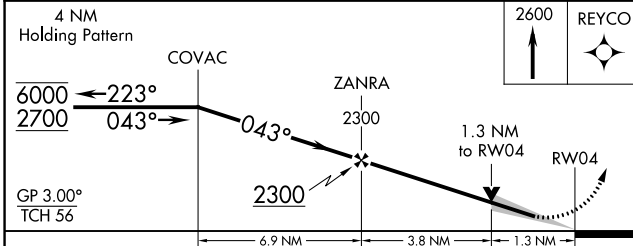
⚠ For uncompensated Baro-VNAV systems, LNAV/VNAV NA below -16°C or above 54°C. Baro-VNAV and VDP NA when using Lincoln altimeter setting. For inop ALS, increase LPV all Cats visibility to RVR 4500 and LNAV Cats C/D visibility to 1 3/8 SM. When local altimeter ASR setting not received, use Lincoln altimeter setting and increase LPV DA to 912 feet; increase LNAV/VNAV DA to 989 feet and all visibilities to RVR 3500; increase all MDAs 60 feet and LNAV visibility Cat C/D to RVR 5500 and Circling visibility Cat C/D 1/4 SM. For inop ALS when using Lincoln altimeter setting, increase LPV all Cats visibility to RVR 4500.

MALSR MISSED APPROACH: Climb to 2600 direct REYCO and hold.

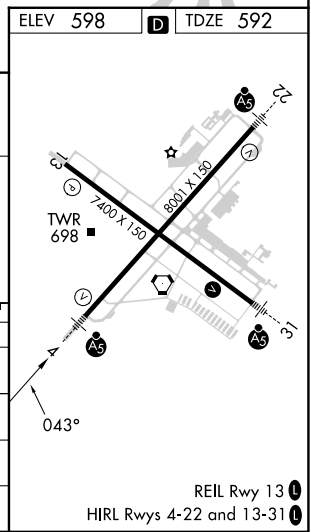
ATIS 127.65 270.1	SAINT LOUIS APP CON * 126.15 323.0	SPRINGFIELD TOWER * 121.3 (CTAF) 0 257.8	GND CON 121.9 348.6	CLNC DEL 121.7	UNICOM 122.95
-----------------------------	--	--	-------------------------------	--------------------------	-------------------------



ELEV 598	D TDZE 592
----------	-------------------



CATEGORY	A	B	C	D
LPV DA		854/24	262 (300-1/2)	
LNAV/VNAV DA		931/26	339 (400-1/2)	
LNAV MDA	1060/24	468 (500-1/2)	1060/50	468 (500-1)
C CIRCLING	1060-1 462 (500-1)	1100-1 502 (600-1)	1360-2 1/4 762 (800-2 1/4)	1380-2 1/2 782 (800-2 1/2)



EC-3, 05 SEP 2024 to 03 OCT 2024

EC-3, 05 SEP 2024 to 03 OCT 2024