

WAAS CH <b>69216</b> <b>W30A</b>	APP CRS <b>300°</b>	Rwy Idg TDZE Apt Elev	<b>6751</b> <b>12</b> <b>15</b>
--	------------------------	-----------------------------	---------------------------------------

# RNAV (GPS) RWY 30

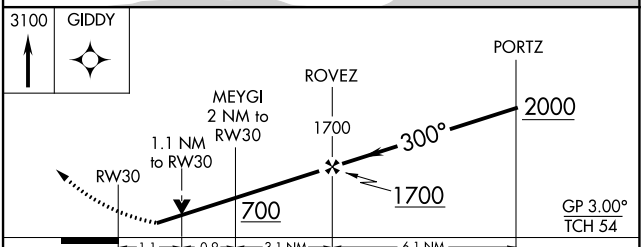
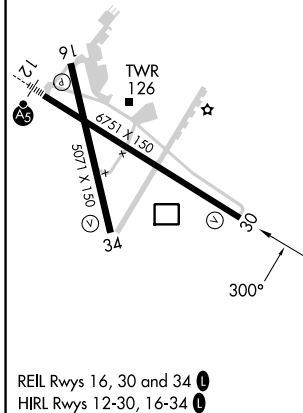
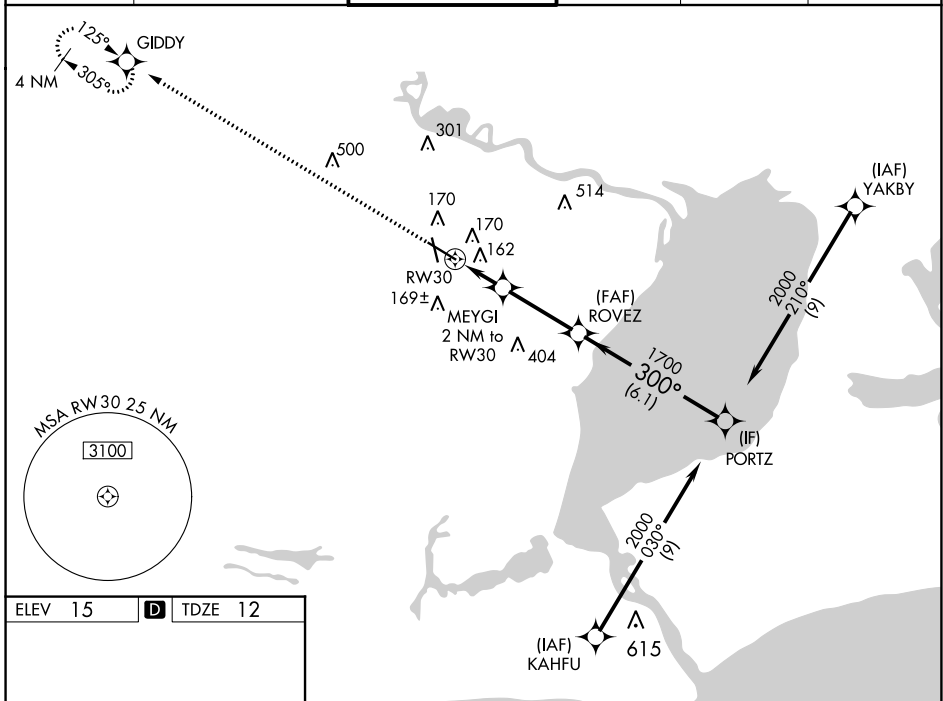
JACK BROOKS RGNL (BPT)

RNP APCH - GPS.

⚠ For uncompensated Baro-VNAV systems, LNAV/VNAV NA below -4°C or above 54°C. Rwy 30 helicopter visibility reduction below 3/4 SM NA. Baro-VNAV and VDP NA when using Orange County altimeter setting. When local altimeter setting not received, use Orange County altimeter setting: increase LPV DA to 294 feet and all visibilities 1/2 SM. Increase LNAV/VNAV DA to 355 feet and all visibilities 1/2 SM. Increase all MDAs 40 feet and LNAV visibility Cat C/D/E 1/4 SM.

MISSED APPROACH: Climb to 3100 direct GIDDY and hold, continue climb-in-hold to 3100.

ATIS <b>126.3</b>	HOUSTON APP CON <b>121.3 377.1</b>	BEAUMONT TOWER* <b>119.5 (CTAF)</b>	GND CON <b>124.85</b>	CLNC DEL <b>118.3</b>	UNICOM <b>122.95</b>
----------------------	---------------------------------------	--	--------------------------	--------------------------	-------------------------



CATEGORY	A	B	C	D	E
LPV DA		262-3/4	250 (300-3/4)		
LNAV/VNAV DA		323-7/8	311 (400-7/8)		
LNAV MDA	420-1	408 (500-1)	420-1 1/8	408 (500-1 1/8)	

SC-5, 05 SEP 2024 to 03 OCT 2024

SC-5, 05 SEP 2024 to 03 OCT 2024