

WAAS CH <b>77542</b> <b>W34A</b>	APP CRS <b>339°</b>	Rwy Idg TDZE Apt Elev	<b>7003</b> <b>3916</b> <b>3942</b>
--	------------------------	-----------------------------	---

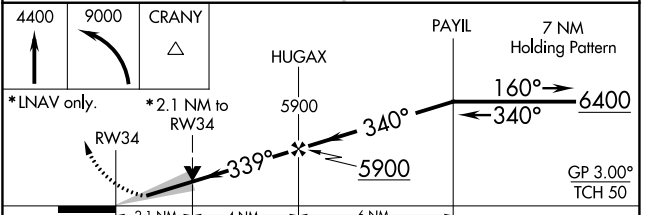
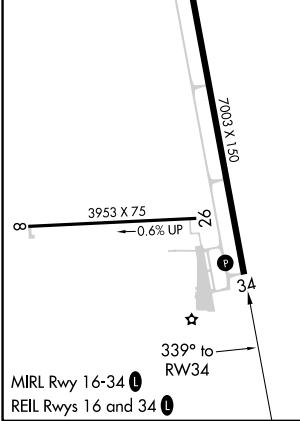
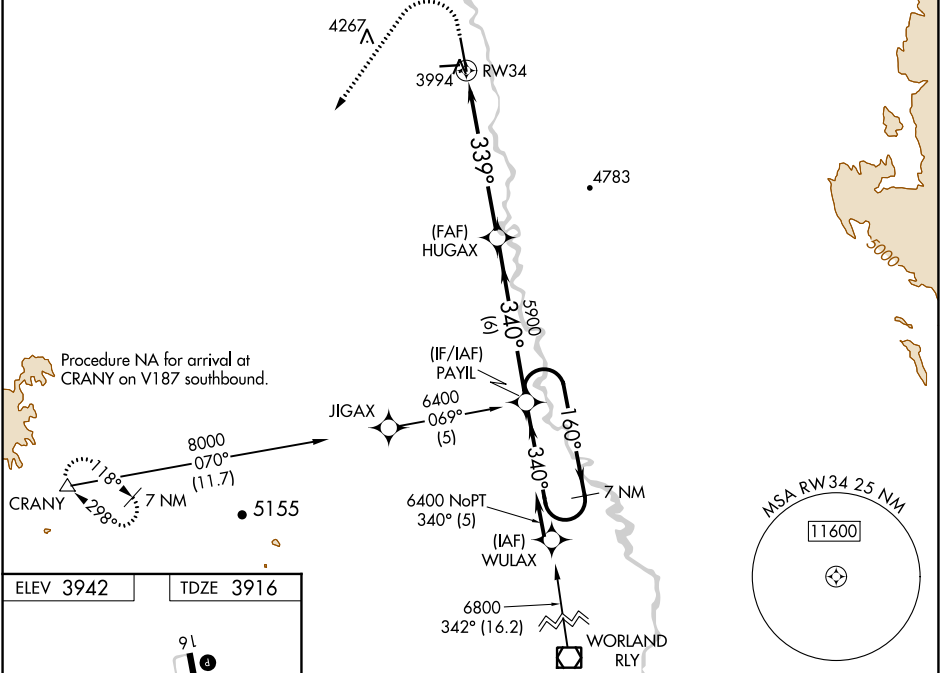
# RNAV (GPS) RWY 34

SOUTH BIG HORN COUNTY (GEY)

**⚠** Baro-VNAV NA when using Cowley/Lovell/Byron altimeter setting. For uncompensated Baro-VNAV systems, LNAV/VNAV NA below -26°C (-14°F) or above 51°C (124°F). DME/DME RNP-0.3 NA. When local altimeter setting not received, use Cowley/Lovell/Byron altimeter setting and increase LPV DA to 4253 feet and LNAV/VNAV DA to 4327 feet. Increase LPV and LNAV/VNAV visibility all Cats 3/8 SM. Increase all MDAs 100 feet and LNAV visibility Cat B 1/4 SM, Cats C/D 1/2 SM and Circling Cat B 1/4 SM. VDP NA with Cowley/Lovell/Byron altimeter setting.

**⚠** MISSED APPROACH: Climb to 4400 then climbing left turn to 9000 direct CRANY and hold, continue climb-in-hold 9000.

ASOS <b>135.325</b>	SALT LAKE CENTER <b>127.75 351.9</b>	CTAF <b>122.9</b>
------------------------	---	----------------------



CATEGORY	A	B	C	D
LPV DA	4166-3/4		250 (300-3/4)	
LNAV/VNAV DA	4240-1		324 (300-1)	
LNAV MDA	4640-1 724 (700-1)		4640-2 724 (700-2)	
<b>C</b> CIRCLING	4640-1 698 (700-1)	4700-1/4 758 (800-1/4)	5320-3 1378 (1400-3)	5460-3 1518 (1600-3)

NW-1, 05 SEP 2024 to 03 OCT 2024

NW-1, 05 SEP 2024 to 03 OCT 2024