

# HI-TACAN Z RWY 31

TACAN OFF Chan <b>54</b>	APCH CRS <b>316°</b>	Rwy ldg <b>10,612</b> TDZE <b>991</b> Arprt Elev <b>1048</b>
-----------------------------	-------------------------	--

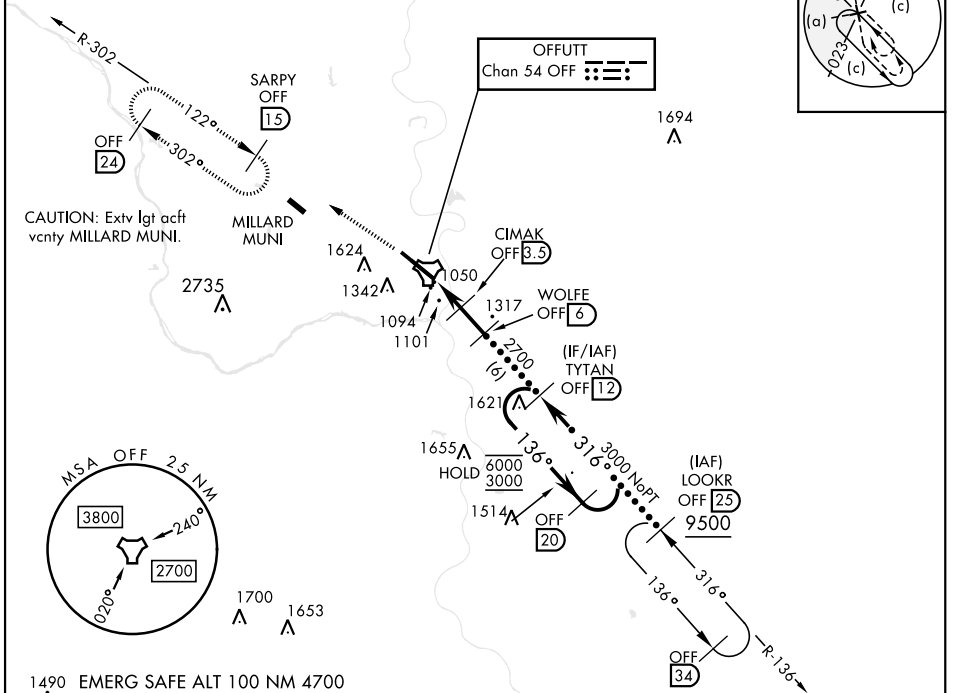
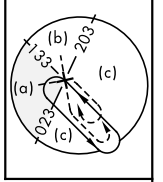
[USAF]

OFFUTT AFB (KOFF)

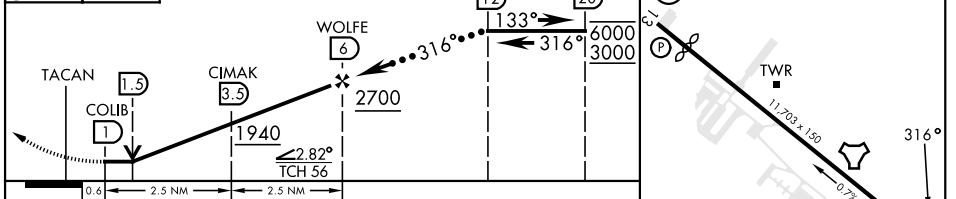
<p>▼ *When ALS inop, increase CAT CDE RVR to 55, vis to 1 mile. **Circling not authorized N of Rwy 13-31.</p>	<p>ALSF-1 </p>	<p>MISSED APPROACH: Climb to 3000 via OFF TACAN R-302 to SARPY and hold.</p>
---	--------------------	--

<p>ATIS <b>126.025 273.5</b></p>	<p>OMAHA APP CON <b>124.5 263.0</b> (E) <b>120.1 354.05</b> (W)</p>	<p>TOWER <b>123.7 279.625</b></p>	<p>GND CON <b>121.7 289.4</b></p>
--------------------------------------	---	---------------------------------------	---------------------------------------

CAUTION: When circling to Rwy 13 at night, operational VGSI required, remain on or above VGSI glidepath until threshold.



3000 OFF R-302	SARPY OFF <b>15</b>	ELEV 1048	TDZE 991
----------------	---------------------	-----------	----------



CATEGORY	C	D	E
S-31*	1360/40	368	(400-34)
CIRCLING**	1660-134 612 (700-134)	1940-3	892 (900-3)

HIRL Rwy 13-31  
Rwy 13-31 ALS nstd

# HI-TACAN Z RWY 31

NC-2, 05 SEP 2024 TO 03 OCT 2024

NC-2, 05 SEP 2024 TO 03 OCT 2024