

OMAHA, NEBRASKA

RNAV (GPS) RWY 31

WAAS CH 91357 W31A	APCH CRS 307°	Rwy ldg TDZE Arprt Elev	10,612 991 1048
--------------------------	------------------	----------------------------	-----------------------

(USAF)

OFFUTT AFB (KOFF)

RNP APCH-GPS

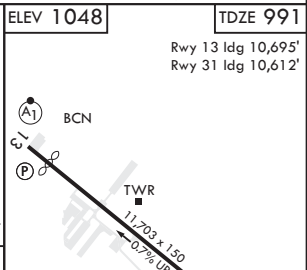
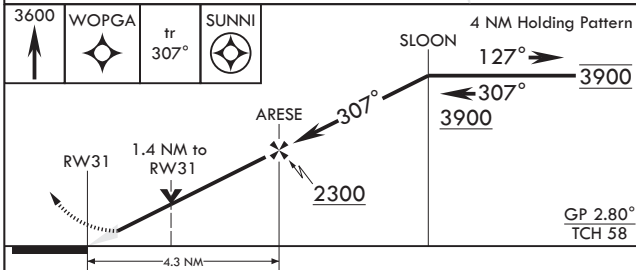
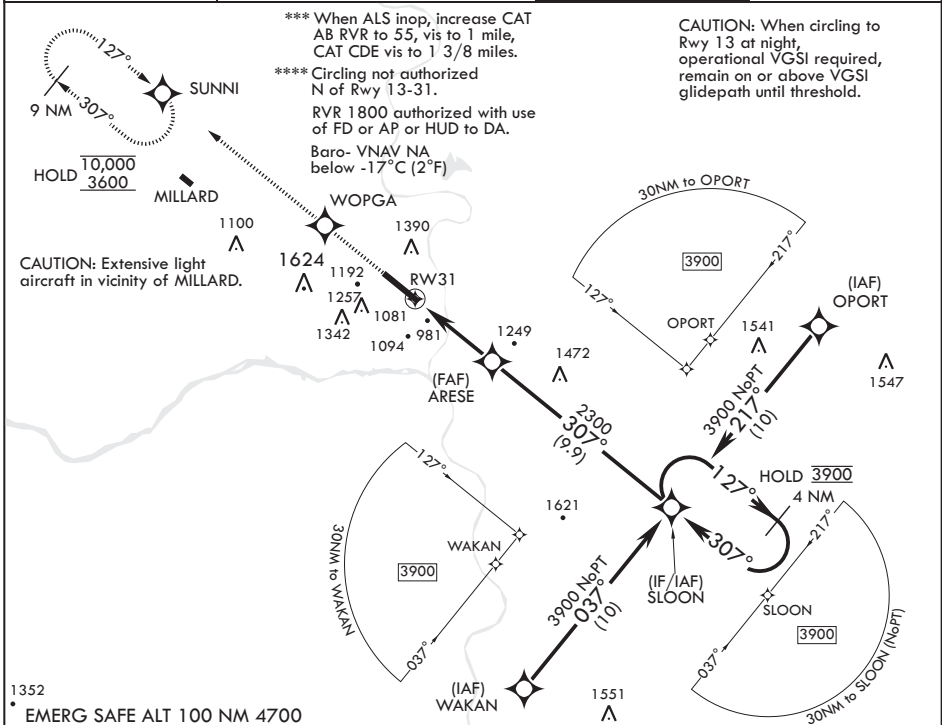
▼ * When ALS inop, increase RVR to 40 and vis to 3/4 mile.
 ** When ALS inop, increase RVR to 60 and vis to 1 1/8 miles.

ALSF-1



MISSED APPROACH: Climb to 3600 direct WOPGA then track 307° to SUNNI and hold.

ATIS 126.025 273.5	OMAHA APP CON/DEP CON 120.1 354.05 W 124.5 263.0 E	TOWER 123.7 279.625	GND CON 121.7 289.4
-----------------------	--	------------------------	------------------------



CATEGORY	A	B	C	D	E
LPV DA*	1192/24		200	(200-½)	
LNAV/VNAV DA**	1382/35		390	(400-¾)	
LNAV MDA***	1440/24	448 (400-½)	1440/45	448	(400-¾)
☐ CIRCLING****	1500-1 452 (500-1)	1560-1 512 (600-1)	1660-1¼ 612 (700-1¼)	1940-3 892 (900-3)	

HIRL all Rwys
Rwy 13-31 ALS nstd

OMAHA, NEBRASKA

41°07'N - 95°55'W

OFFUTT AFB (KOFF)

Amdt 1 22FEB24

RNAV (GPS) RWY 31

NC-2, 05 SEP 2024 to 03 OCT 2024

NC-2, 05 SEP 2024 to 03 OCT 2024