

VORTAC DRK <b>114.1</b> Chan <b>88</b>	APP CRS <b>125°</b>	Rwy Idg <b>4258</b> TDZE <b>5027</b> Apt Elev <b>5045</b>
--	------------------------	---

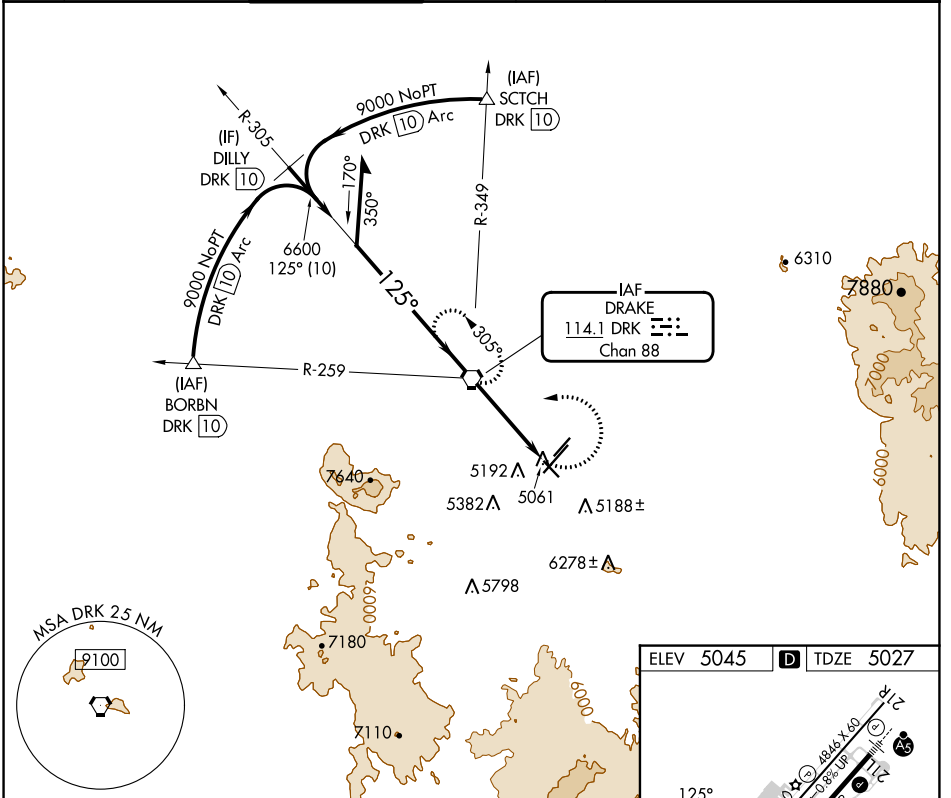
# VOR RWY 12

PRESCOTT RGNL-ERNEST A LOVE FIELD (P.R.C)

**⚠** Rwy 12 helicopter visibility reduction below 3/4 SM NA.  
Circling Rwy 3L, 30 NA at night.

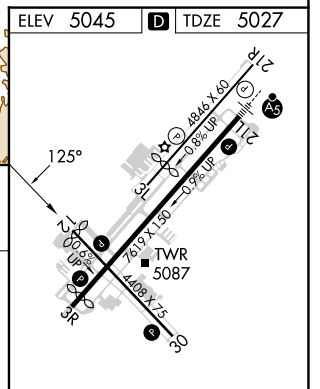
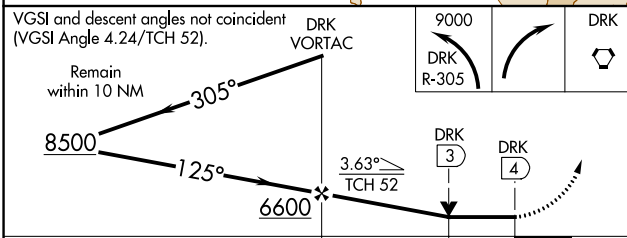
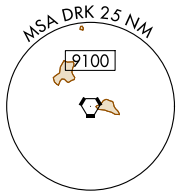
MISSED APPROACH: Climbing left turn to 9000 via DRK VORTAC R-305 then right turn direct DRK VORTAC and hold, continue climb-in-hold to 9000.

ATIS <b>127.2</b>	PHOENIX APP CON <b>133.575 281.55</b>	PRESCOTT TOWER * <b>125.3</b> (CTAF) <b>257.9</b>	GND CON <b>121.7</b>	CLNC DEL <b>119.25</b>	<b>128.75</b> (12-30) <b>125.3</b> (CTAF) (3R-21L)	UNICOM <b>122.95</b>
----------------------	--	--	-------------------------	---------------------------	---	-------------------------



SW-4, 05 SEP 2024 to 03 OCT 2024

SW-4, 05 SEP 2024 to 03 OCT 2024



CATEGORY	A	B	C	D
S-12	5460-1	433 (500-1)	5460-1 1/4 433 (500-1 1/4)	NA
<b>C</b> CIRCLING	5520-1 475 (500-1)	5760-1 715 (800-1)	6080-3 1035 (1100-3)	NA

MIRL Rwy 3L-21R and 3R-21L  
MIRL Rwy 12-30  
REIL Rwy 3R, 12, and 30

FAF to MAP 4 NM

Knots	60	90	120	150	180
Min:Sec	4:00	2:40	2:00	1:36	1:20